

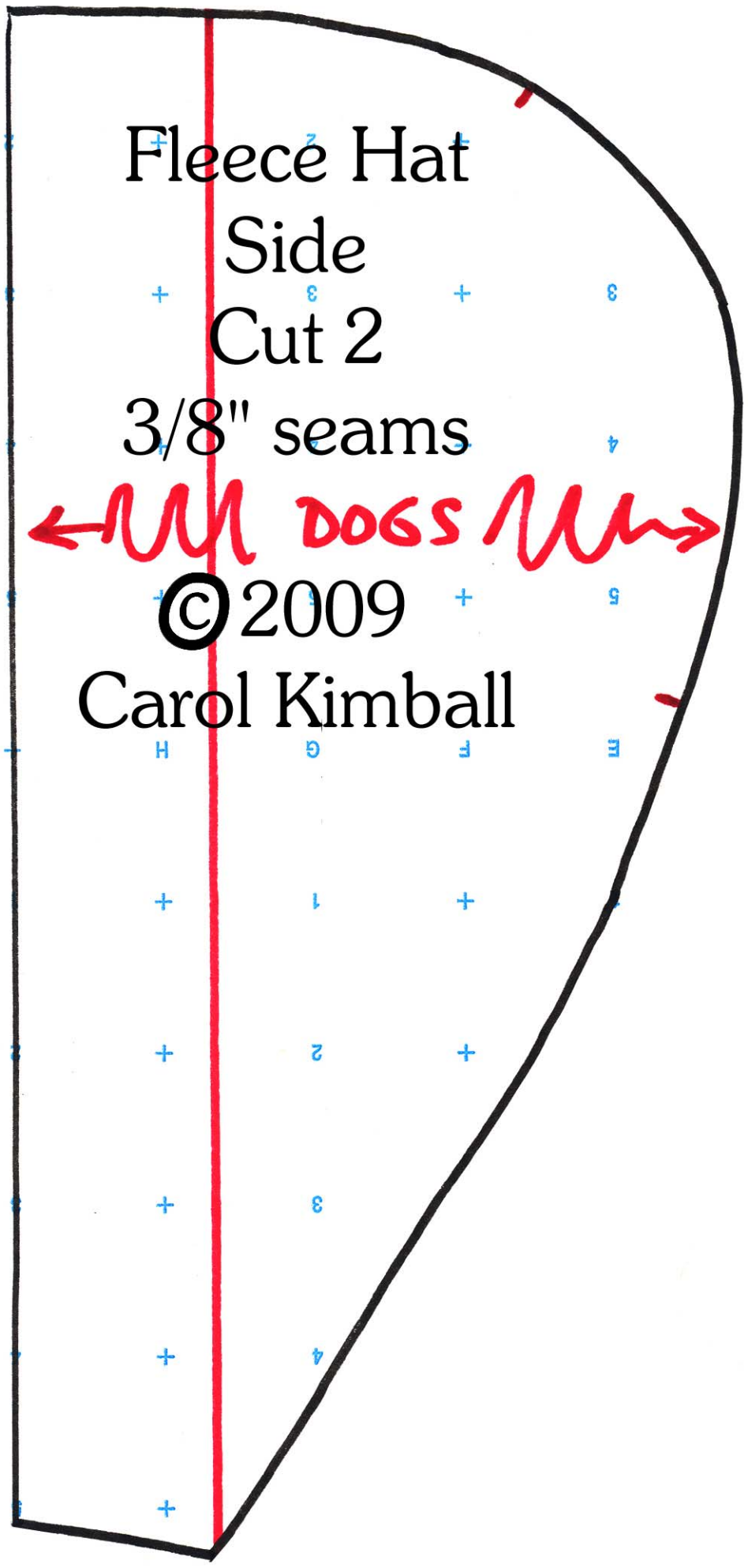
Fleece Hat  
Side  
Cut 2

3/8" seams

← M DOGS M →

© 2009

Carol Kimball

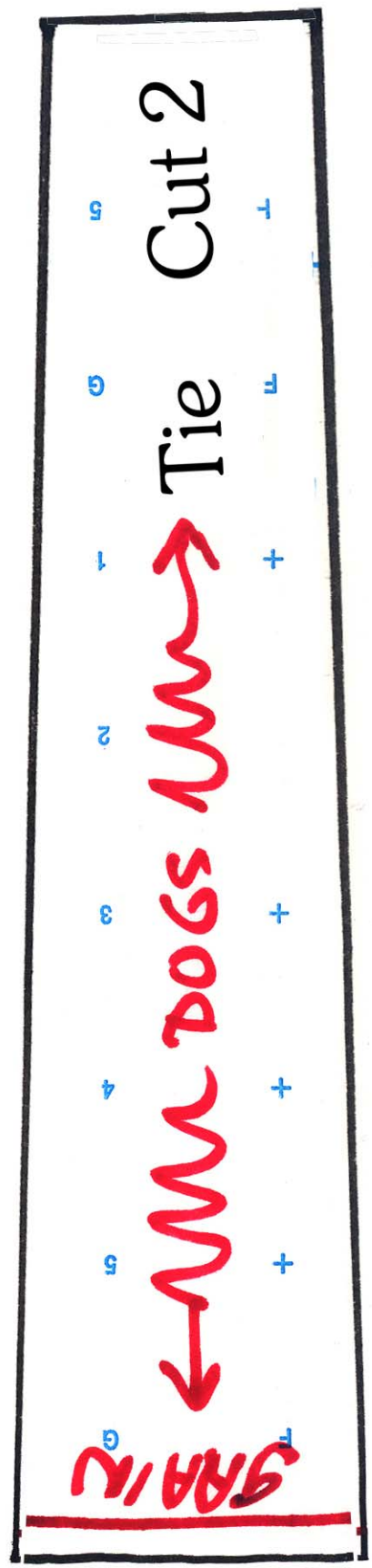


Cut 2

Tie

→ M DOGS M →

GRAIN



©2009 Carol Kimball

3/8" seams

Cut 1

Top (1 of 2)

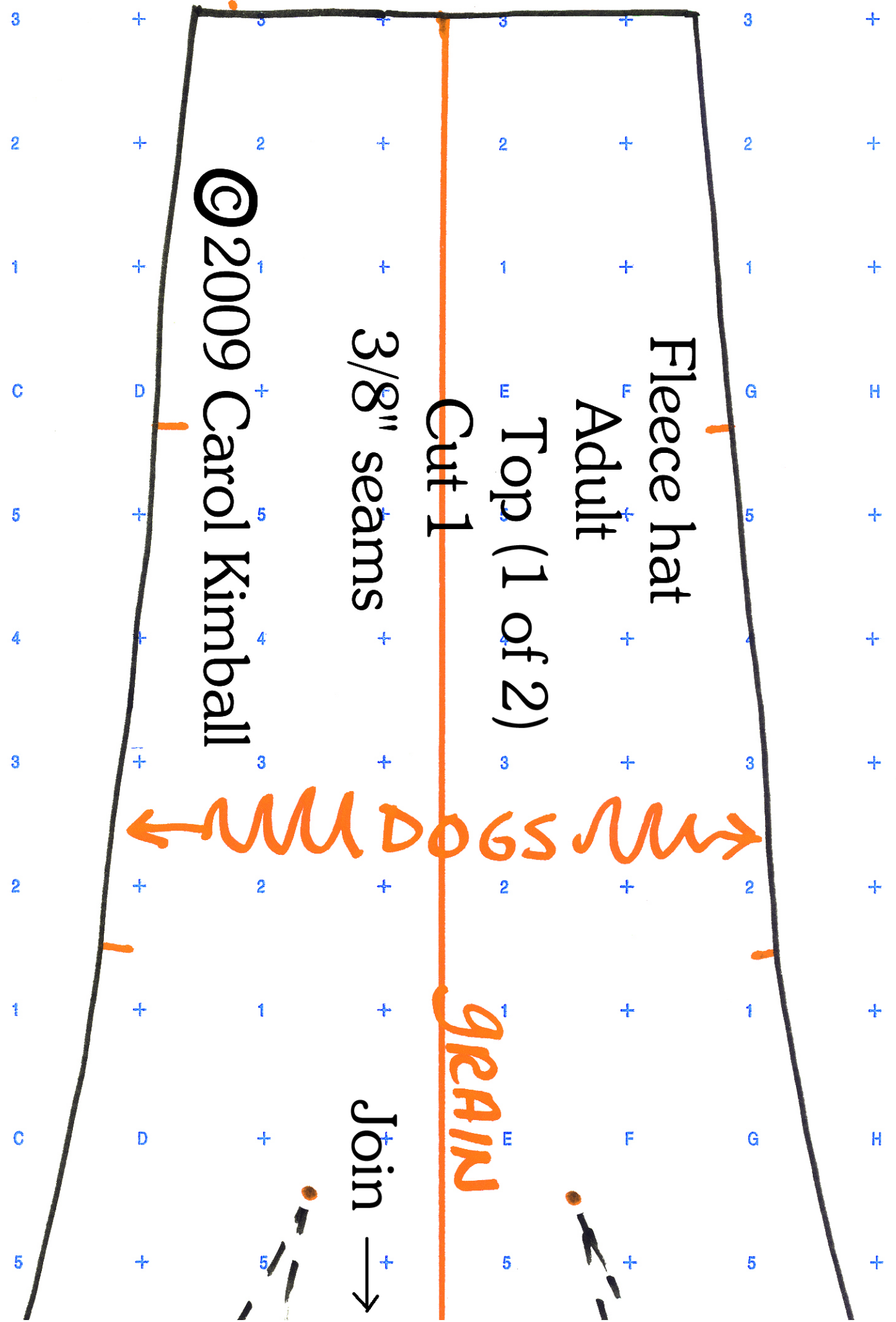
Adult

Fleece hat

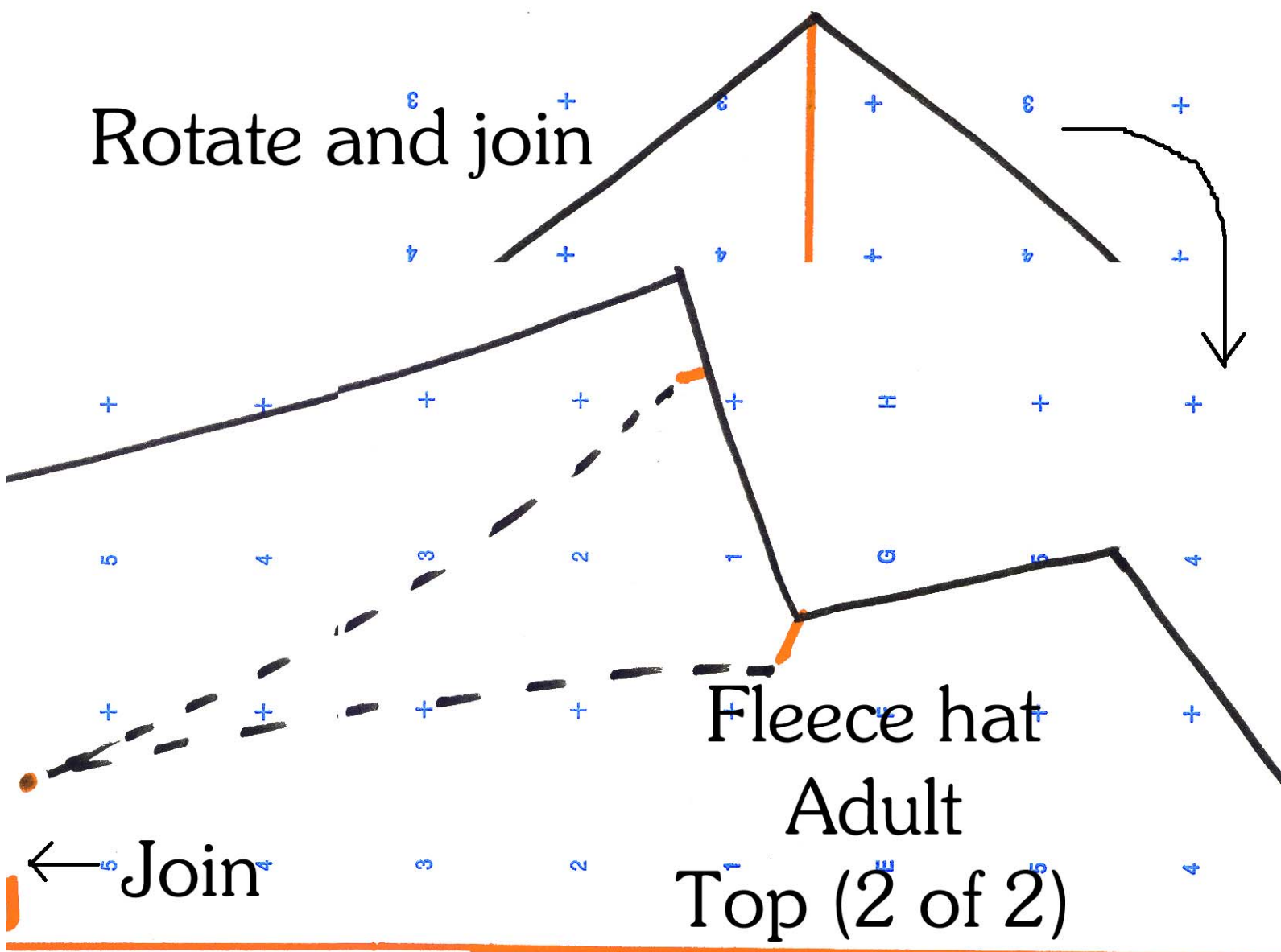
MUDOGS M

GRAIN

Join



Rotate and join



Fleece hat  
Adult  
Top (2 of 2)

Join

Cut 1

3/8" seams

©2009 Carol Kimball

