

Wrap-Front Cape

**Front**

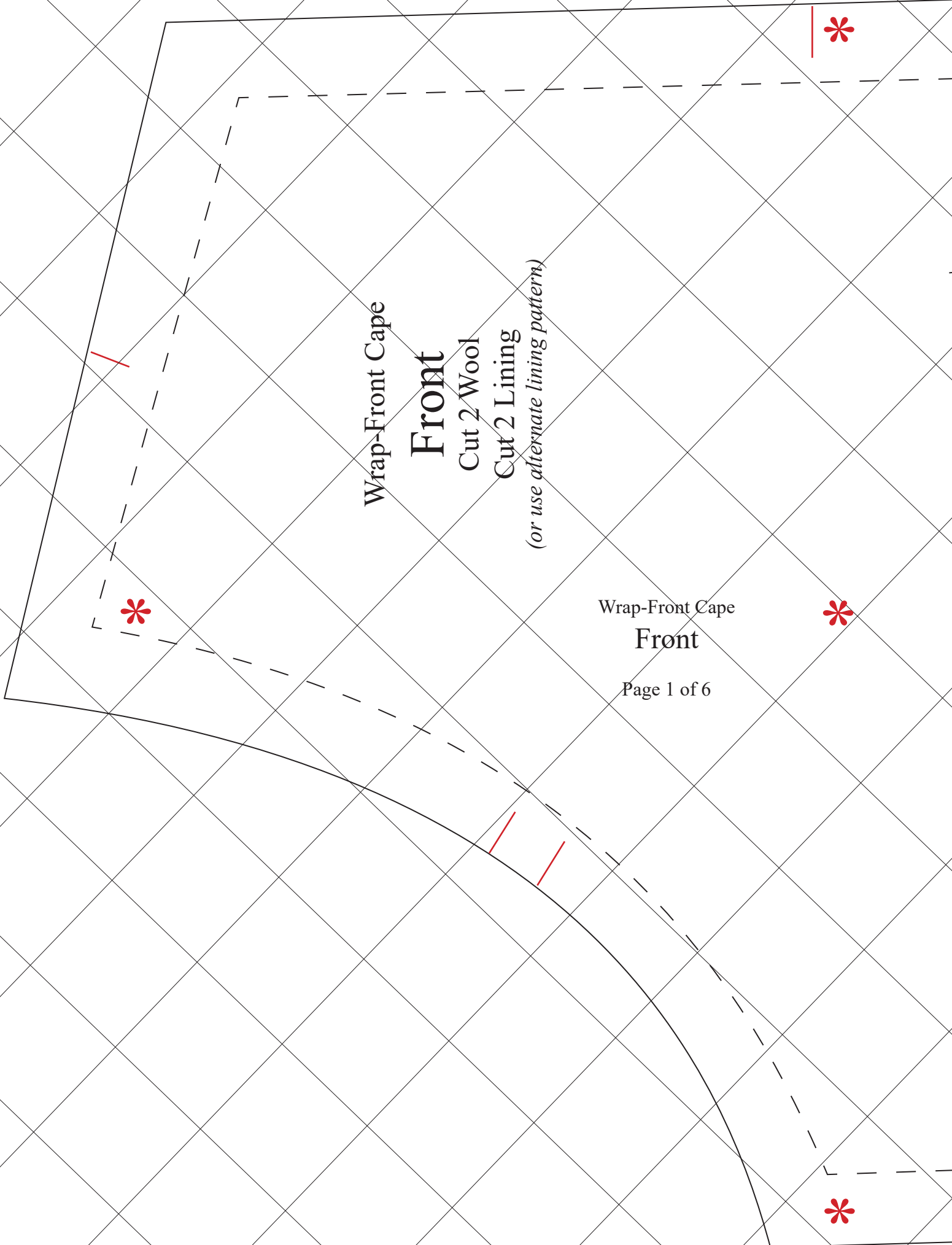
Cut 2 Wool

Cut 2 Lining

*(or use alternate lining pattern)*

Wrap-Front Cape  
**Front**

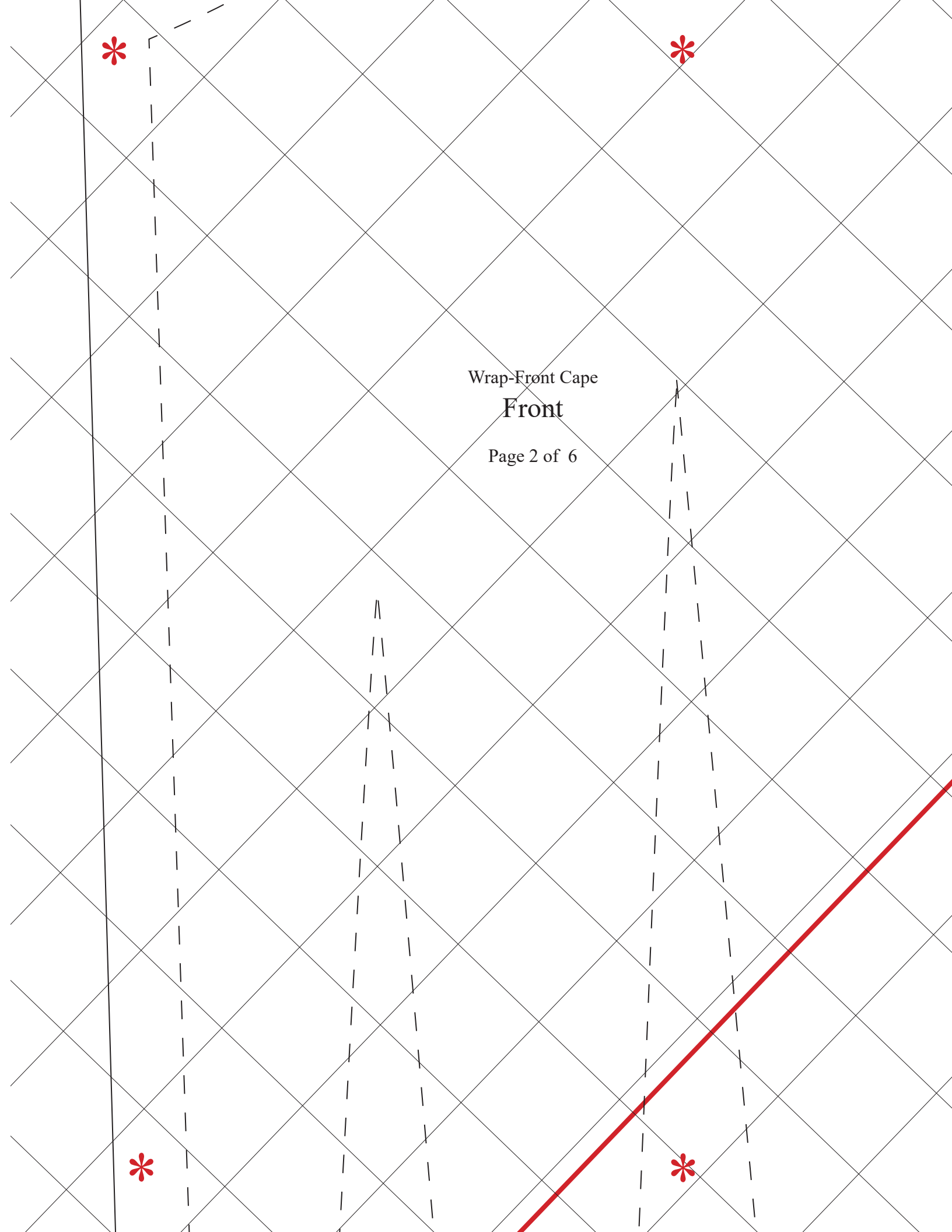
Page 1 of 6





Wrap-Front Cape  
Front

Page 2 of 6





Wrap-Front Cape  
**Front**

Page 3 of 6

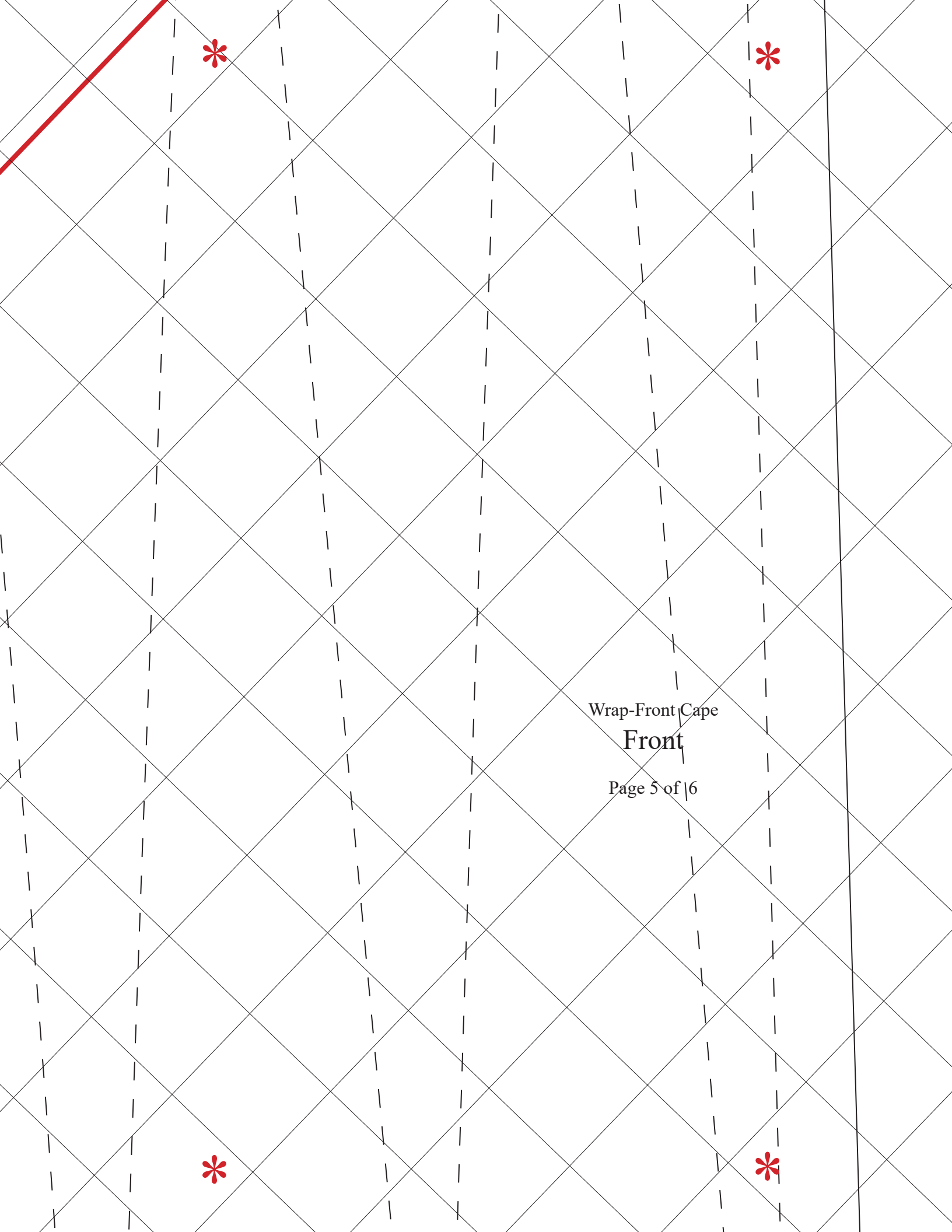




Wrap-Front Cape

Front

Page 4 of 6



Wrap-Front Cape  
Front

Page 5 of 6



Wrap-Front Cape

Front

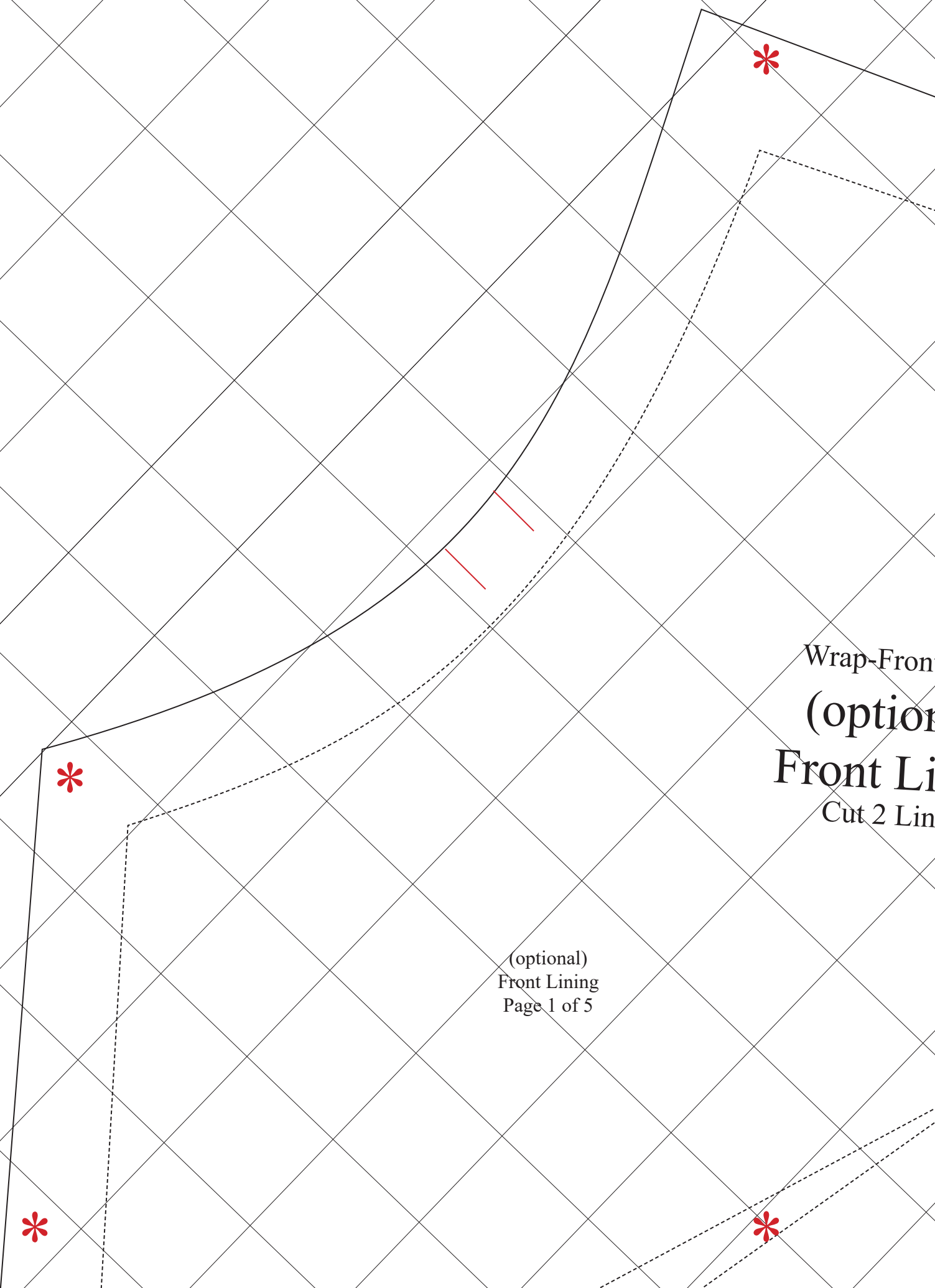
Page 6 of 6

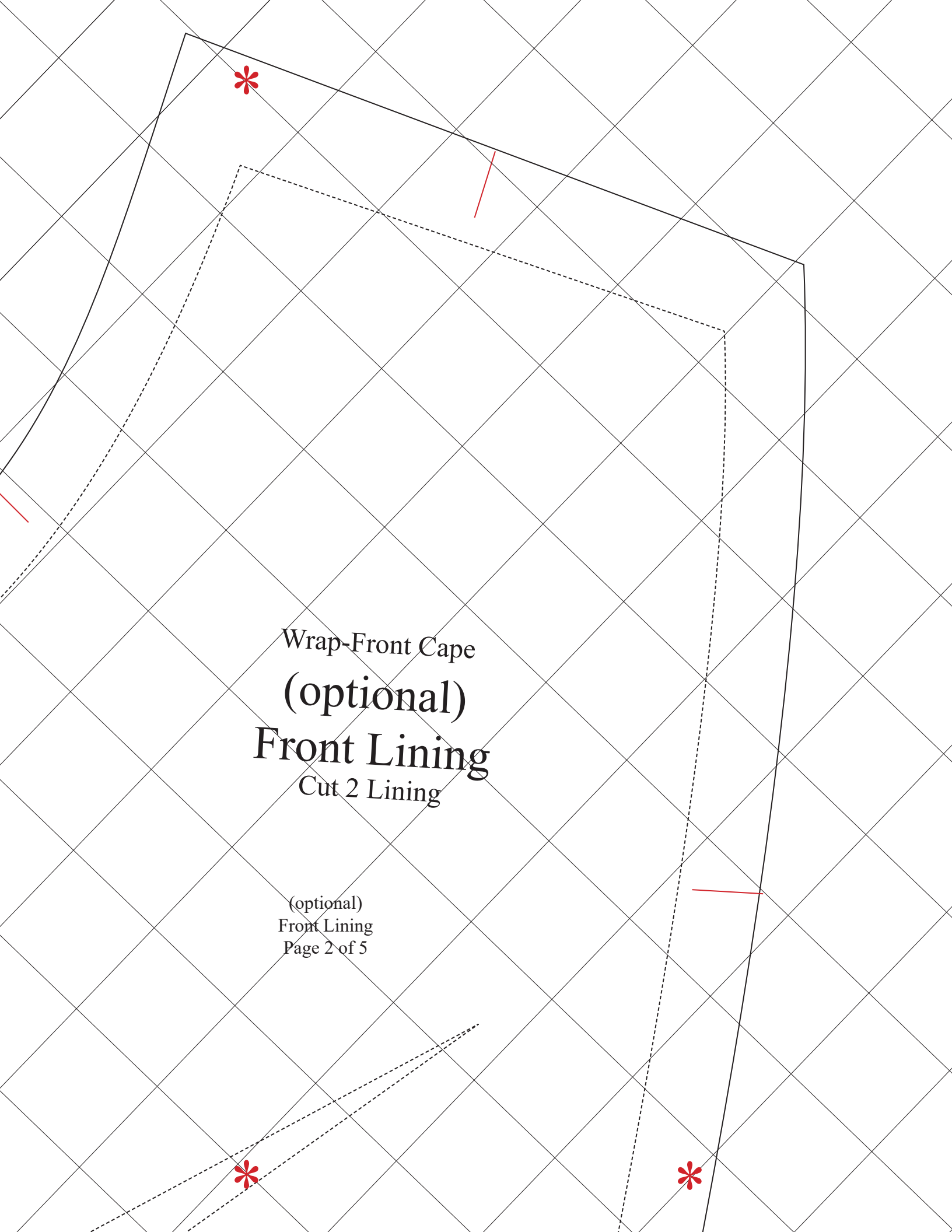
(two sections - cut on dotted line and join)



Wrap-Fron  
(option  
Front Li  
Cut 2 Lin

(optional)  
Front Lining  
Page 1 of 5





Wrap-Front Cape  
(optional)  
**Front Lining**  
Cut 2 Lining

(optional)  
Front Lining  
Page 2 of 5



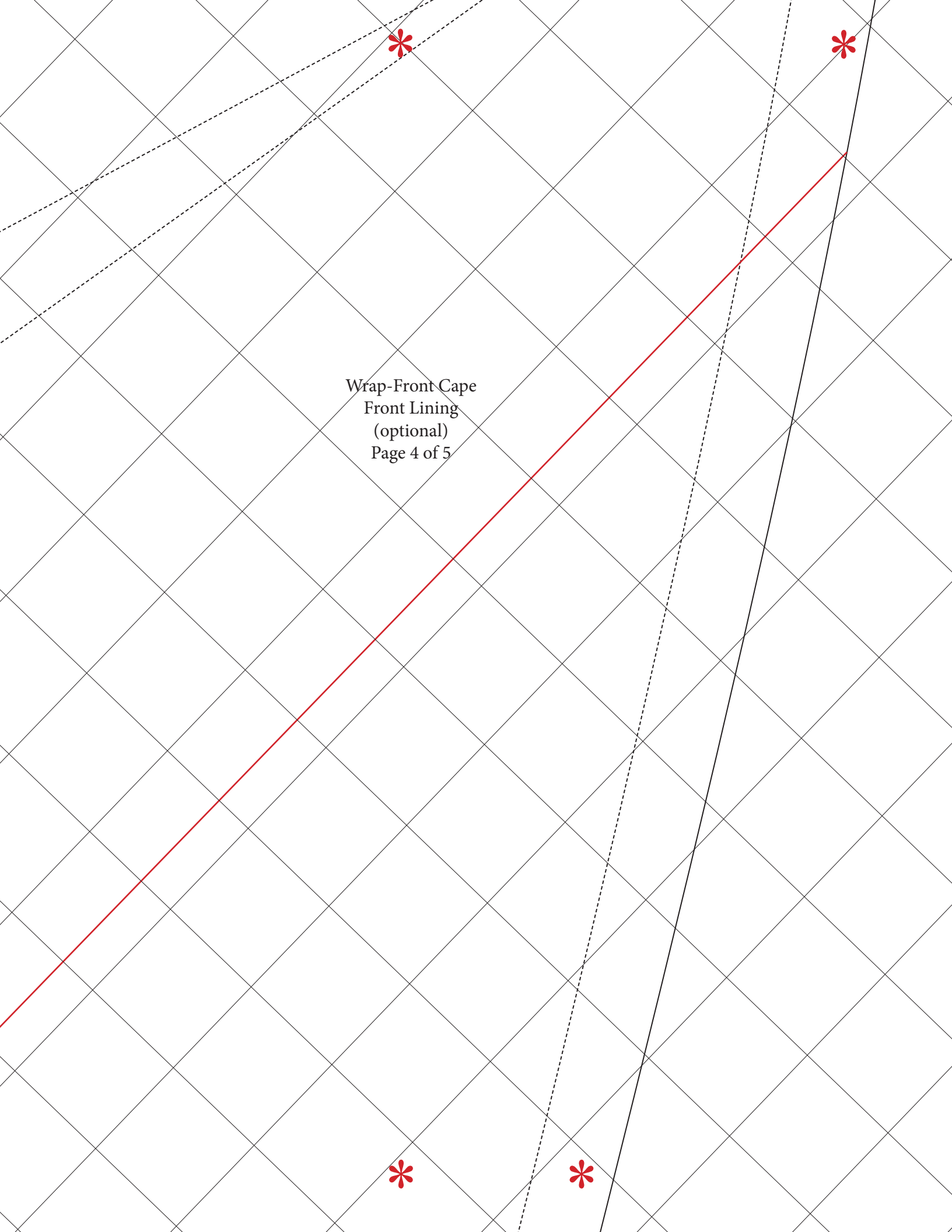


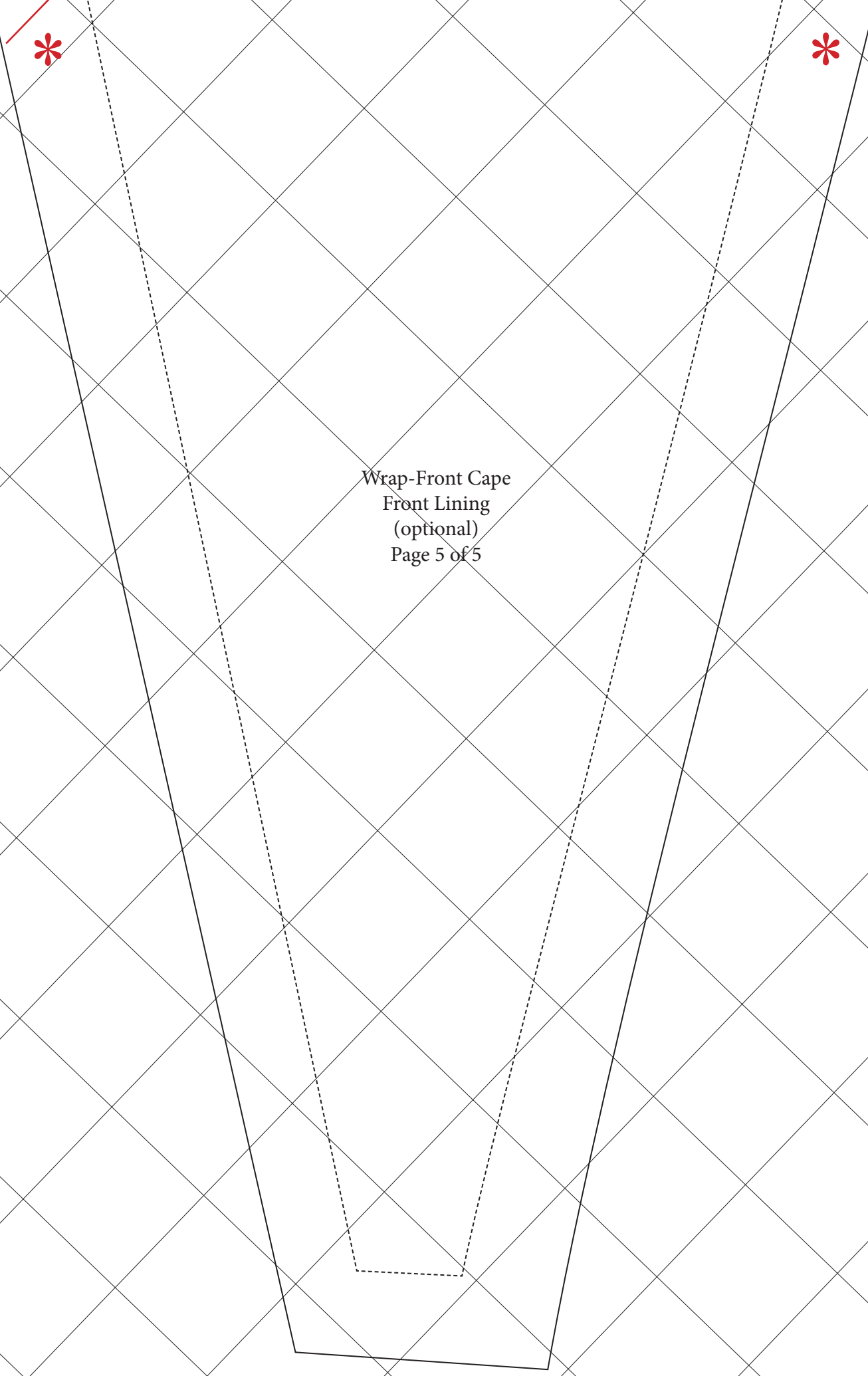
*dart*

Wrap-Front Cape  
Front Lining  
(optional)  
Page 3 of 5

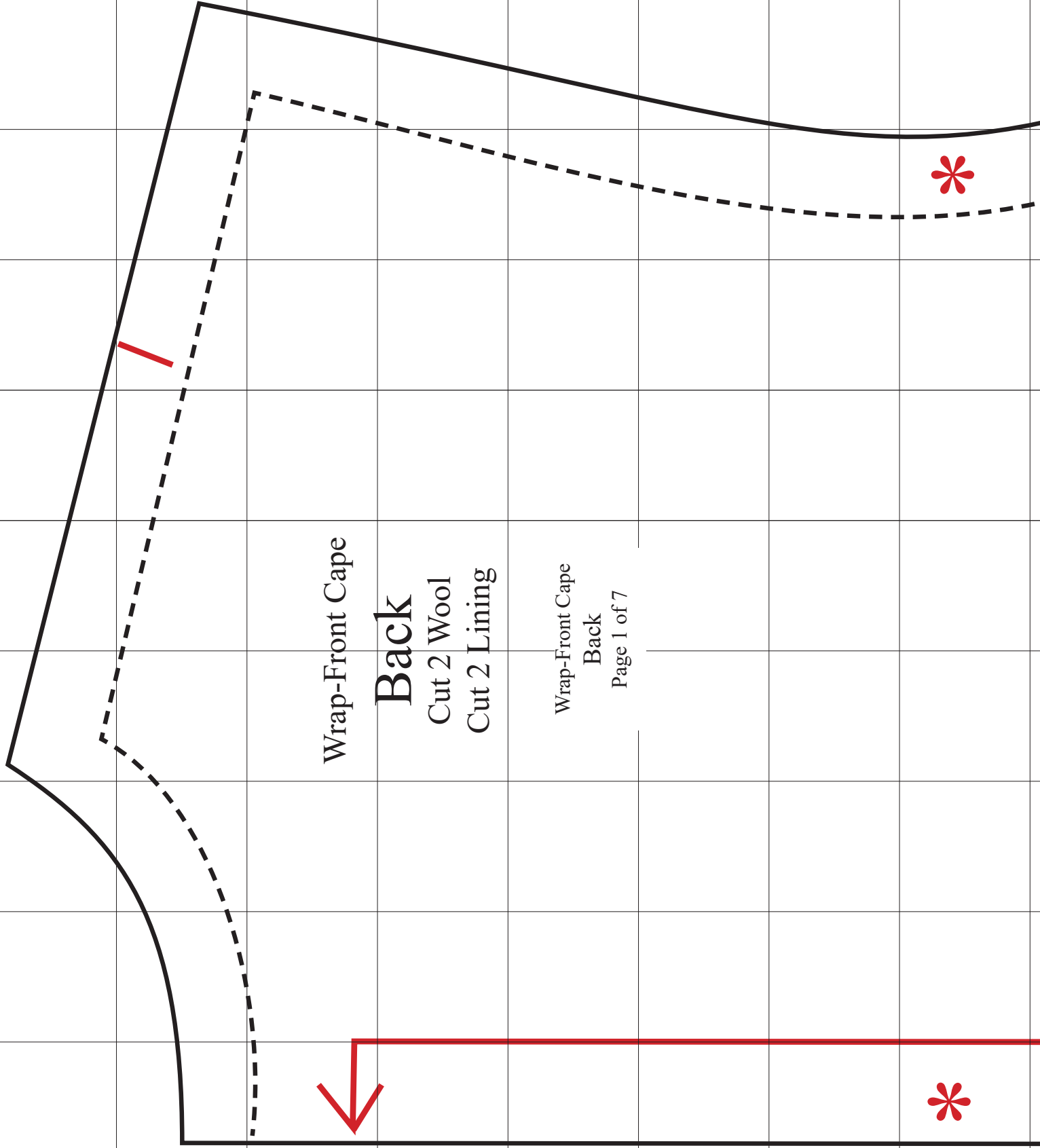


Wrap-Front Cape  
Front Lining  
(optional)  
Page 4 of 5





Wrap-Front Cape  
Front Lining  
(optional)  
Page 5 of 5



Wrap-Front Cape

**Back**

Cut 2 Wool

Cut 2 Lining

Wrap-Front Cape

Back

Page 1 of 7



Wrap-Front Cape  
Back  
Page 2 of 7



Wrap-Front Cape  
Back  
Page 3 of 7



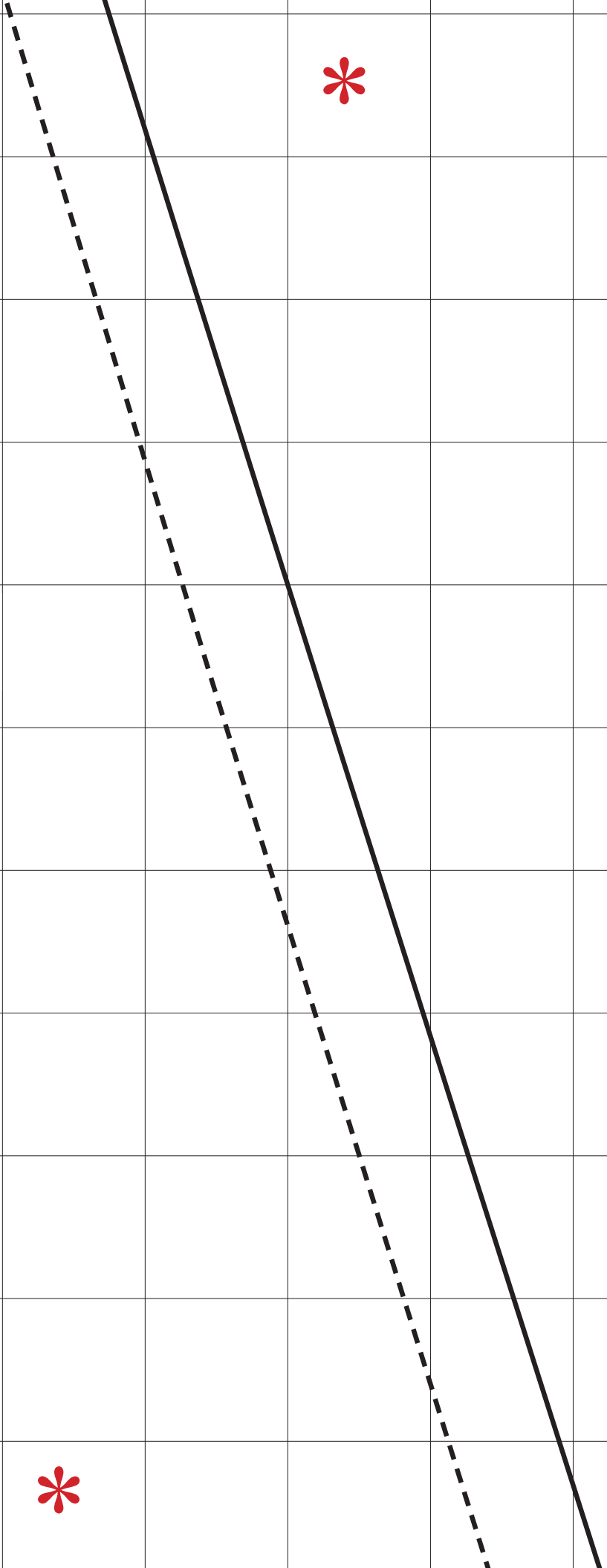


Wrap-Front Cape  
Back  
Page 4 of 7





Wrap-Front Cape  
Back  
Page 5 of 7

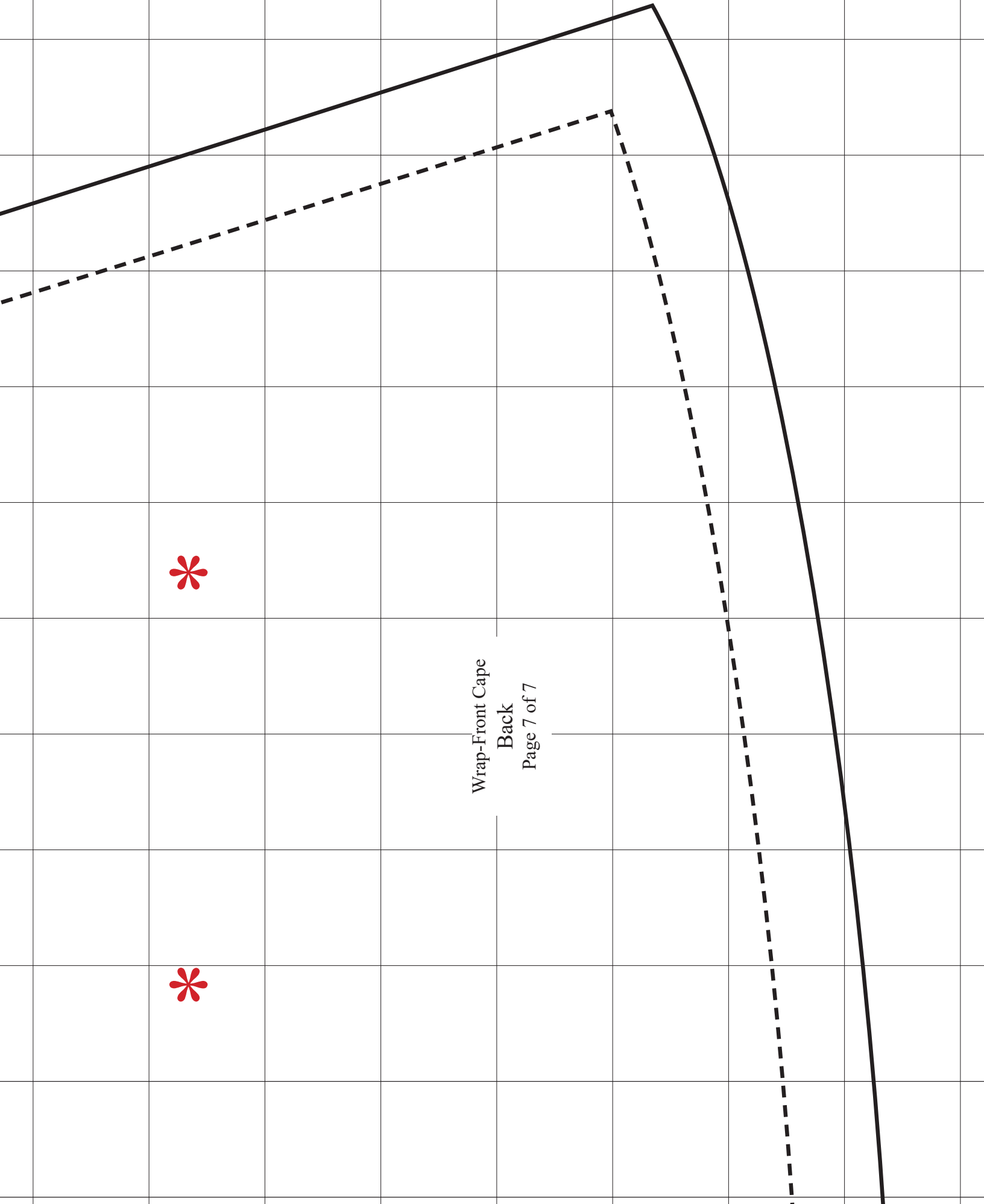




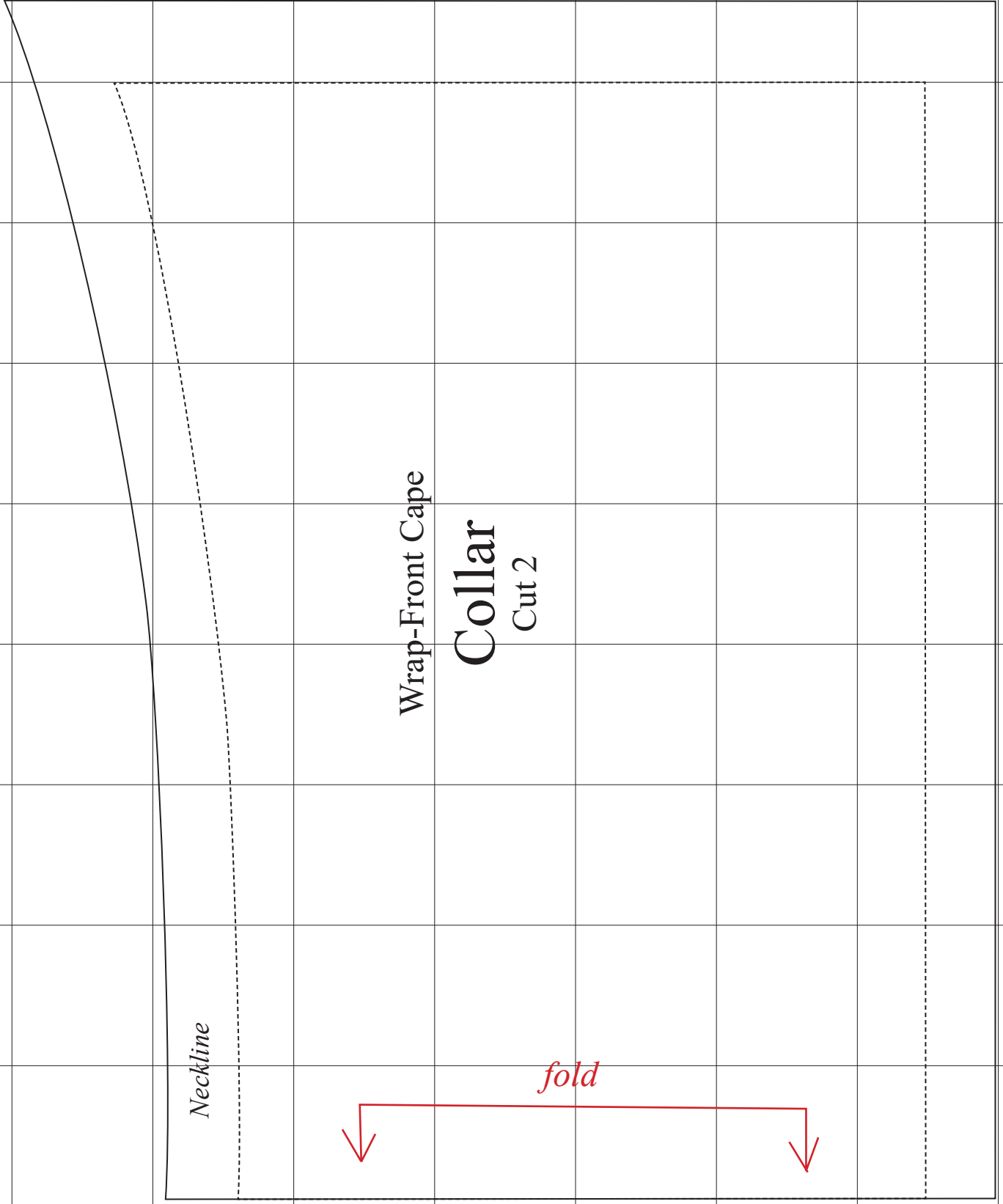


Wrap-Front Cape  
Back  
Page 6 of 7





Wrap-Front Cape  
Back  
Page 7 of 7

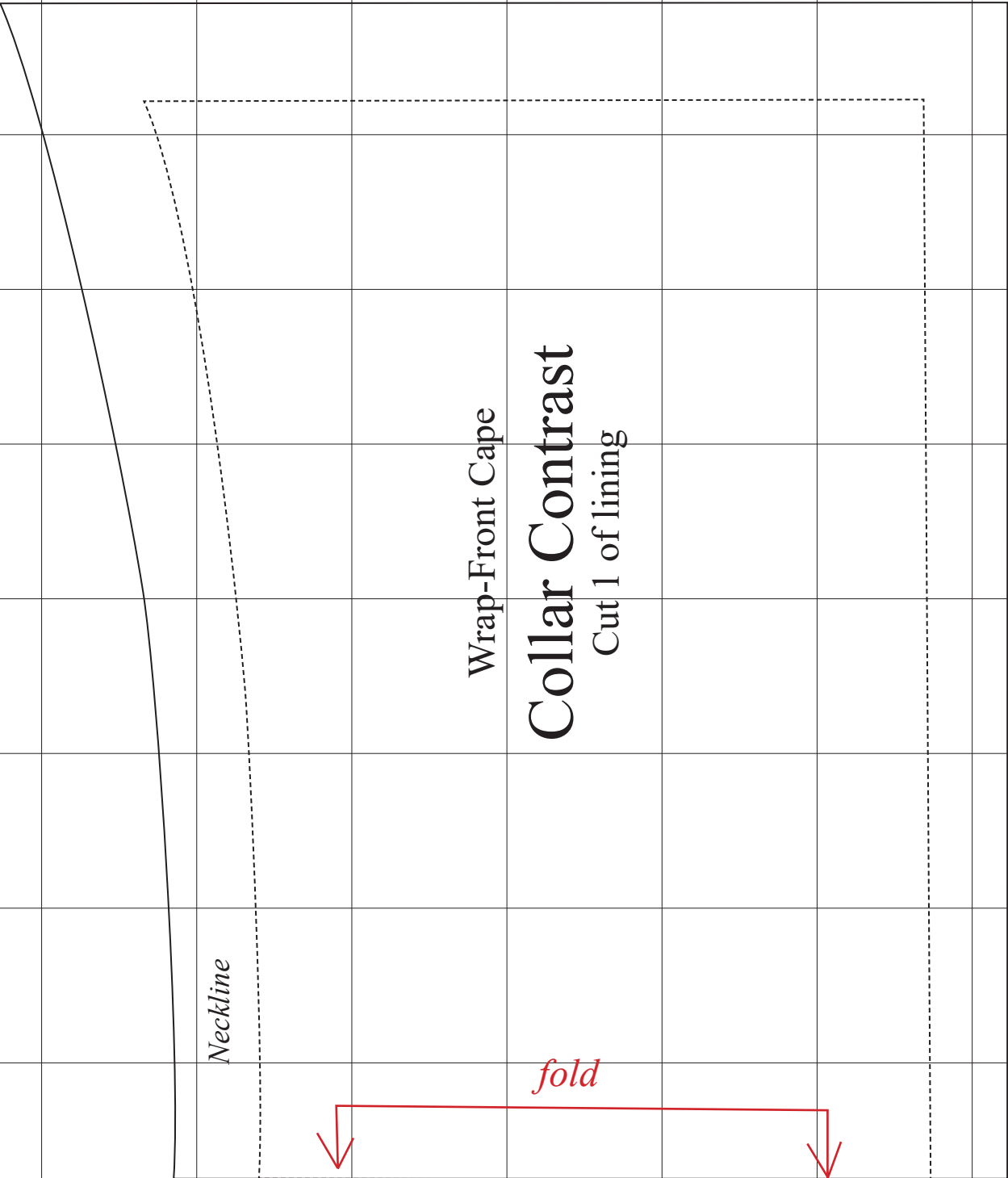


Wrap-Front Cape  
Collar  
Cut 2

*Neckline*

*fold*

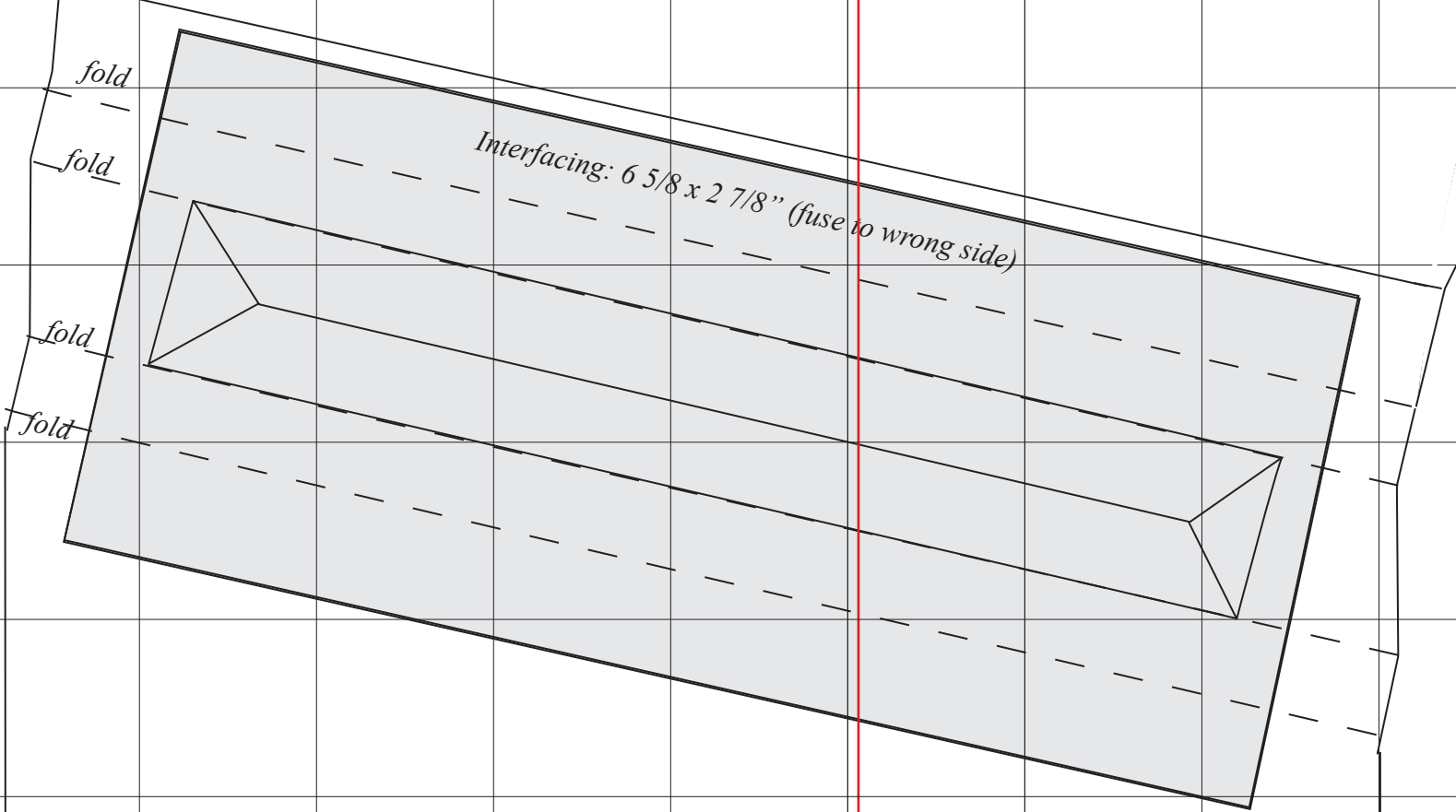




Wrap-Front Cape  
**Collar Contrast**  
Cut 1 of lining

*Neckline*

*fold*



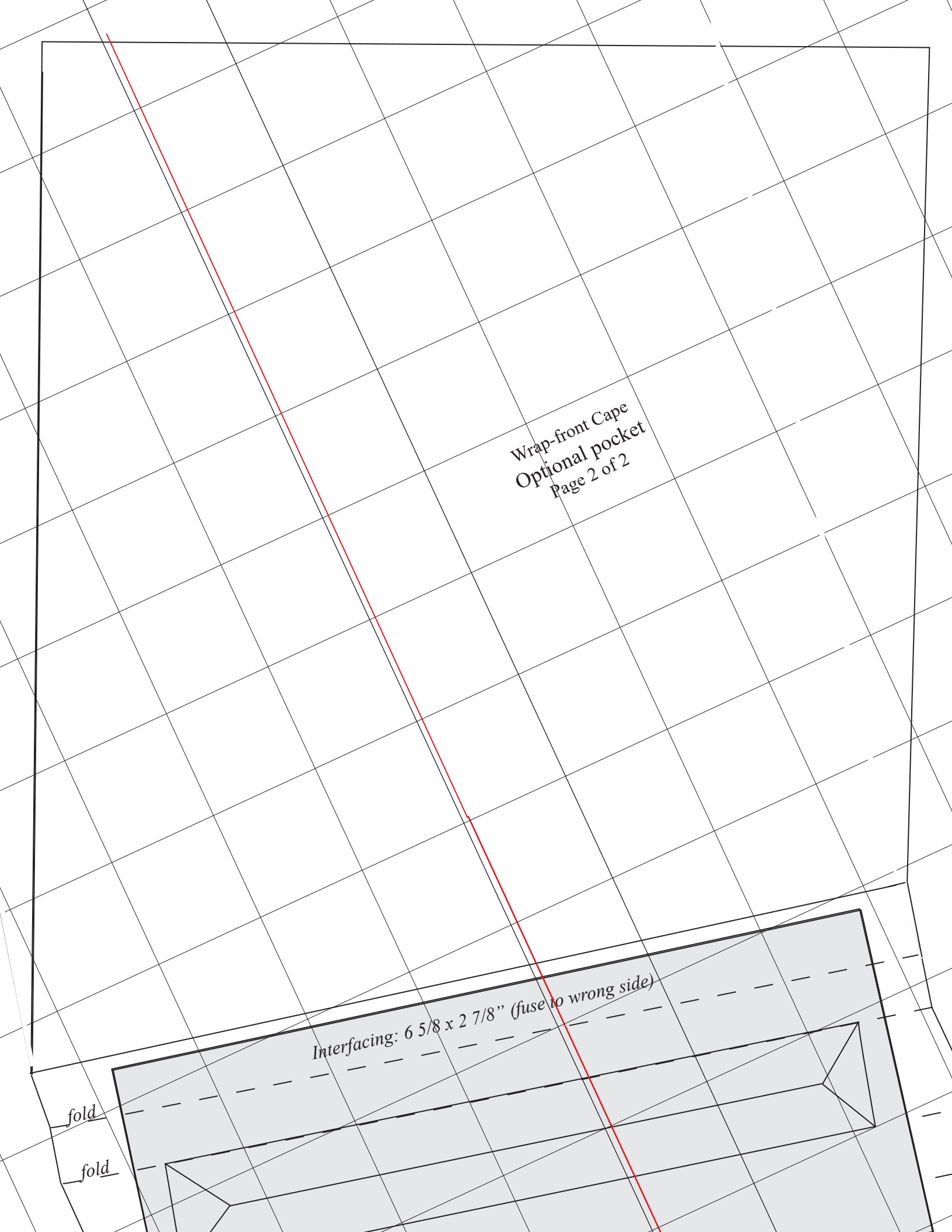
Wrap-front Cape  
Optional pocket  
Page 1 of 2

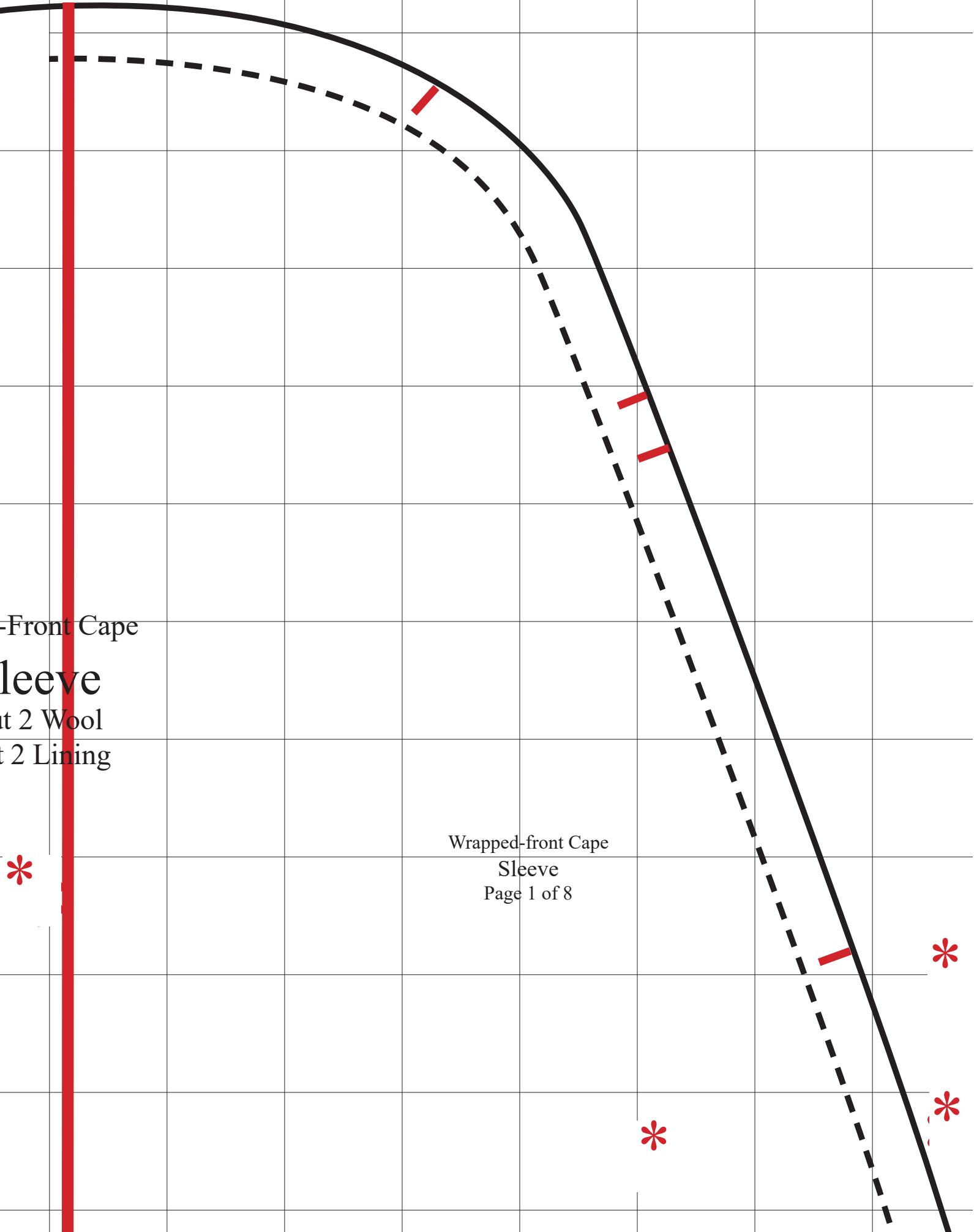
Wrap-front Cape  
Optional pocket  
Page 2 of 2

Interfacing:  $6 \frac{5}{8} \times 2 \frac{7}{8}$ " (fuse to wrong side)

fold

fold





Front Cape

Sleeve

Wool

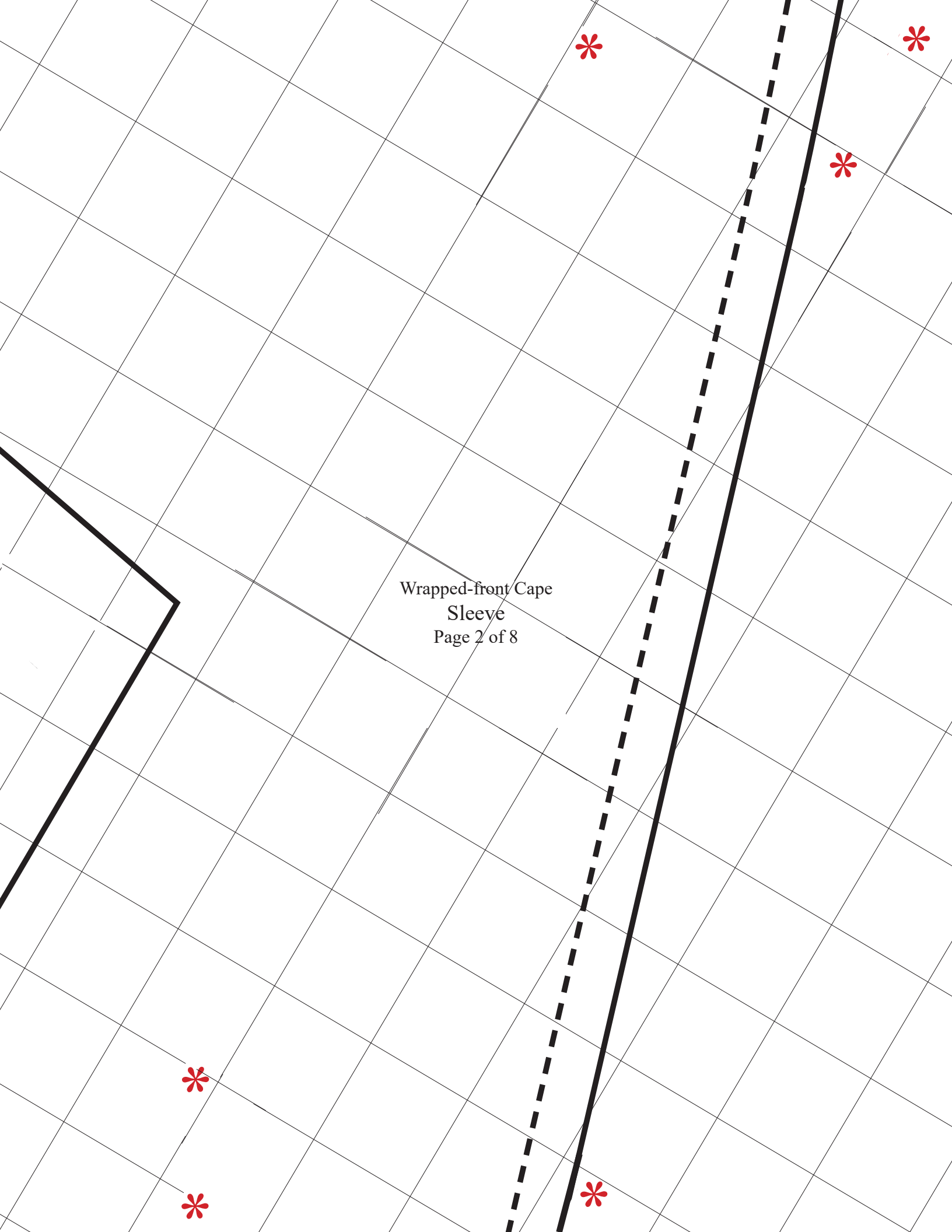
Lining

Wrapped-front Cape

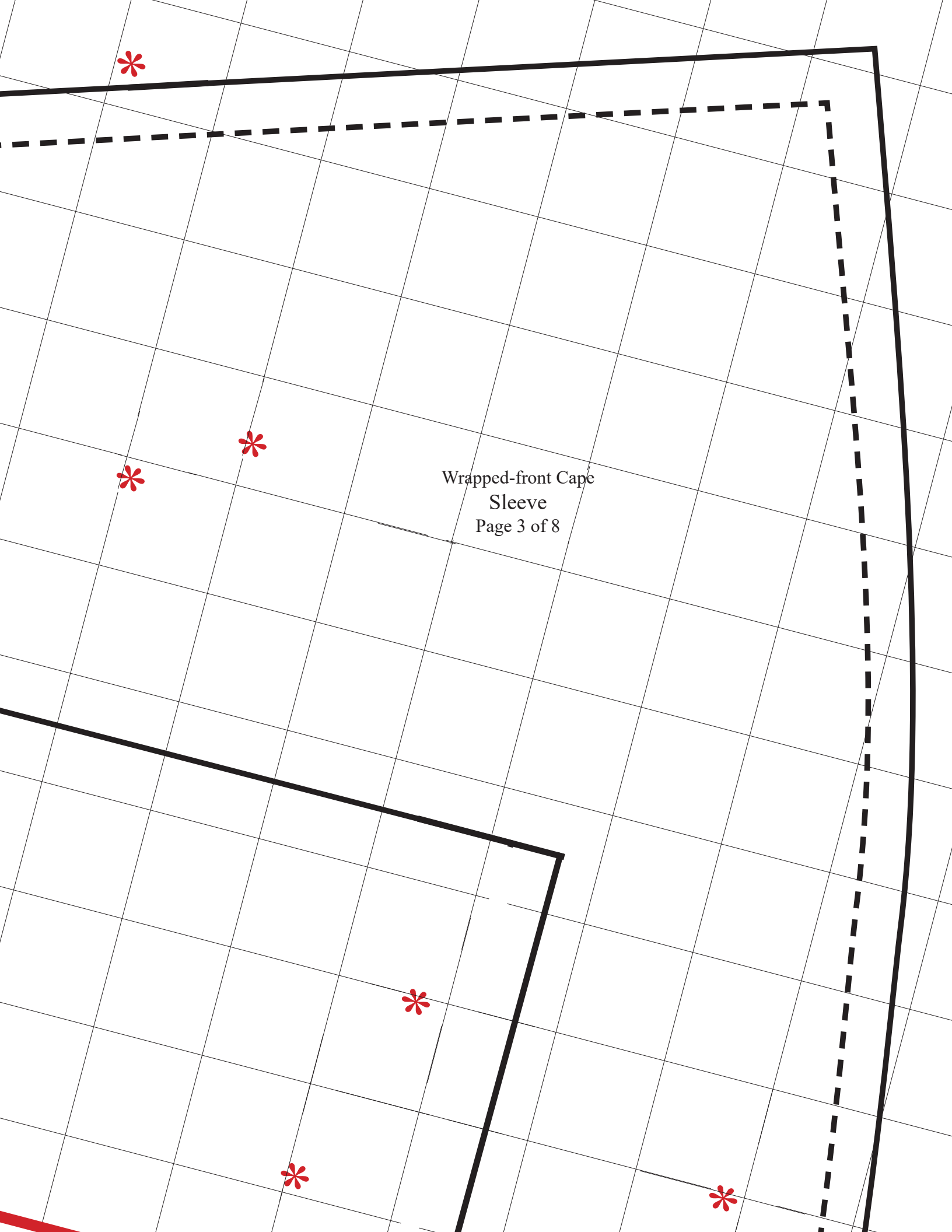
Sleeve

Page 1 of 8

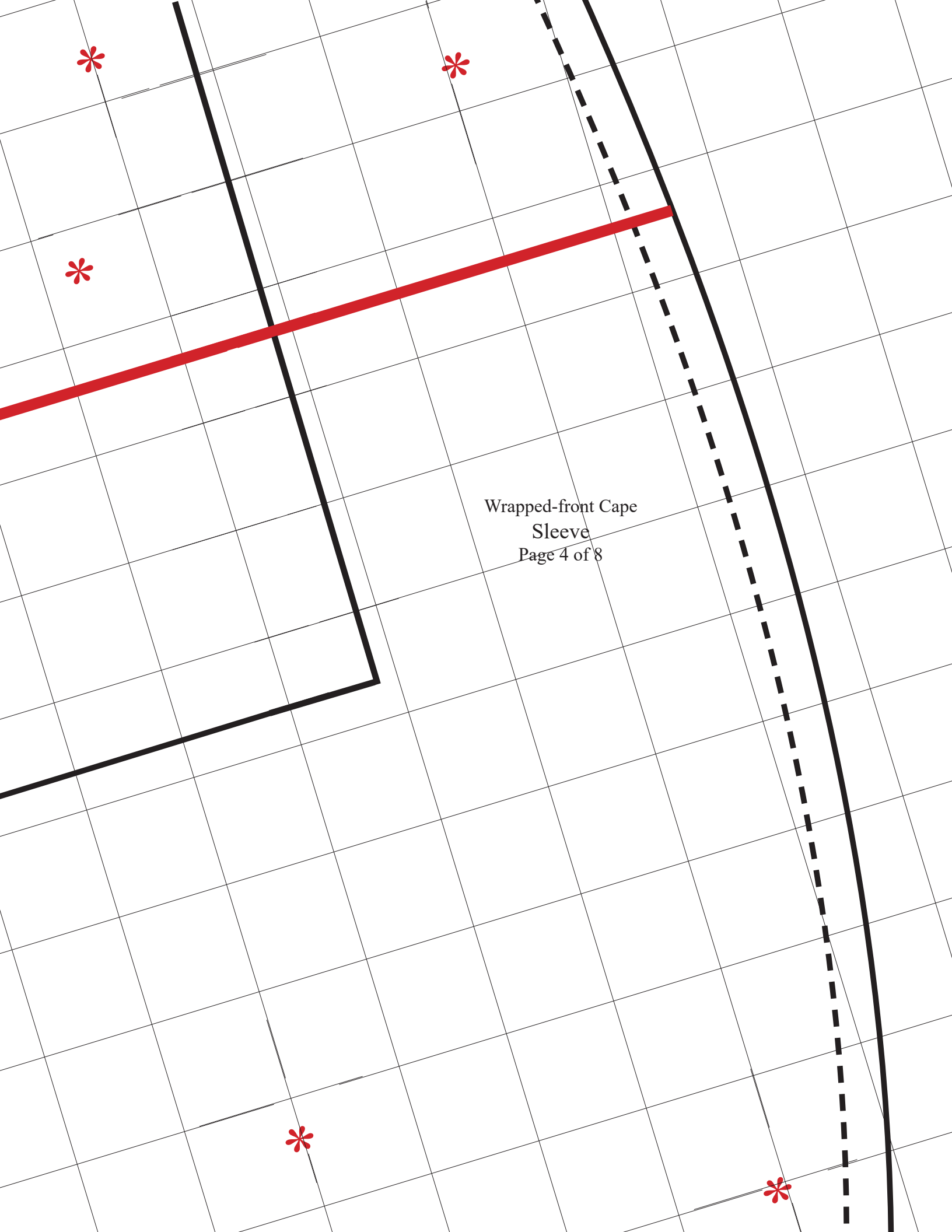
Wrapped-front Cape  
Sleeve  
Page 2 of 8



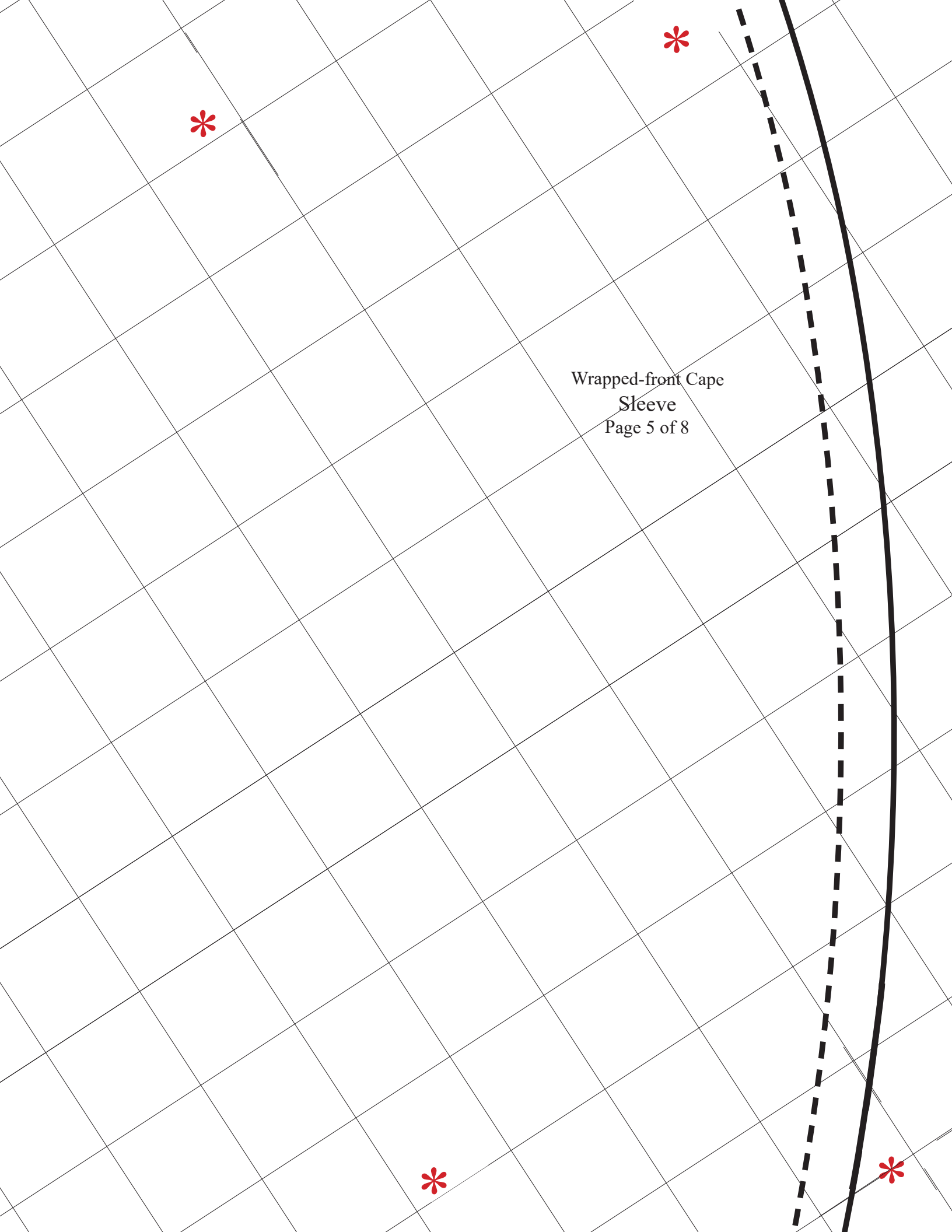




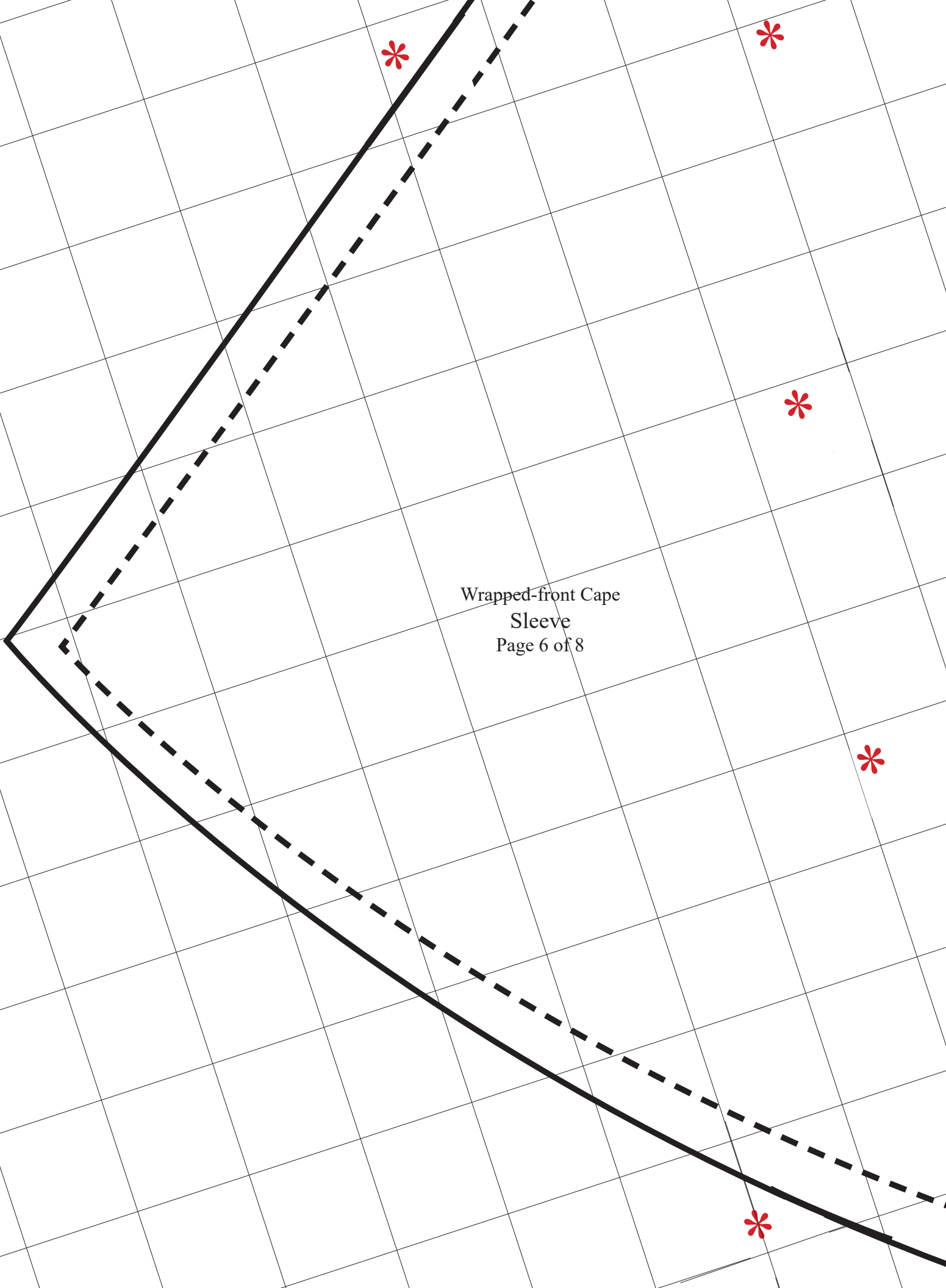
Wrapped-front Cape  
Sleeve  
Page 3 of 8



Wrapped-front Cape  
Sleeve  
Page 4 of 8



Wrapped-front Cape  
Sleeve  
Page 5 of 8

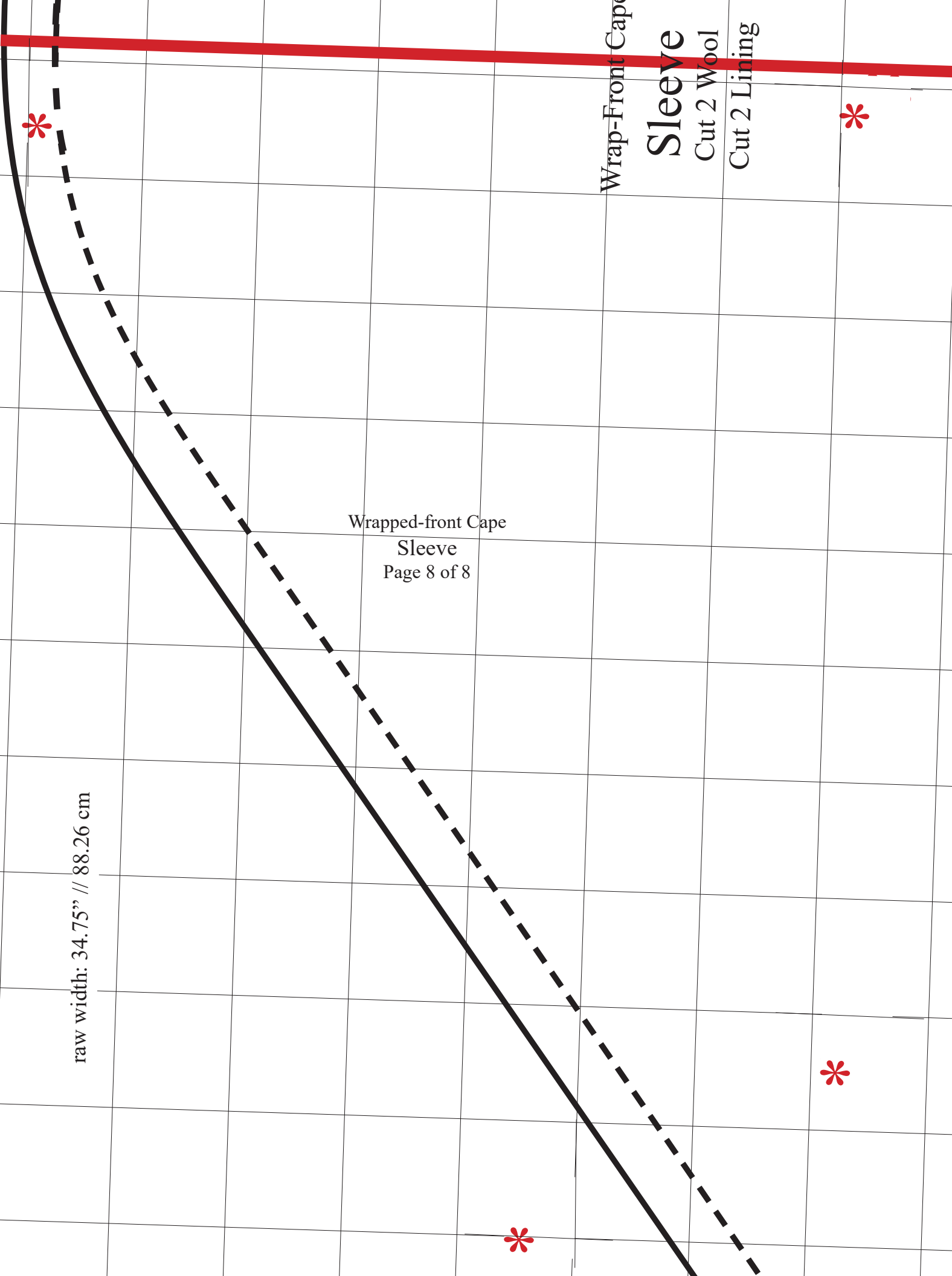


Wrapped-front Cape  
Sleeve  
Page 6 of 8



Wrapped-front Cape  
Sleeve  
Page 7 of 8





Wrap-Front Cape

# Sleeve

Cut 2 Wool

Cut 2 Lining

Wrapped-front Cape  
Sleeve  
Page 8 of 8

raw width: 34.75" // 88.26 cm

