

Wrap-Front Cape

Front

Cut 2 Wool

Cut 2 Lining

(or use alternate lining pattern)

Wrap-Front Cape

Front

Page 1 of 4

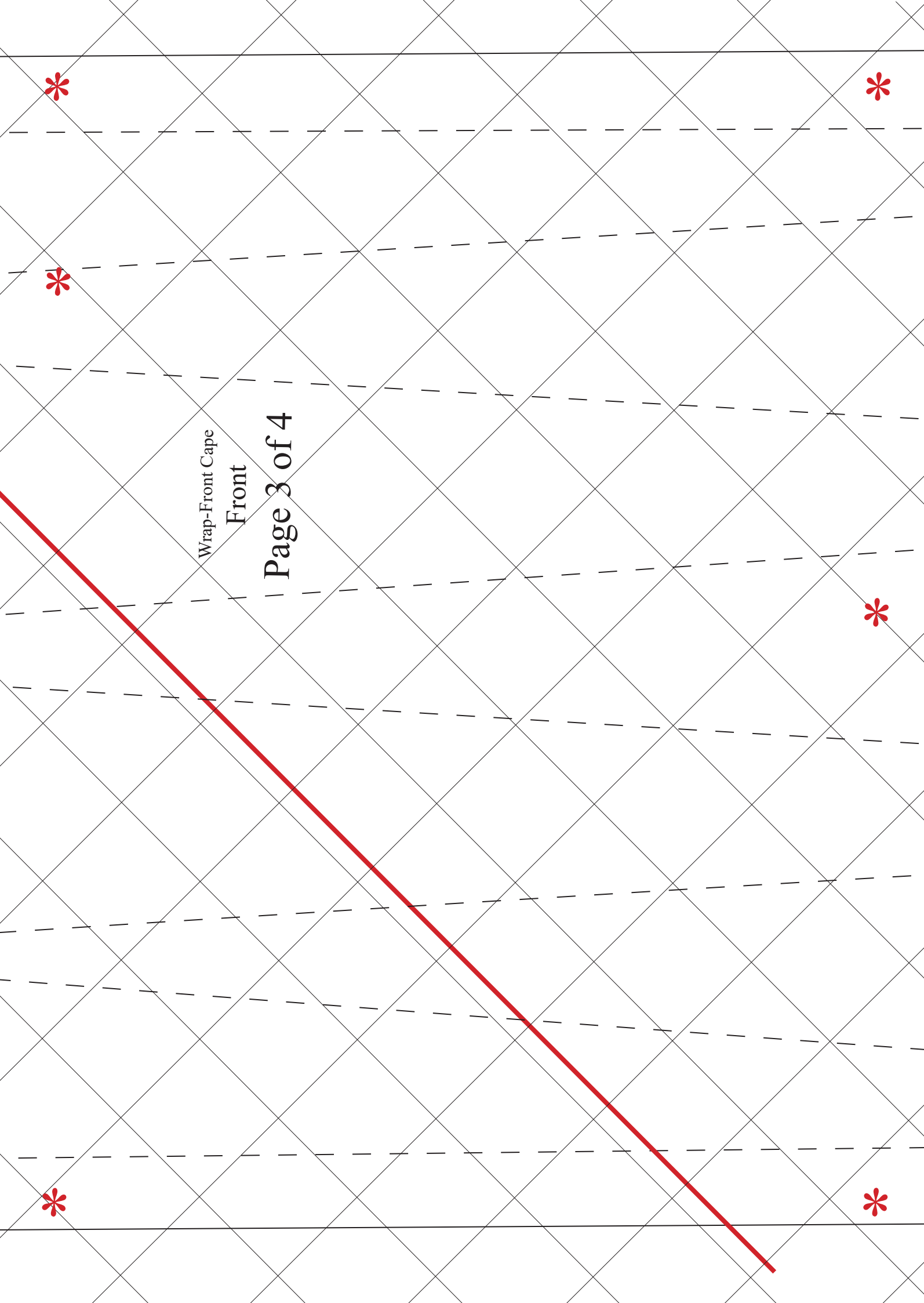




Wrap-Front Cape
Front

Page 2 of 4





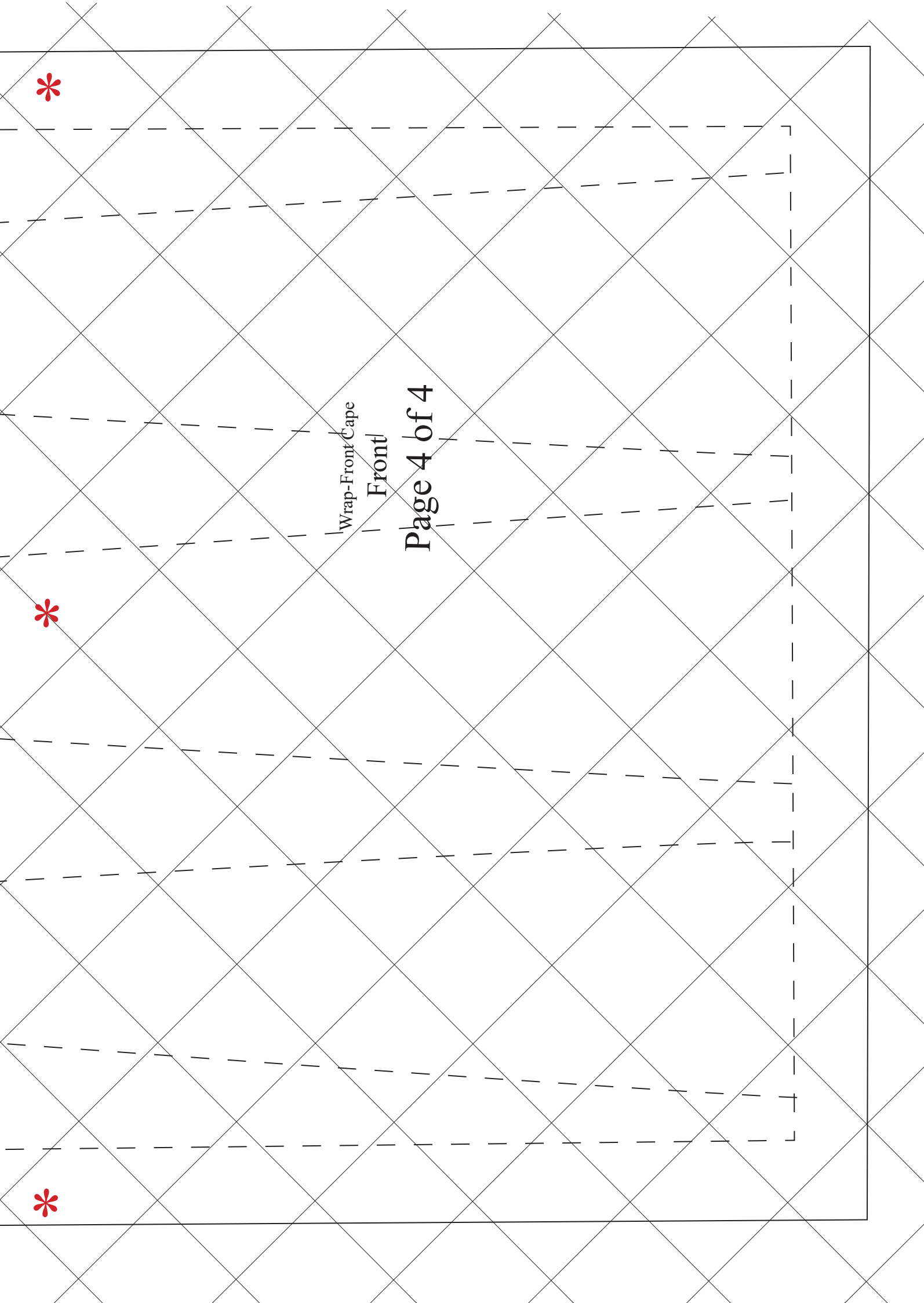
Wrap-Front Cape
Front

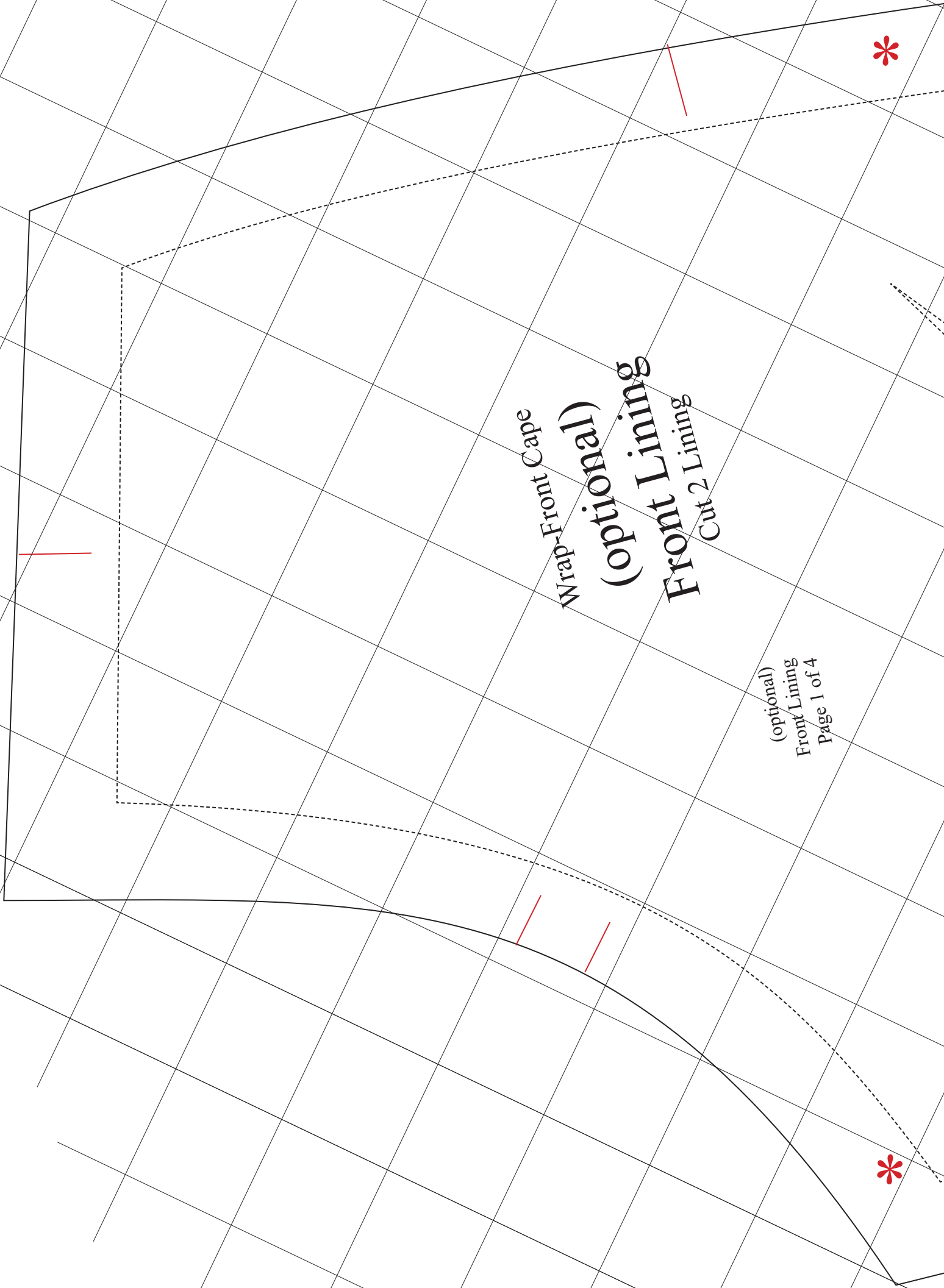
Page 3 of 4



Wrap-Front Cape
Front

Page 4 of 4

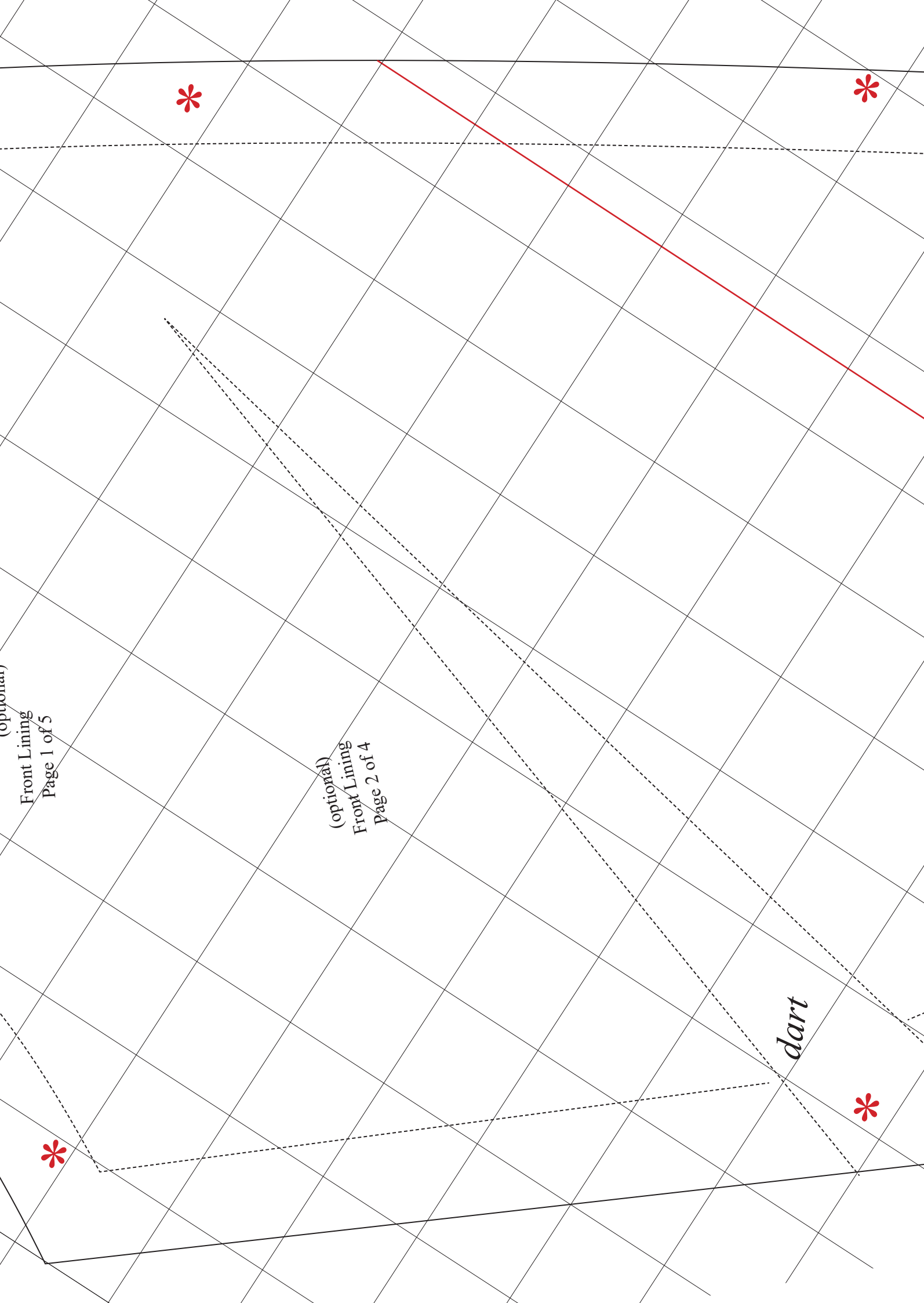




Wrap-Front Cape
(optional)
Front Lining
Cut 2 Lining

(optional)
Front Lining
Page 1 of 4





(optional)
Front Lining
Page 1 of 5

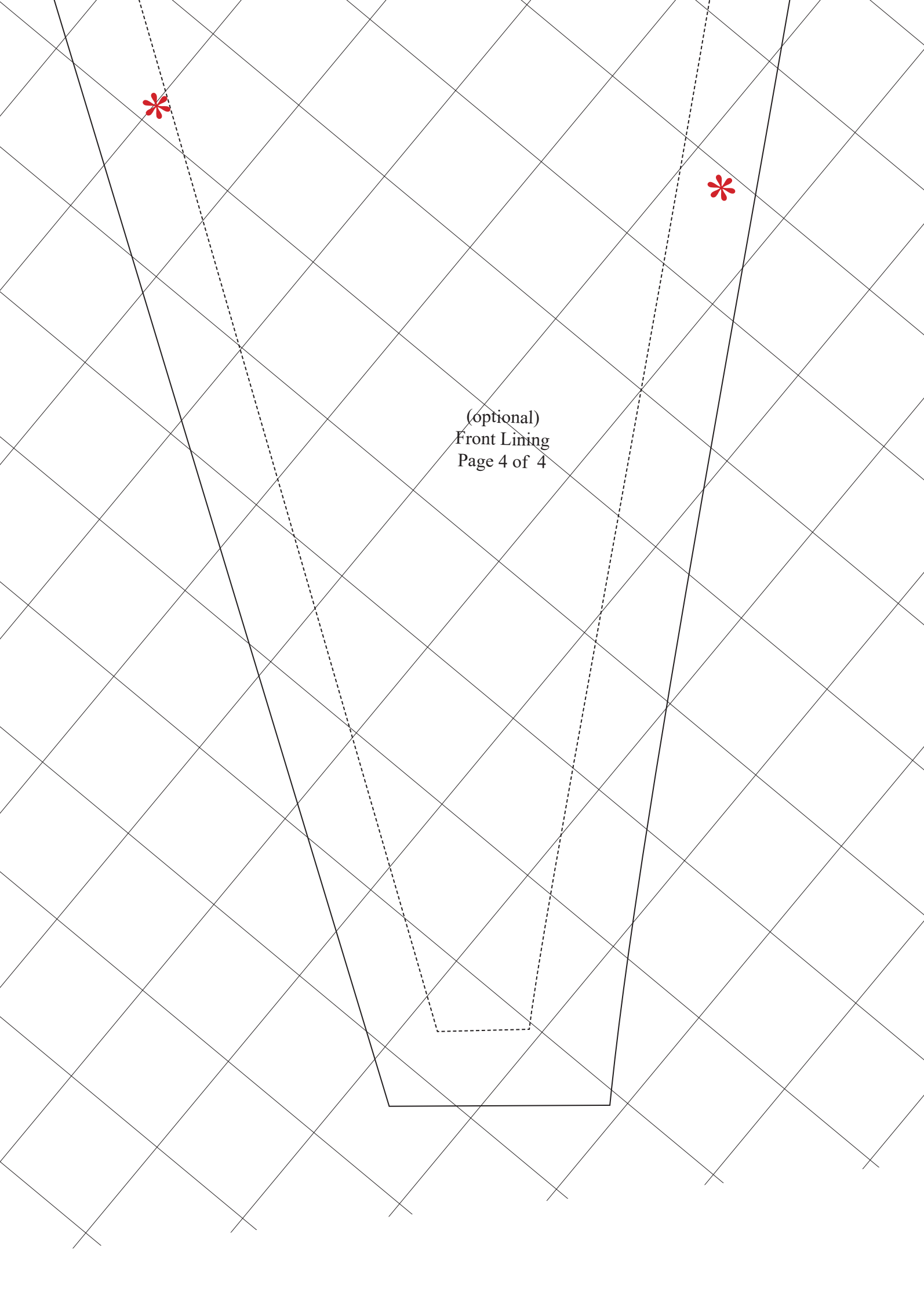
(optional)
Front Lining
Page 2 of 4

dart

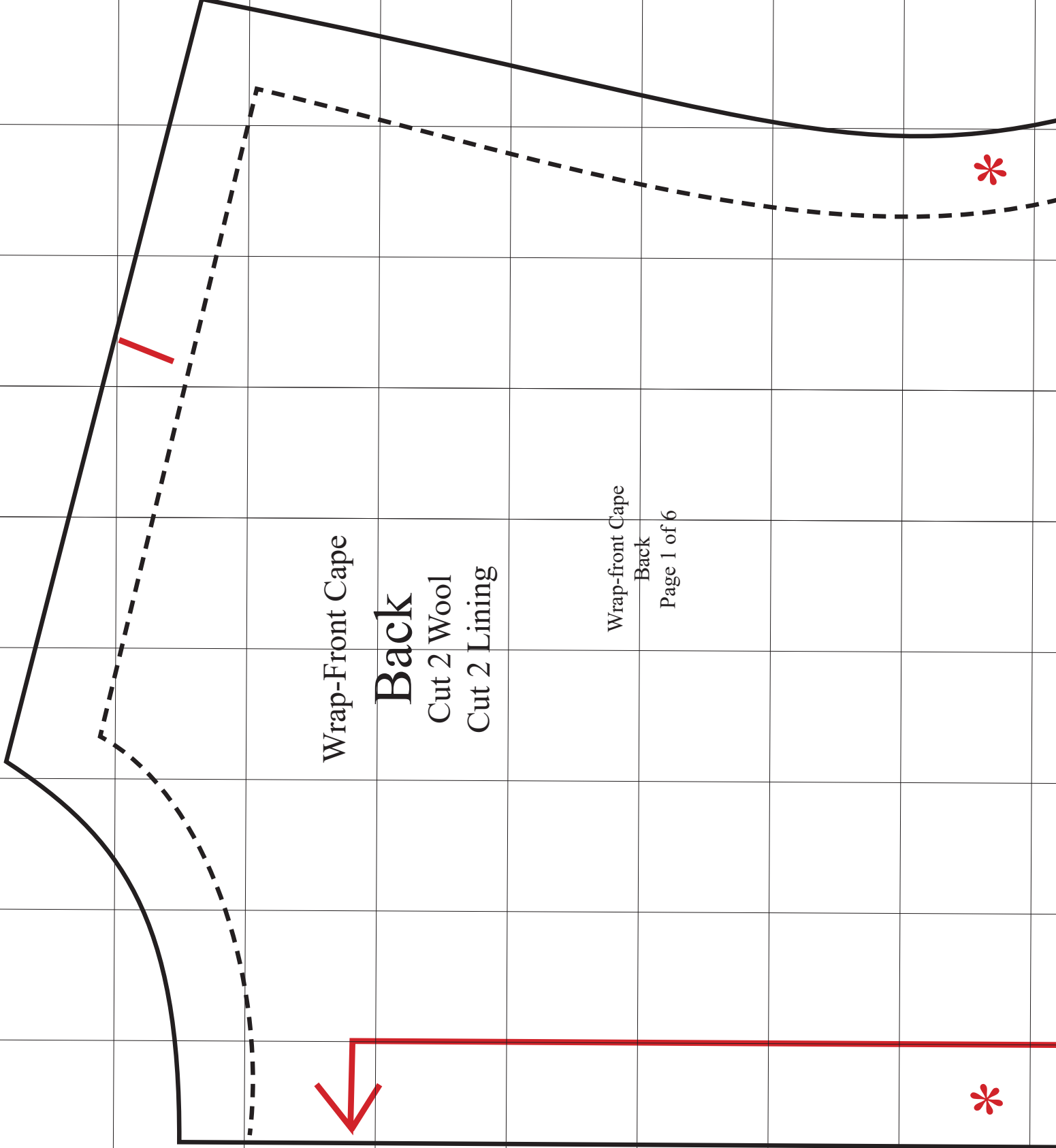


(optional)
Front Lining
Page 3 of 4





(optional)
Front Lining
Page 4 of 4



Wrap-Front Cape

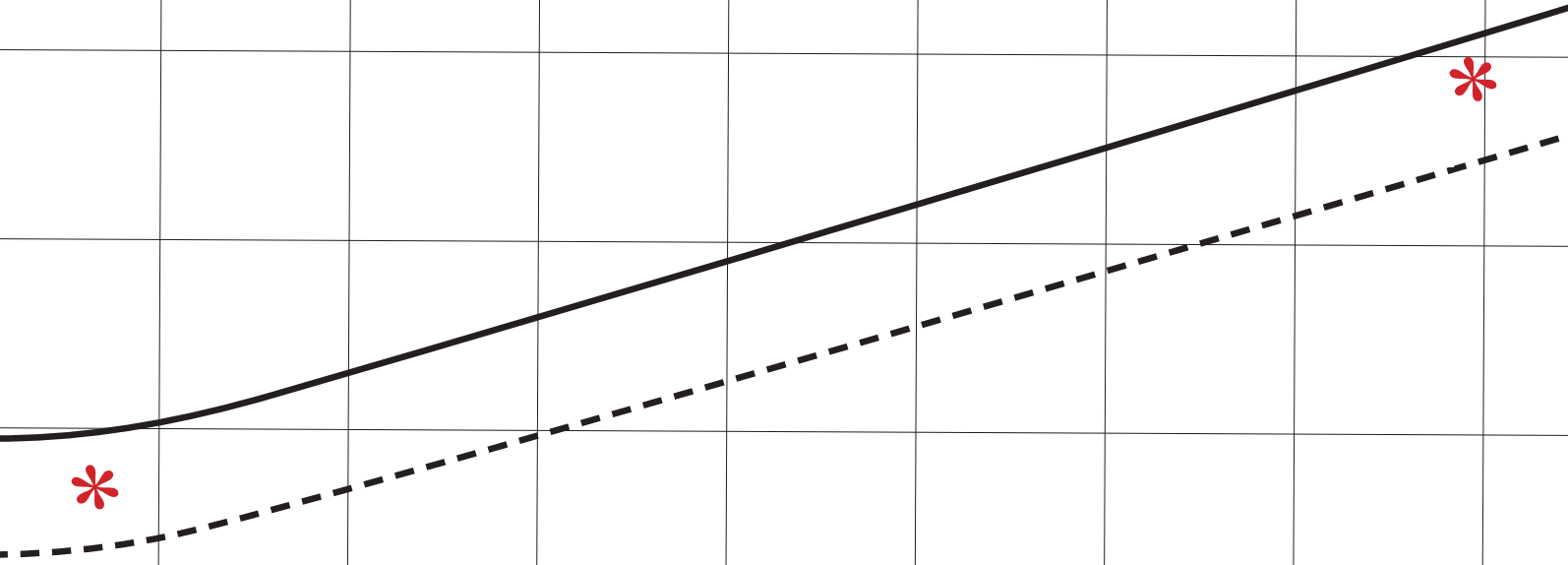
Back

Cut 2 Wool

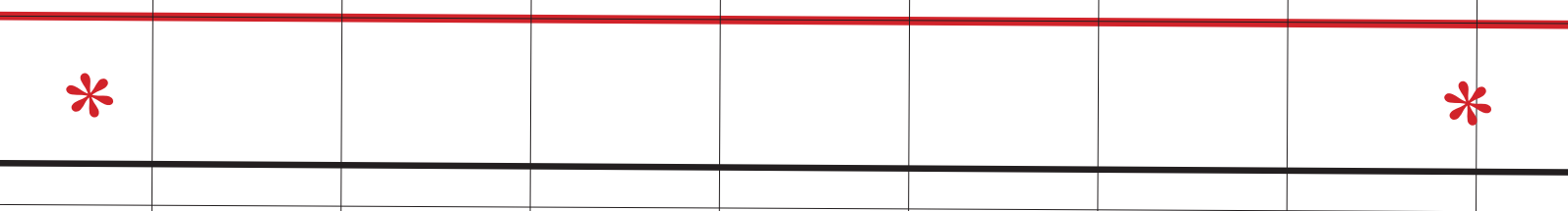
Cut 2 Lining

Wrap-front Cape
Back

Page 1 of 6



Wrap-front Cape
Back
Pag 2 of 6

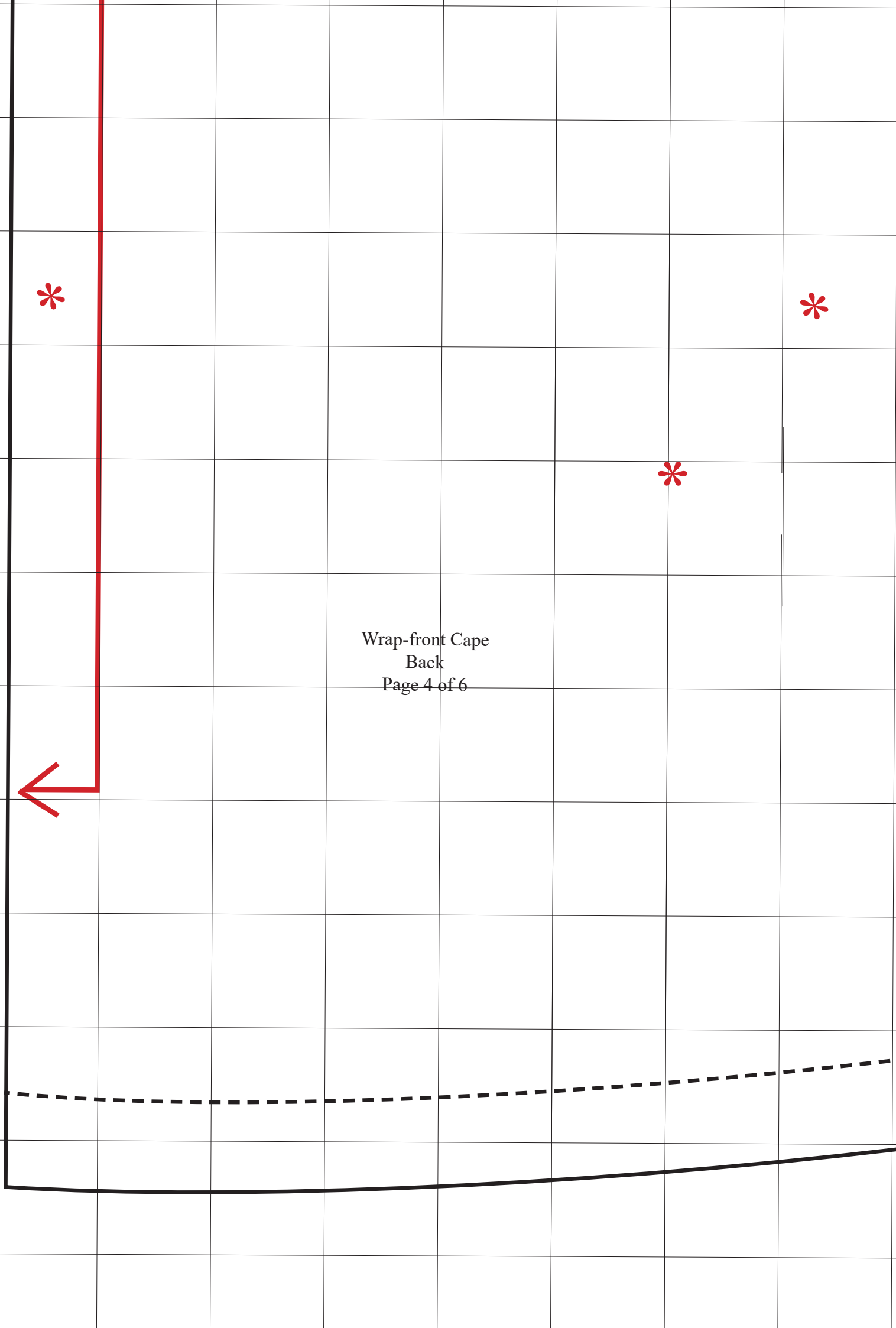




Wrap-front Cape
Back
Page 3 of 6

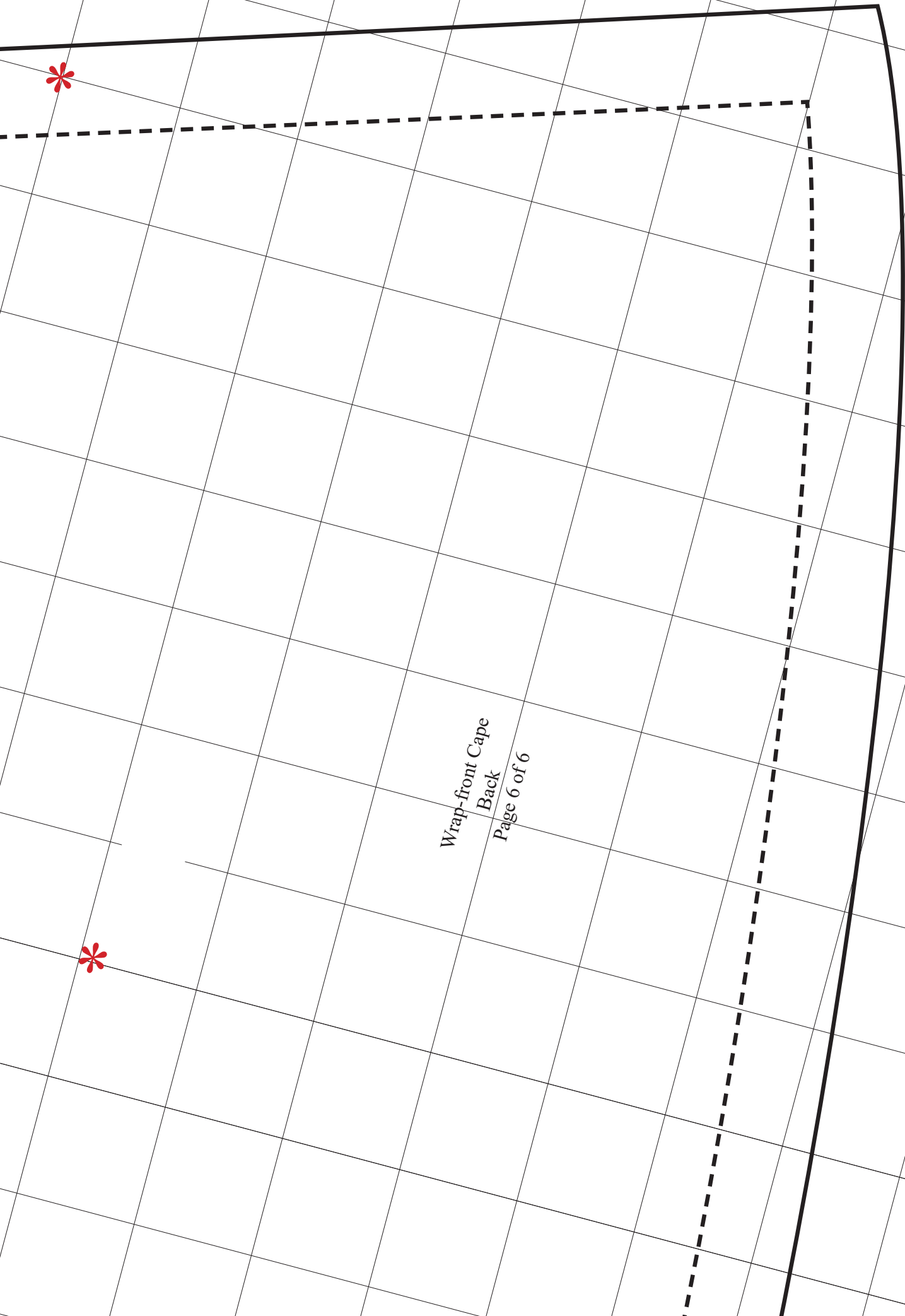


Wrap-front Cape
Back
Page 4 of 6

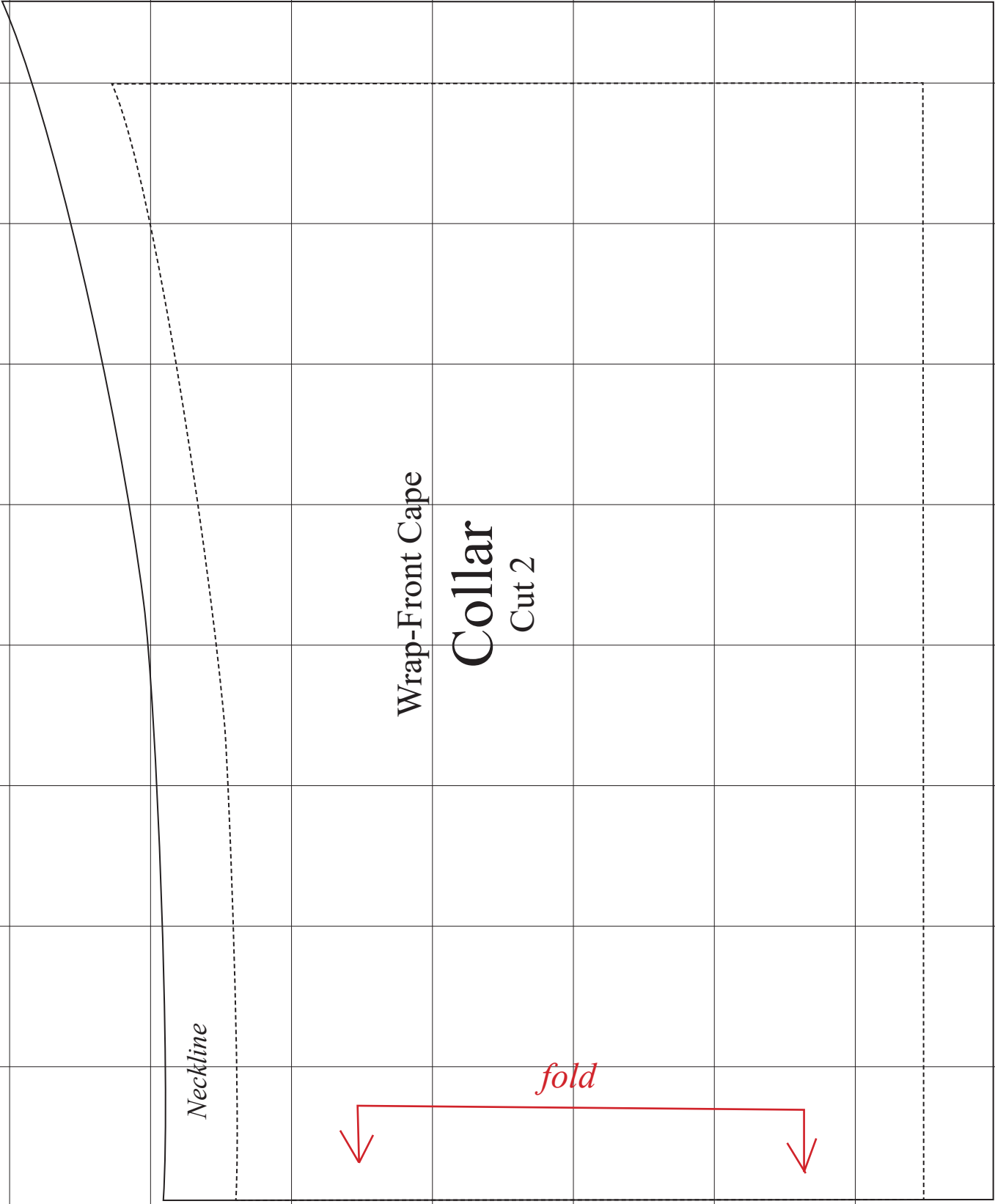


Wrap-front Cape
Back
Page 5 of 6





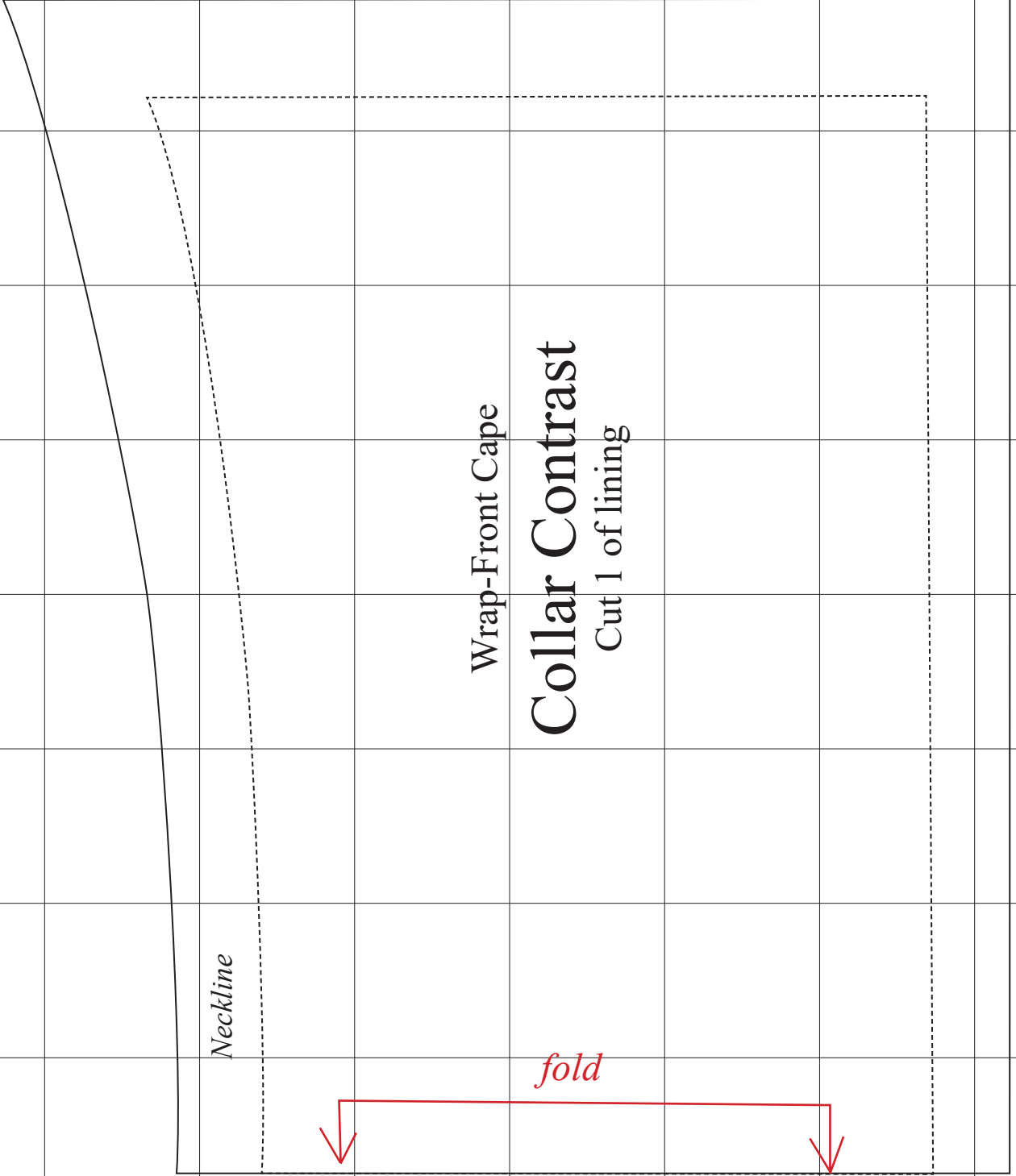
Wrap-front Cape
Back
Page 6 of 6



Wrap-Front Cape
Collar
Cut 2

Neckline

fold



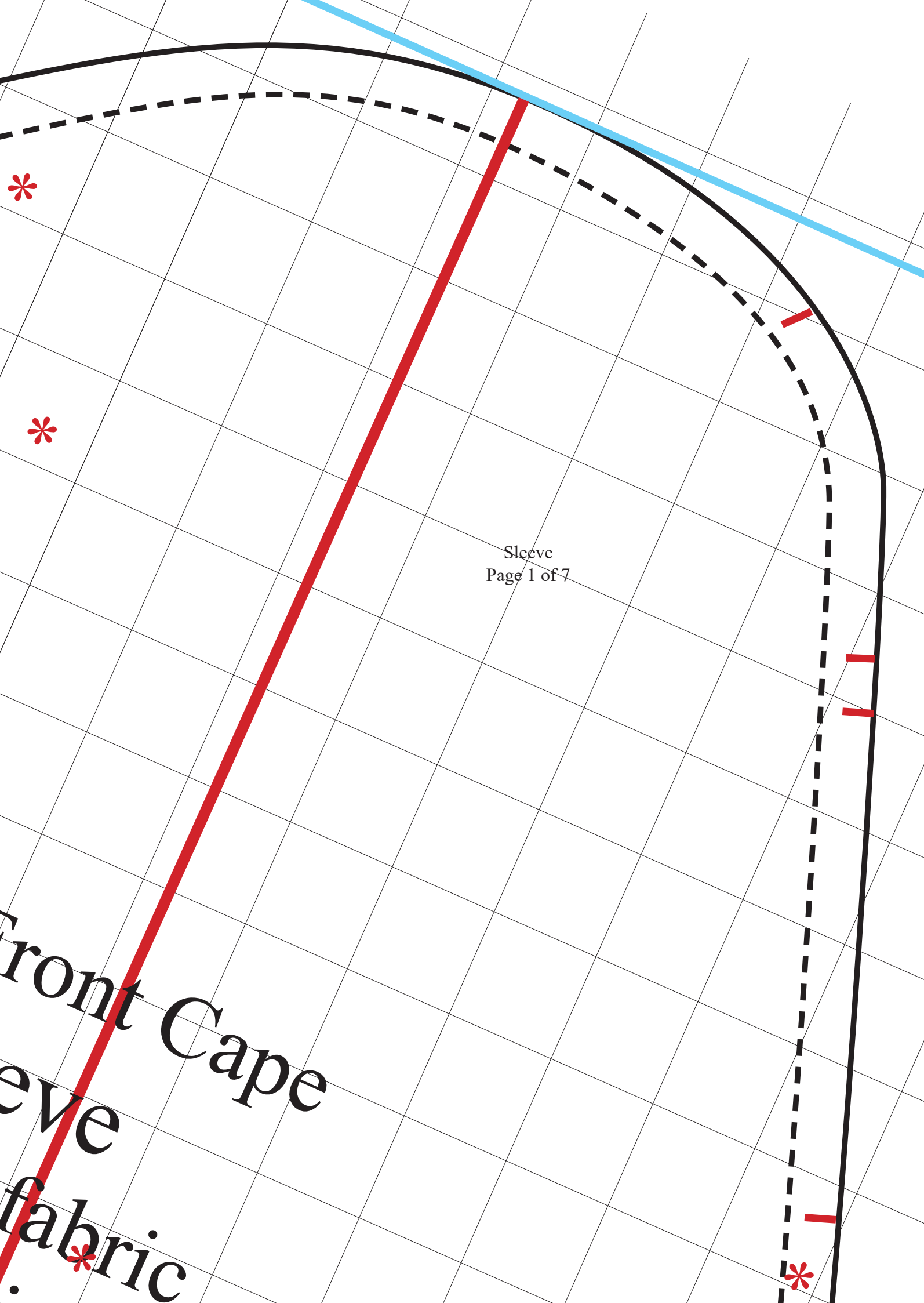
Wrap-Front Cape

Collar Contrast

Cut 1 of lining

Neckline

fold



Sleeve
Page 1 of 7

Front Cape
Sleeve
fabric

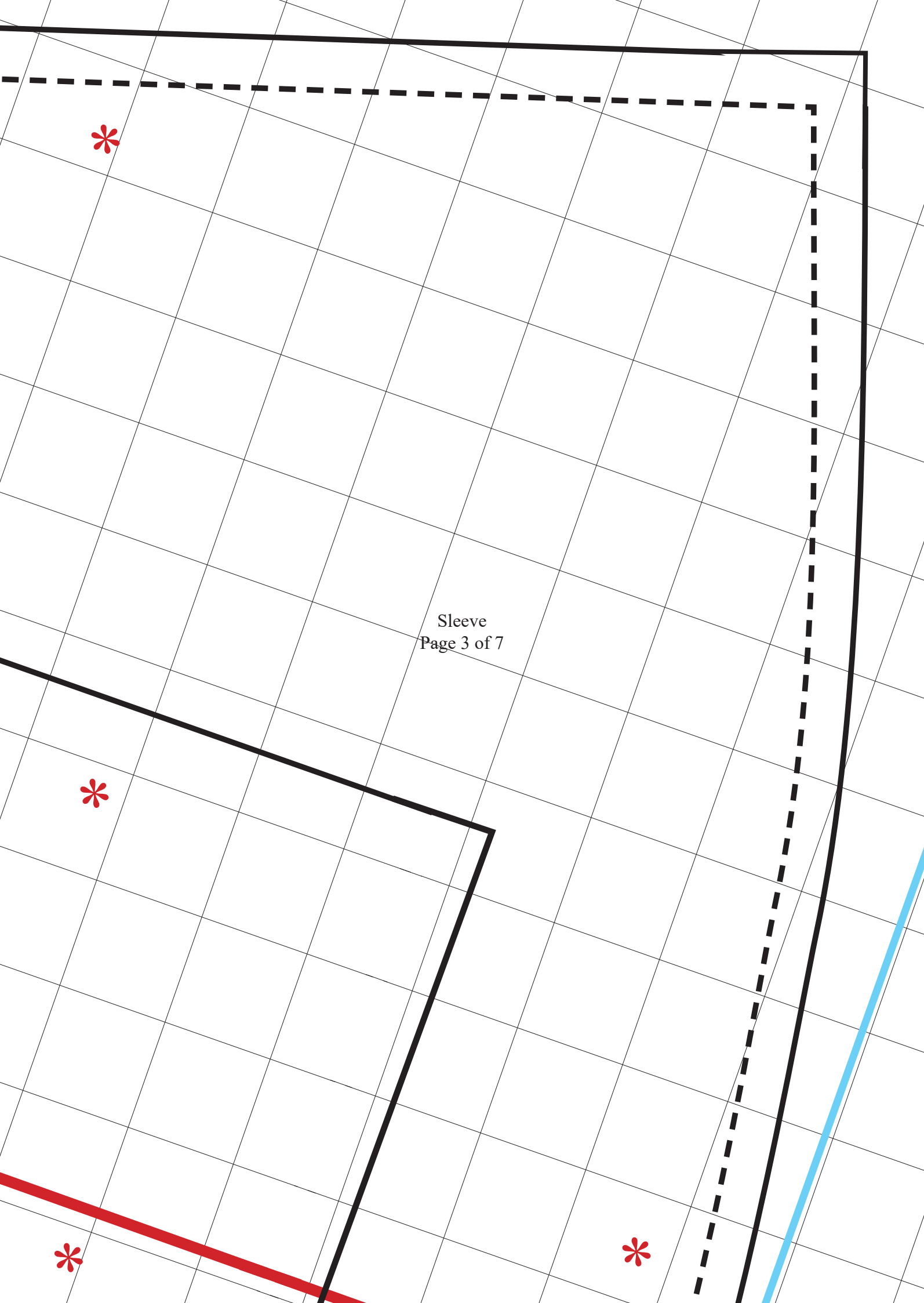
ve
fabric
ining

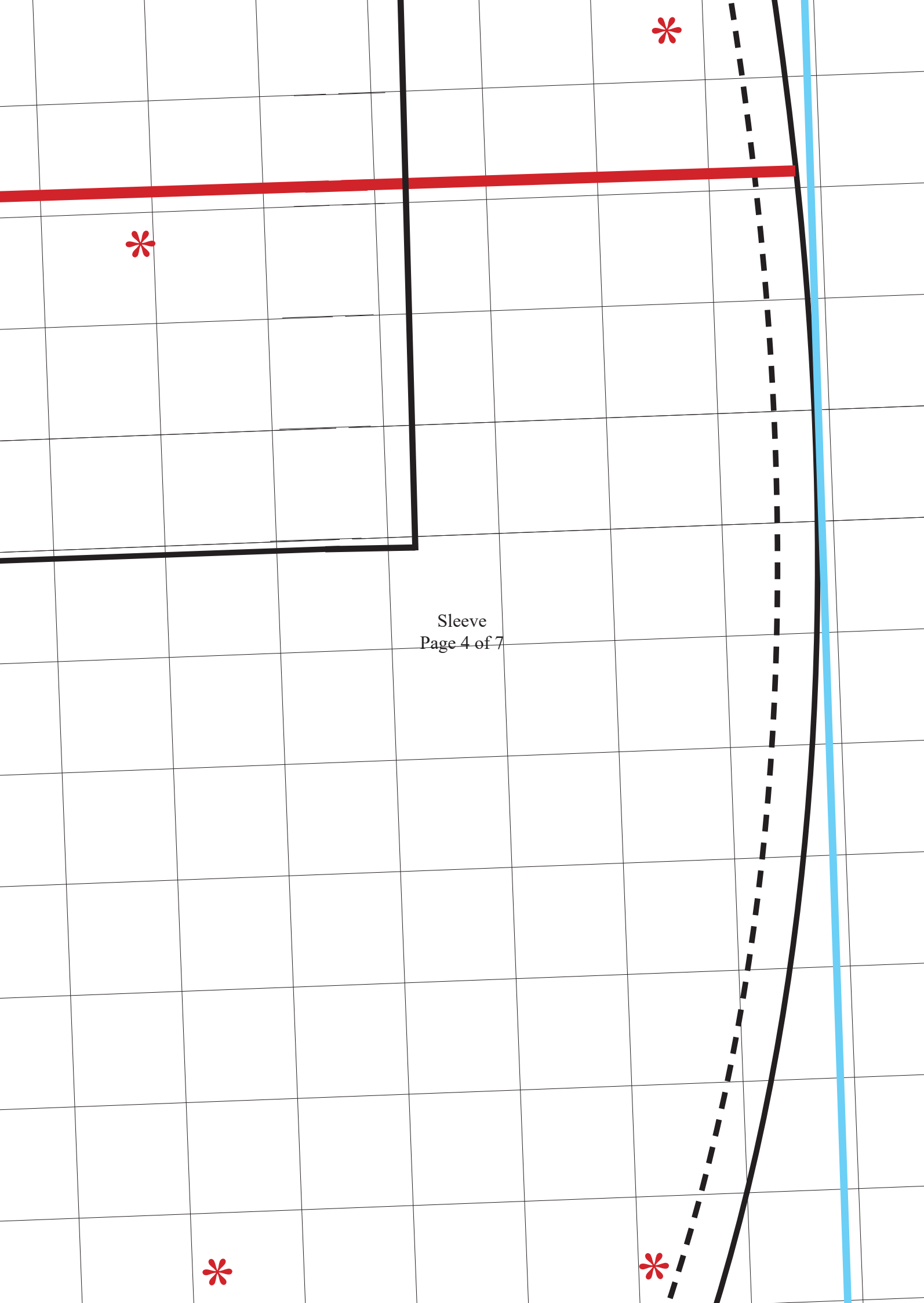
Sleeve
Page 2 of 7

cket



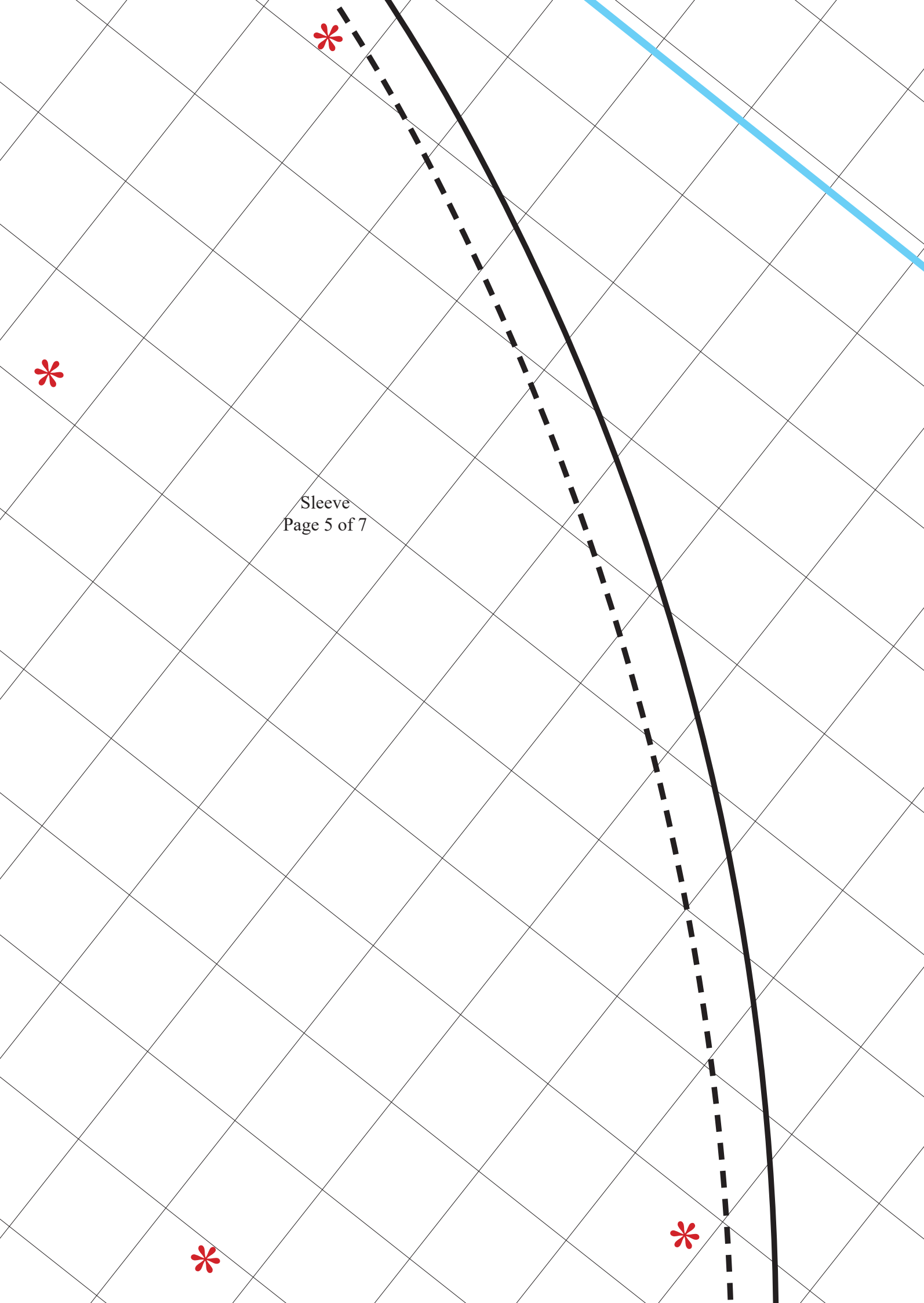
Sleeve
Page 3 of 7





Sleeve
Page 4 of 7

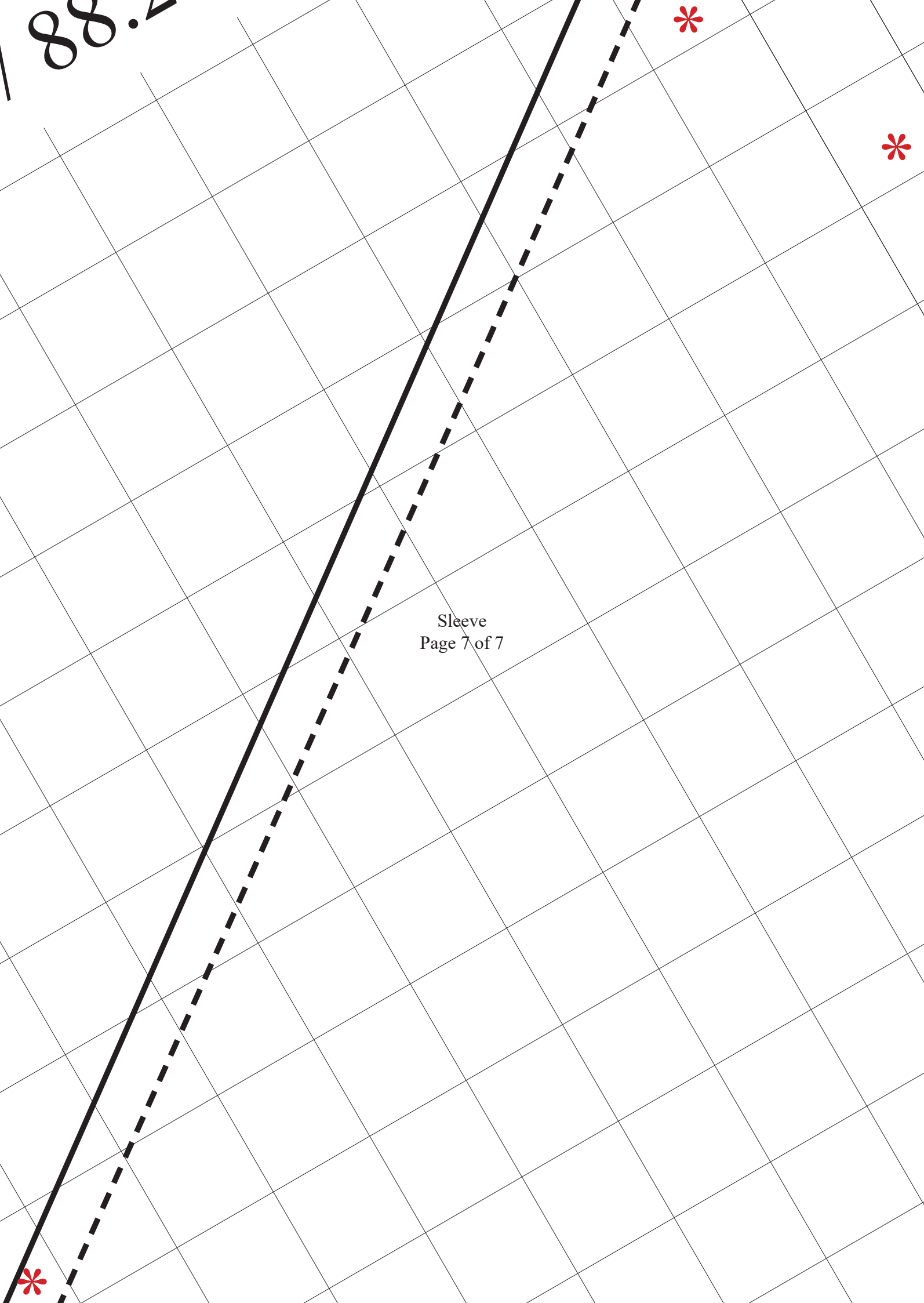
Sleeve
Page 5 of 7



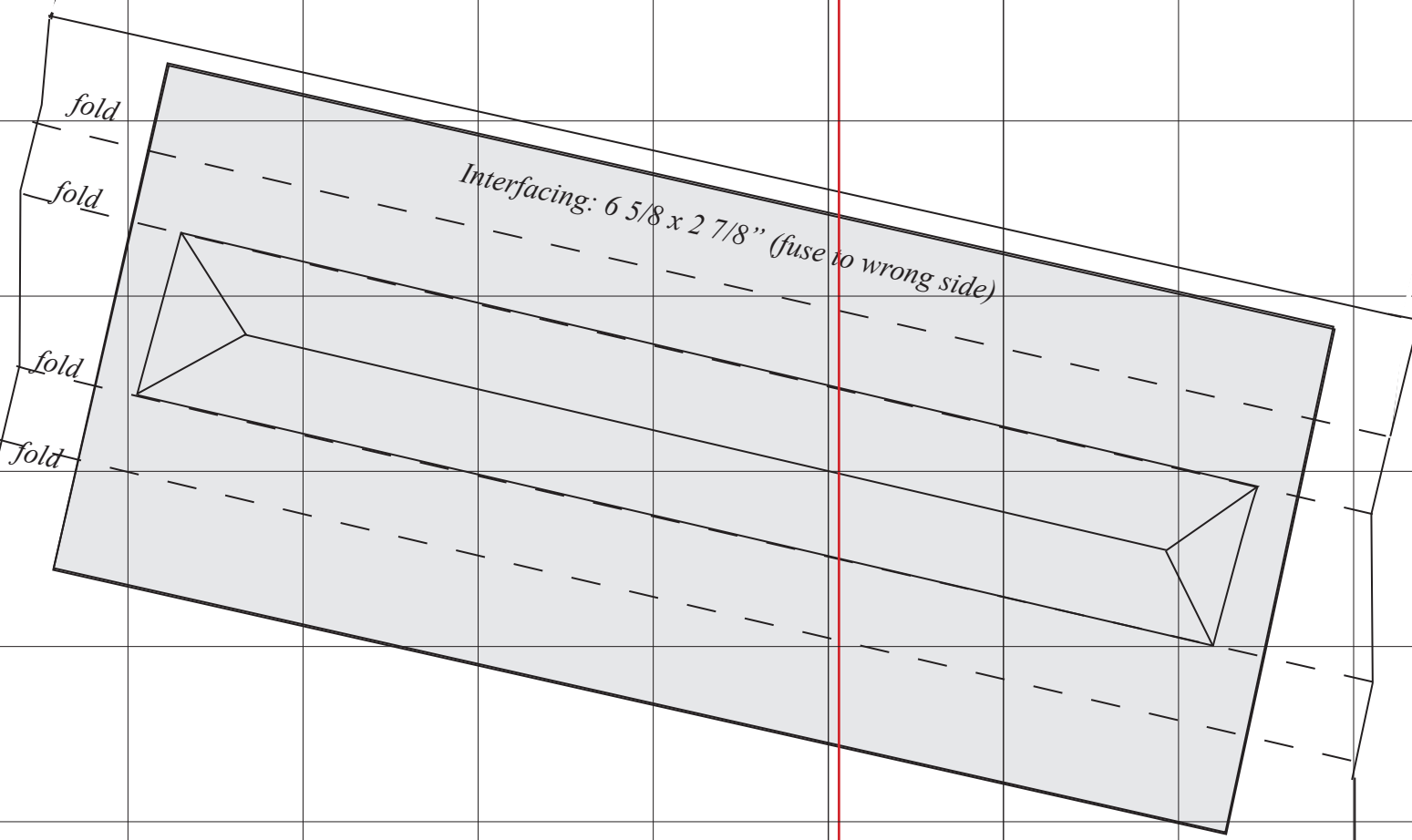
Sleeve
Page 6 of 7



7.88



Sleeve
Page 7 of 7



Wrap-front Cape
Optional pocket
Page 1 of 2

Wrap-front Cape
Optional pocket
Page 2 of 2

Interfacing: $6 \frac{5}{8} \times 2 \frac{7}{8}$ " (fuse to wrong side)

fold

fold

fold

