

Eared Chemo Hats - all patterns

© 2013 Carol Kimball

Please refer to PDF instruction page for assembly. Add details (eyes, noses) before sewing hat together.

Print two of each set of pages, tape each set together, flip half over and join for complete pattern



(no photo yet)



Floppy-eared Hound
Print pages 3-5

Yardage:
Child - 37" x 23 1/2"
Small Adult - 37" x 24"
Lg. Adult - 37" x 24 1/2"

Lop-eared Rabbit
Print pages 3-4, 6

Yardage:
Child - 37" x 23 1/2"
Small Adult - 37" x 24"
Lg. Adult - 37" x 24 1/2"

Mouse
Print pages 7-9

Yardage:
Child - 12 1/2" x 23 1/2"
Small Adult - 12 1/2" x 24"
Lg. Adult - 12 1/2" x 24 1/2"

Cat (photoshopped face)
Print pages 7-8, 10

Yardage:
Child - 12" x 23 1/2"
Small Adult - 12" x 24"
Lg. Adult - 12" x 24 1/2"



Owl

Print pages 7-8, 11

Yardage:
Child - 12" x 23 1/2"
Small Adult - 12" x 24"
Lg. Adult - 12" x 24 1/2"



Fox

Print pages 7-8, 15

Yardage:
Child - 12 1/2" x 23 1/2"
Small Adult - 12 1/2" x 24"
Lg. Adult - 12 1/2" x 24 1/2"



Horse (Donkey)

Print pages 7-8, 12
How to Make a Mane 13

Yardage:
Child - 15" x 23 1/2"
Small Adult - 15" x 24"
Lg. Adult - 15" x 24 1/2"



Bunny

Print pages 7-8, 14

Yardage:
Child - 16" x 23 1/2"
Small Adult - 16" x 24"
Lg. Adult - 16" x 24 1/2"

Suggested layouts for the floppy-eared hats are on Page 2.

© 2013 Carol Kimball

These patterns and instructions may be freely duplicated and used to sew these hats, as long as not for profit and as long as this attribution to me is kept.

www.carolkimball.net

	check your printer - 3" x 3"	

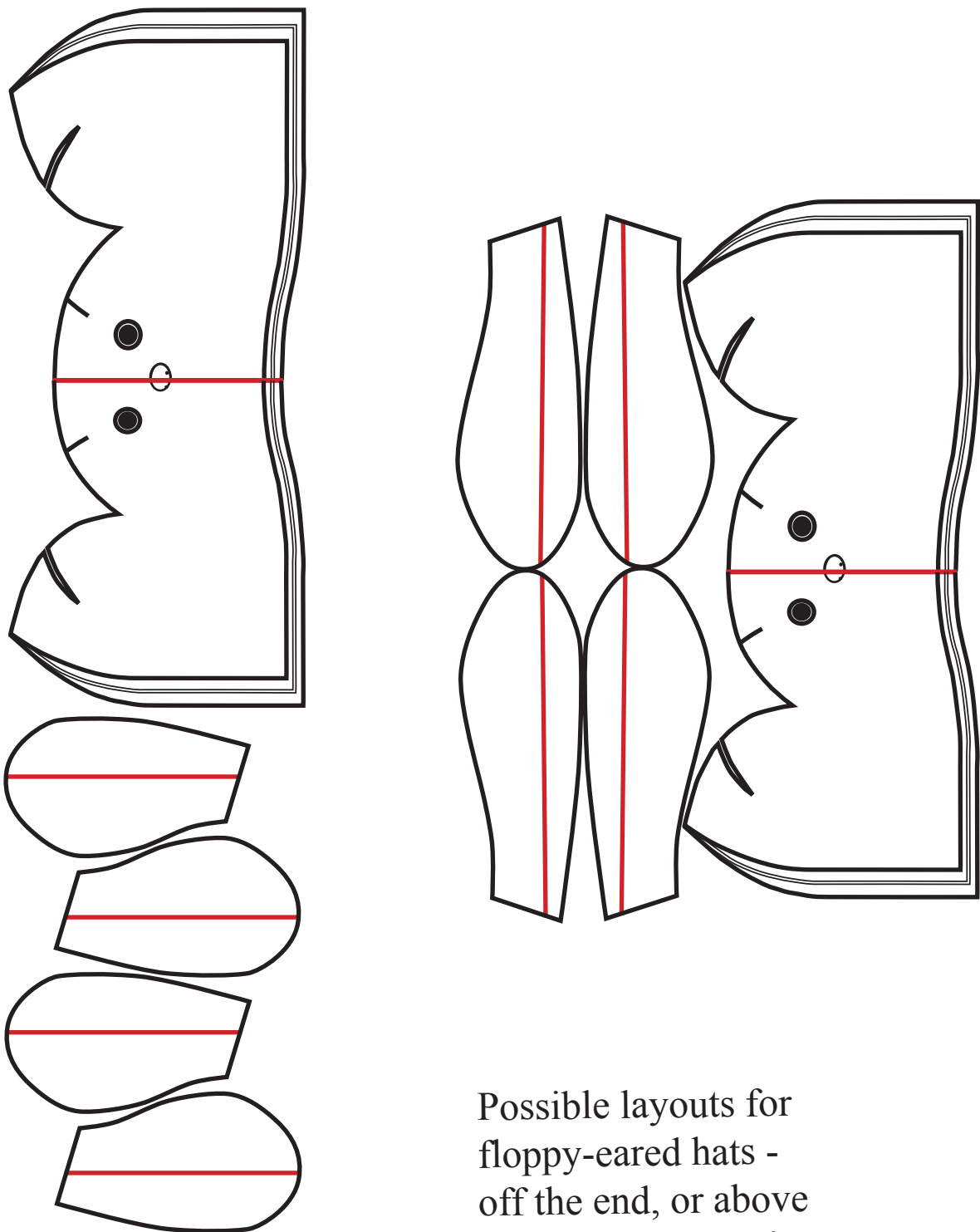
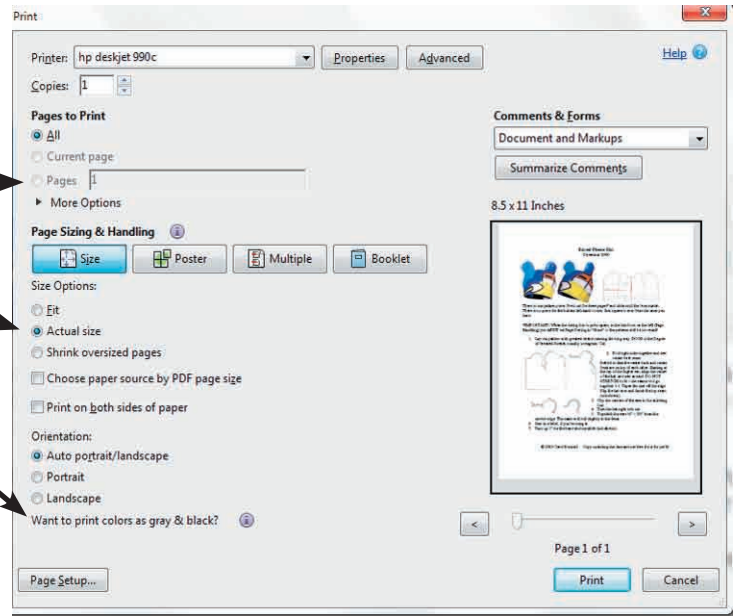
Your print dialog box will look something like this:

Three things to check:

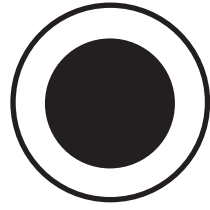
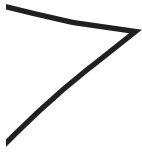
Which pages do you want to print?

Size Options - **MUST** be actual size!
(do not scale)

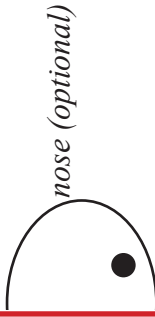
Print grayscale (if your printer supports it)



Possible layouts for floppy-eared hats - off the end, or above the main pattern piece.



eye (optional)



nose (optional)

Fleece Chemo Hat

Floppy-ears Base

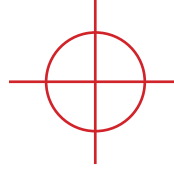
Print 2 sets, reverse half and join at center front

Cut one per hat

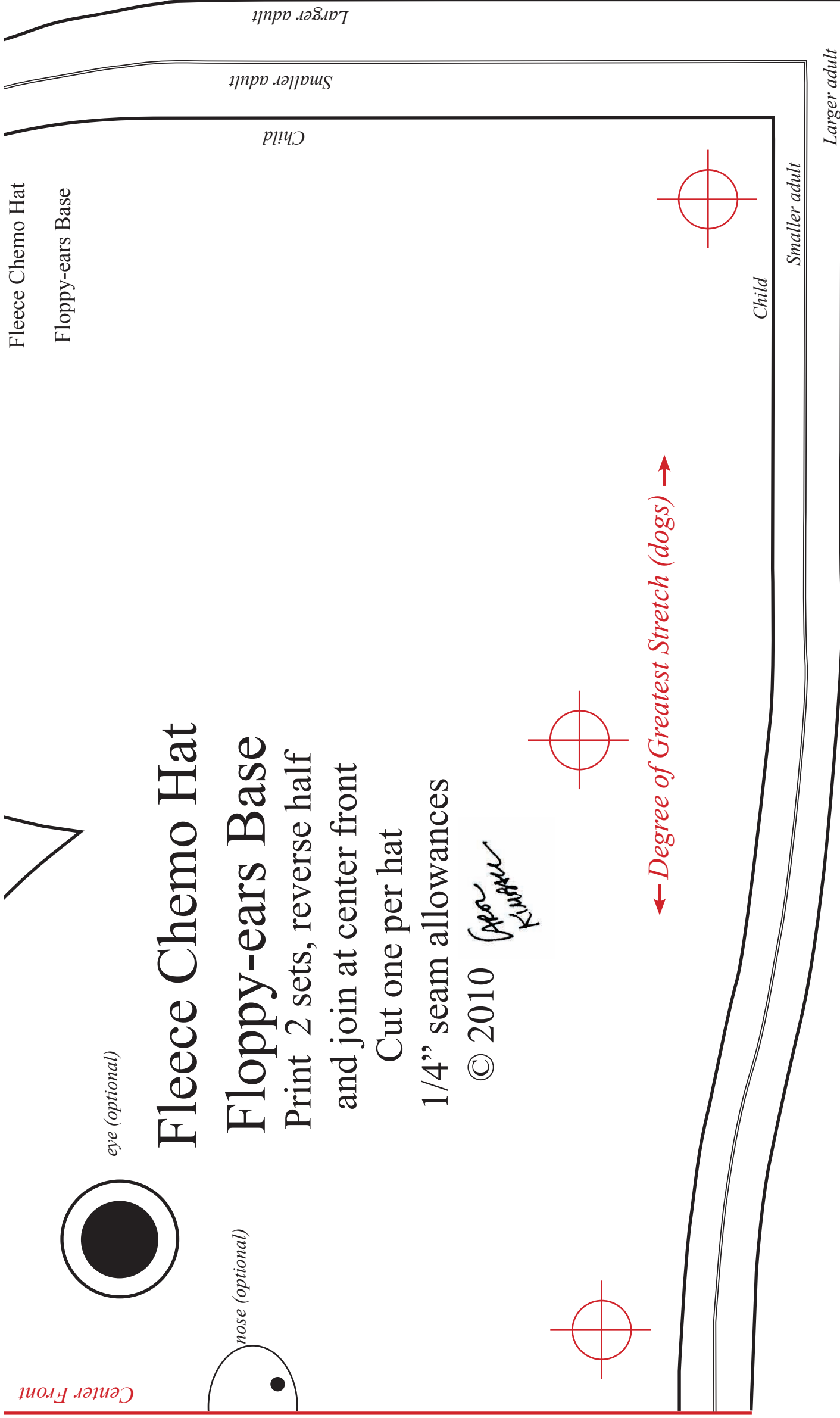
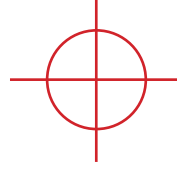
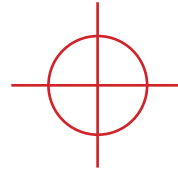
1/4" seam allowances

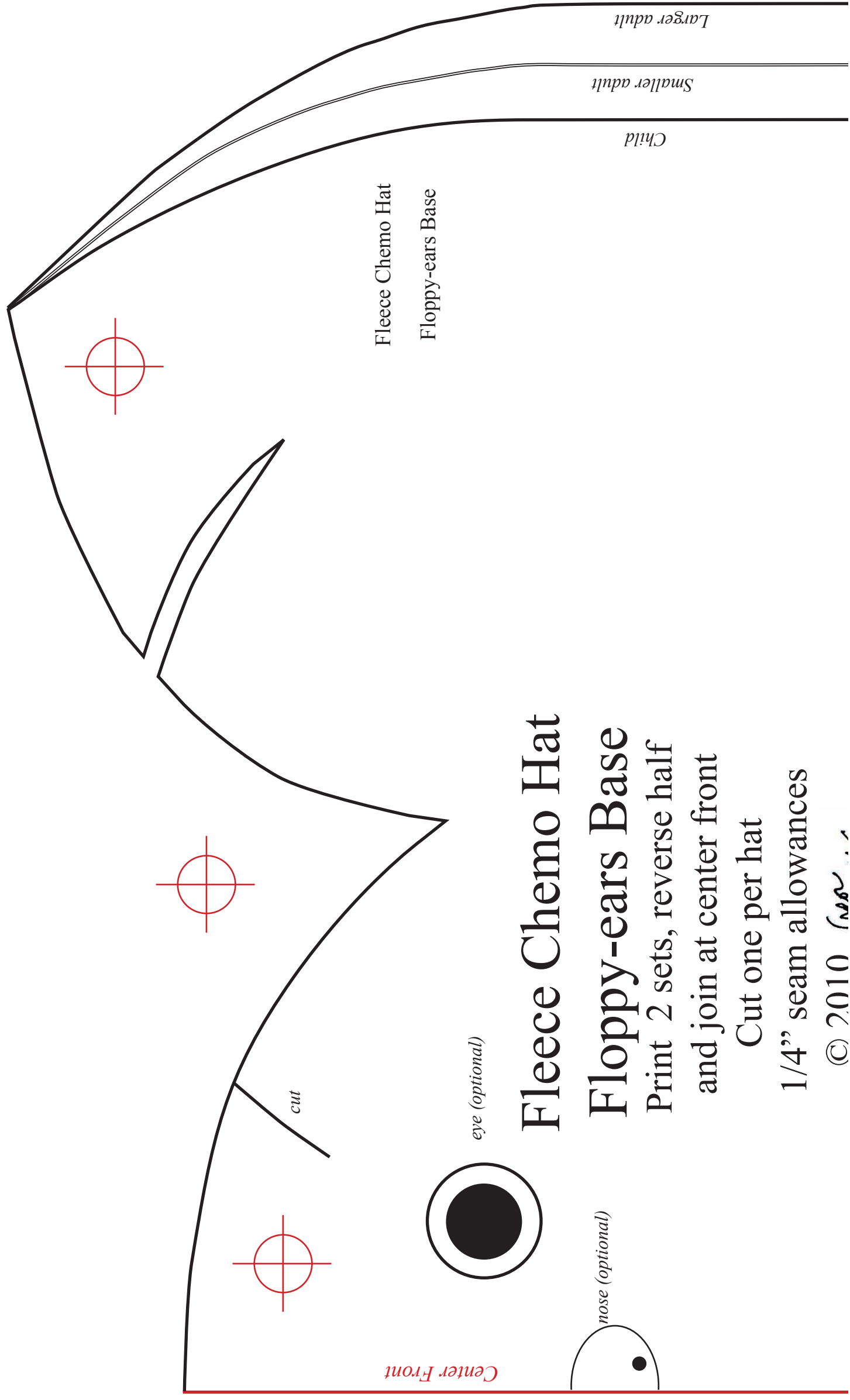
© 2010

*Step
Kimber*



↔ Degree of Greatest Stretch (dogs) →





Fleece Chemo Hat

Floppy-ears Base

Print 2 sets, reverse half
and join at center front

Cut one per hat

1/4" seam allowances

© 2010 Sew ...

Center Front

cut

eye (optional)

nose (optional)

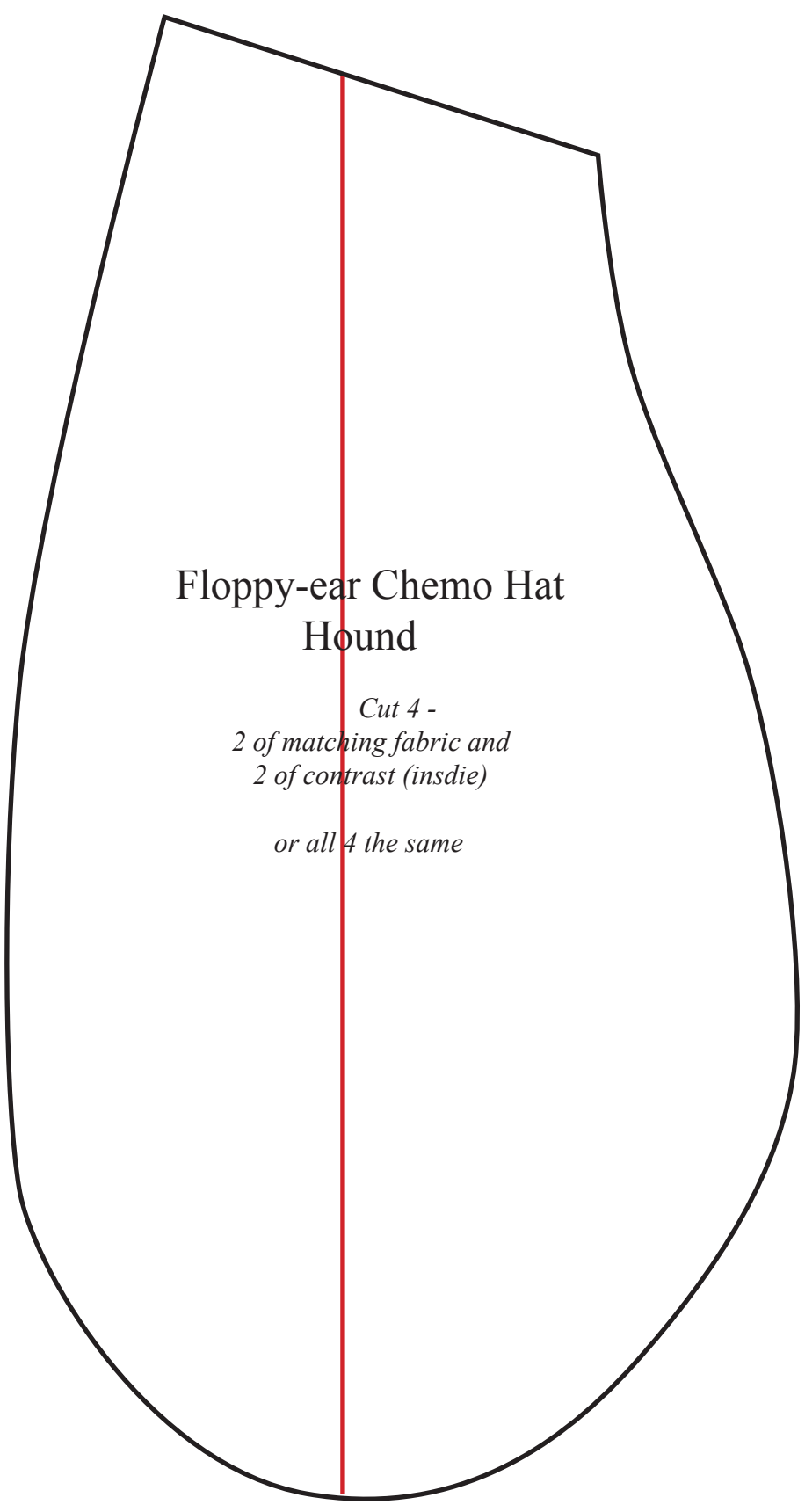
Fleece Chemo Hat

Floppy-ears Base

Child

Smaller adult

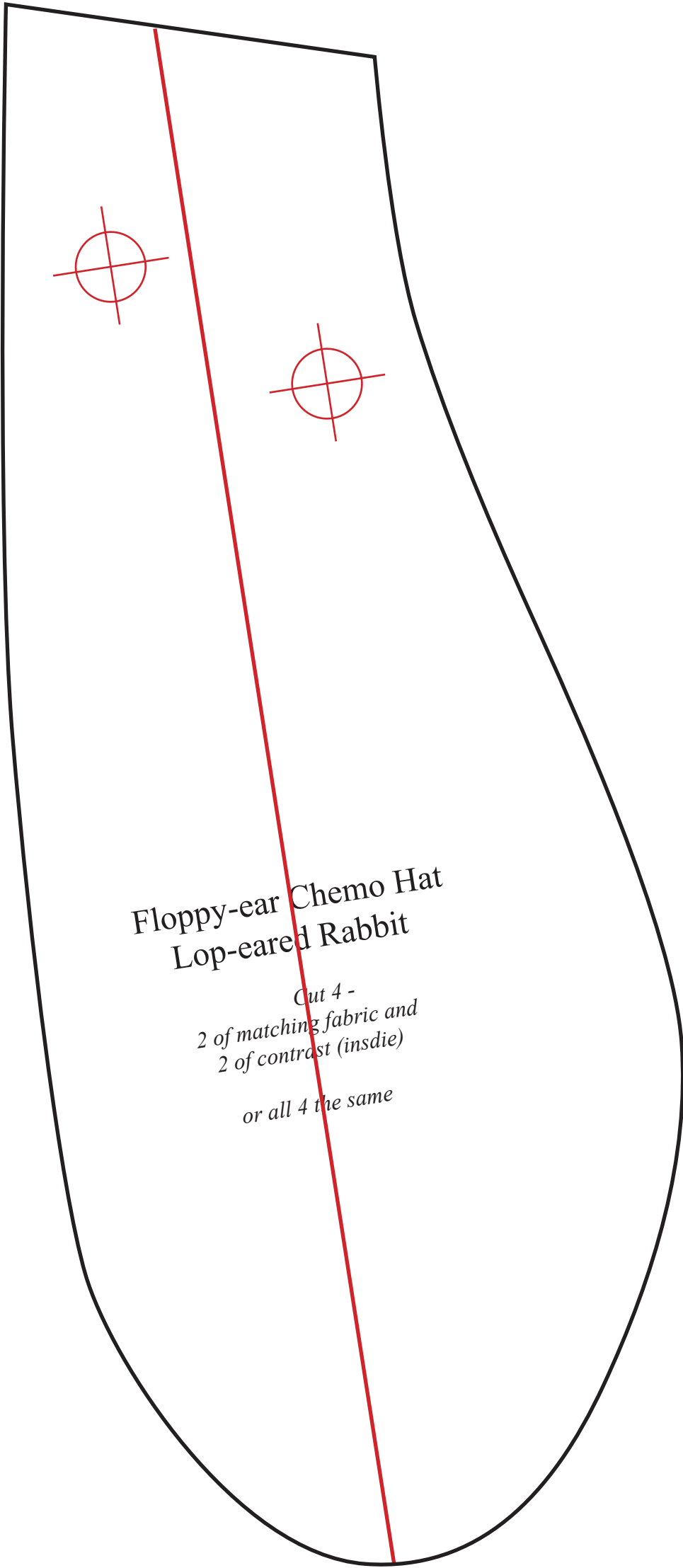
Larger adult



Floppy-ear Chemo Hat
Hound

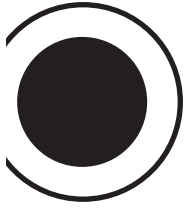
*Cut 4 -
2 of matching fabric and
2 of contrast (inside)*

or all 4 the same



Floppy-ear Chemo Hat
Lop-eared Rabbit

*Cut 4 -
2 of matching fabric and
2 of contrast (inside)
or all 4 the same*



center front

nose (optional)

Fleece Chemo Hat Integral Ears Base

Print 2 sets, reverse half
and join at center front
Cut one per hat
1/4" seam allowances

© 2010

*Ann
Kusner*



Child

Smaller Adult

Larger Adult

Child

Smaller Adult

Larger Adult

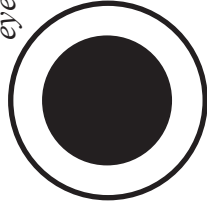


center front



nose (optional)

eye (optional)



Y



Fleece Chemo Hat Integral Ears Base

Print 2 sets, reverse half
and join at center front

Cut one per hat

1/4" seam allowances

© 2010

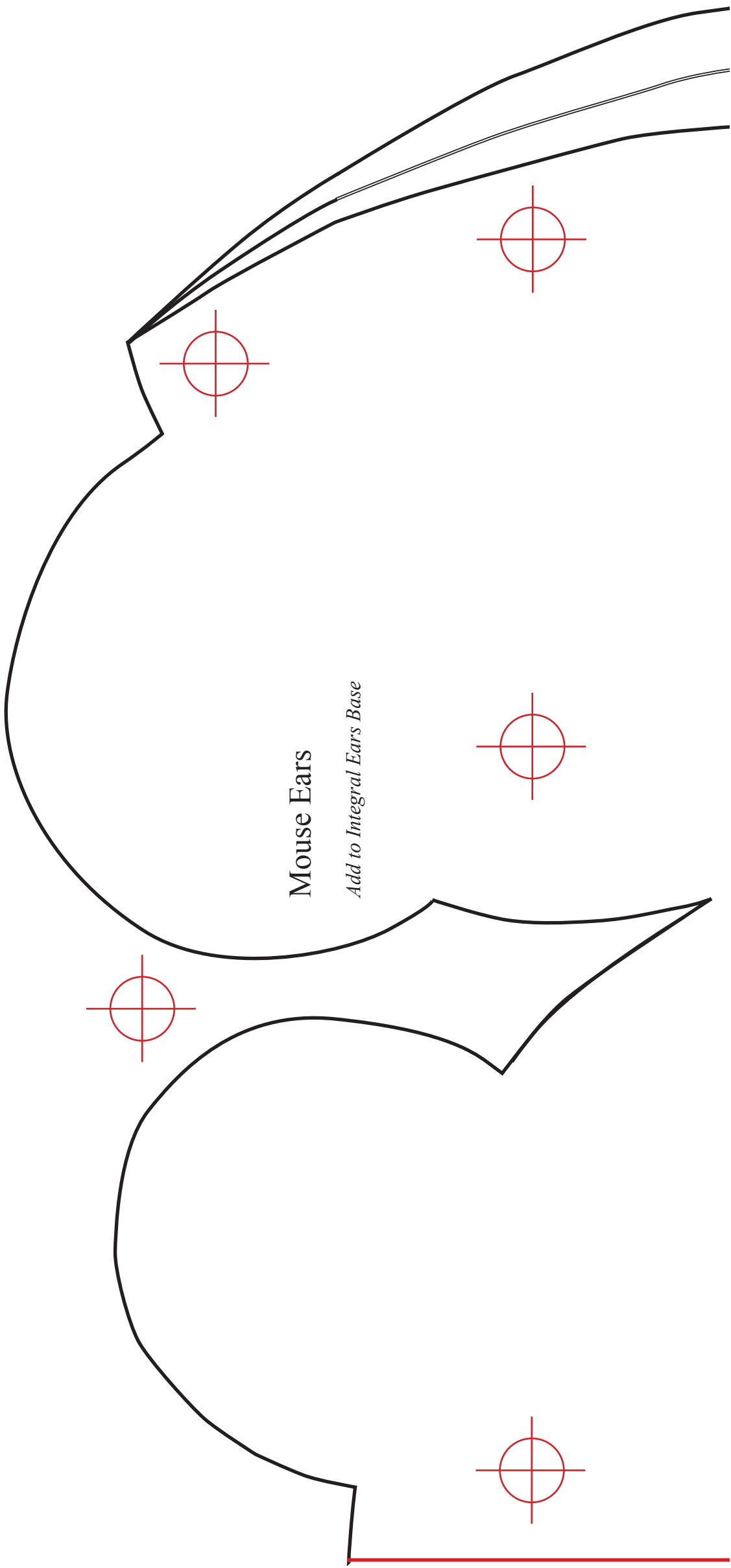
Alison Kimball



Child

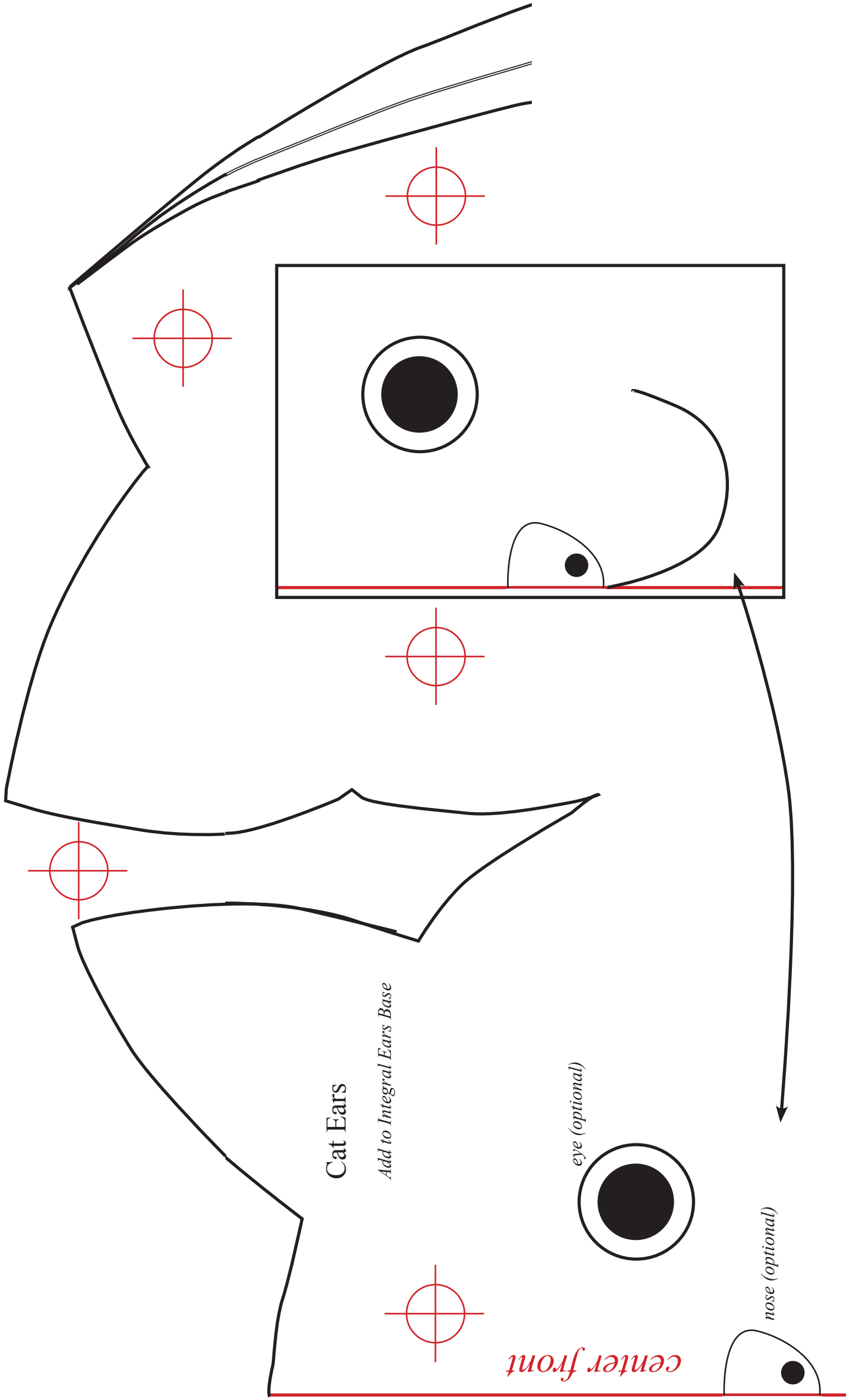
Smaller Adult

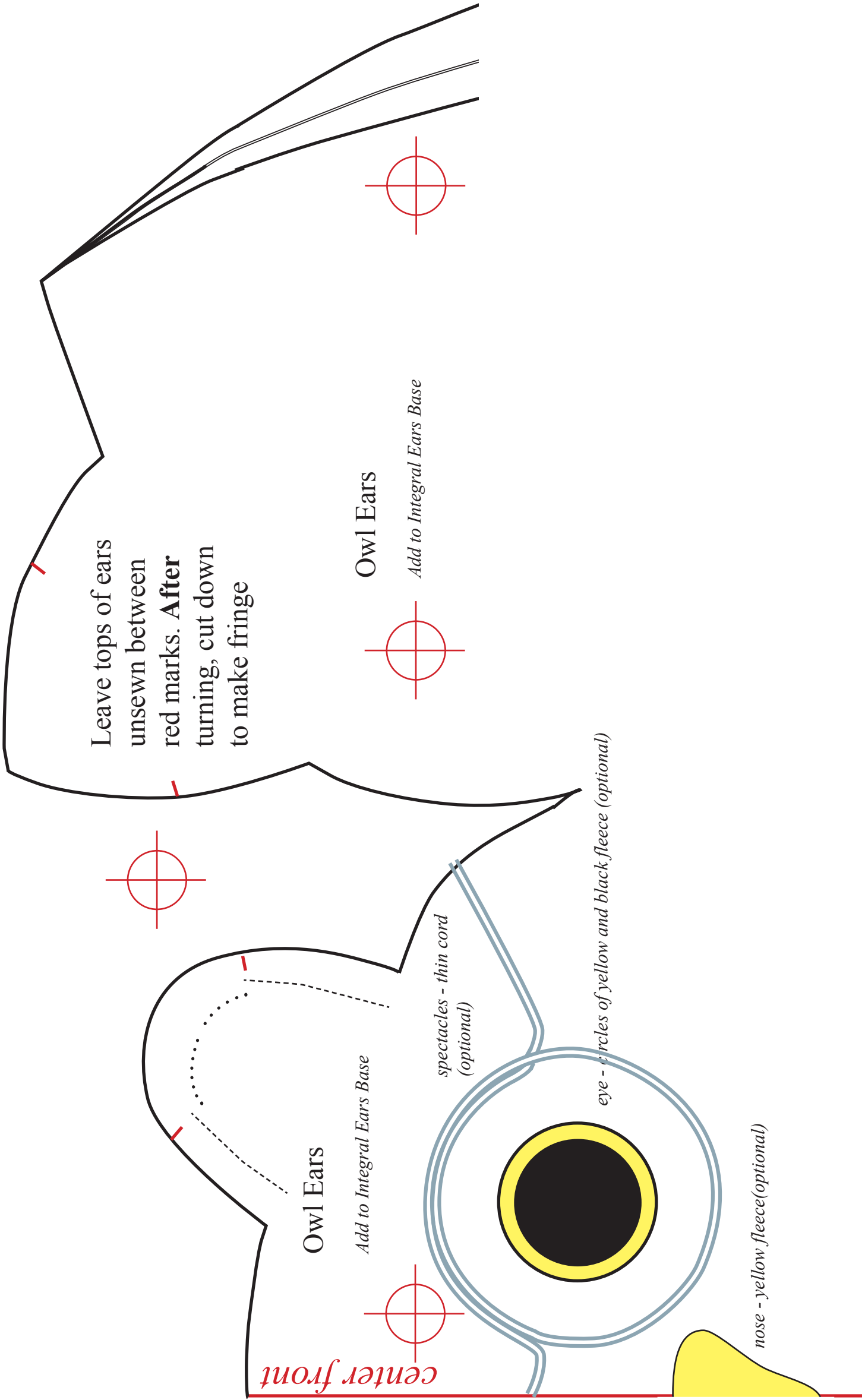
Larger Adult

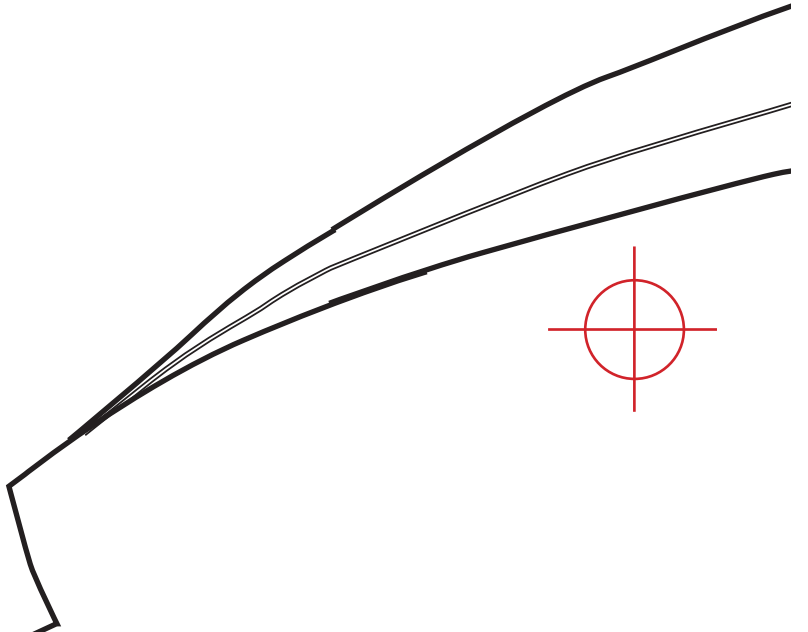
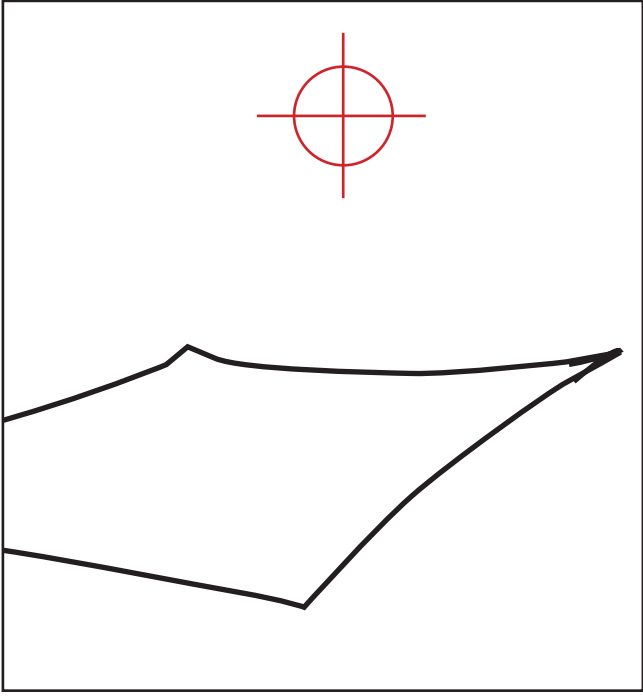


Mouse Ears

Add to Integral Ears Base

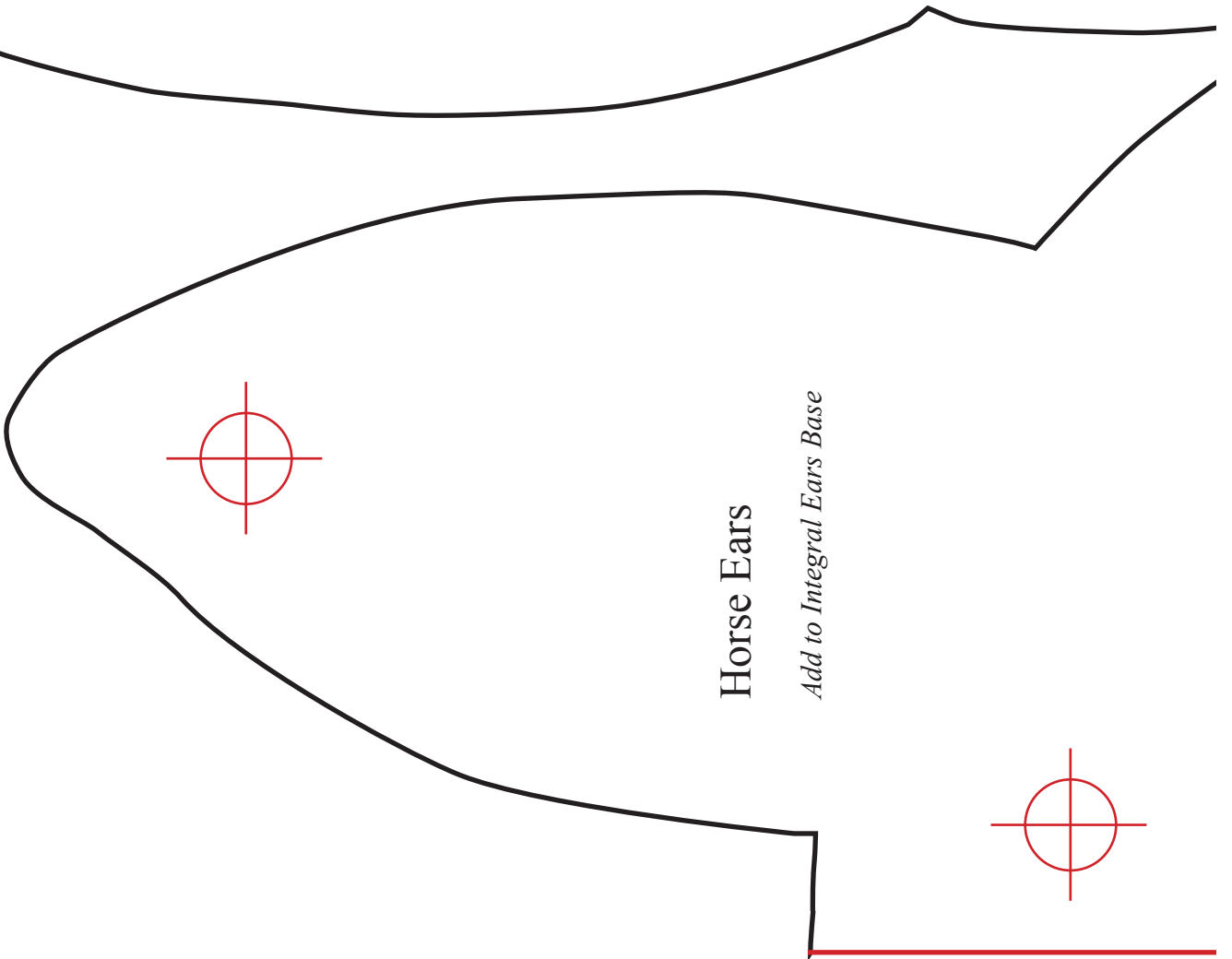
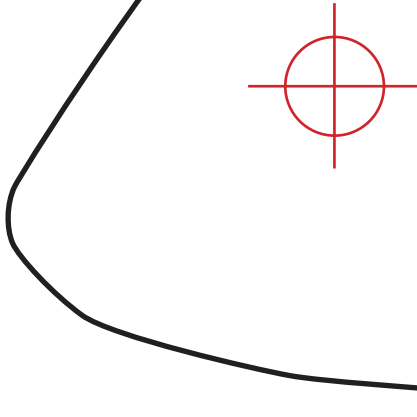






Horse Ears

Add to Integral Ears Base



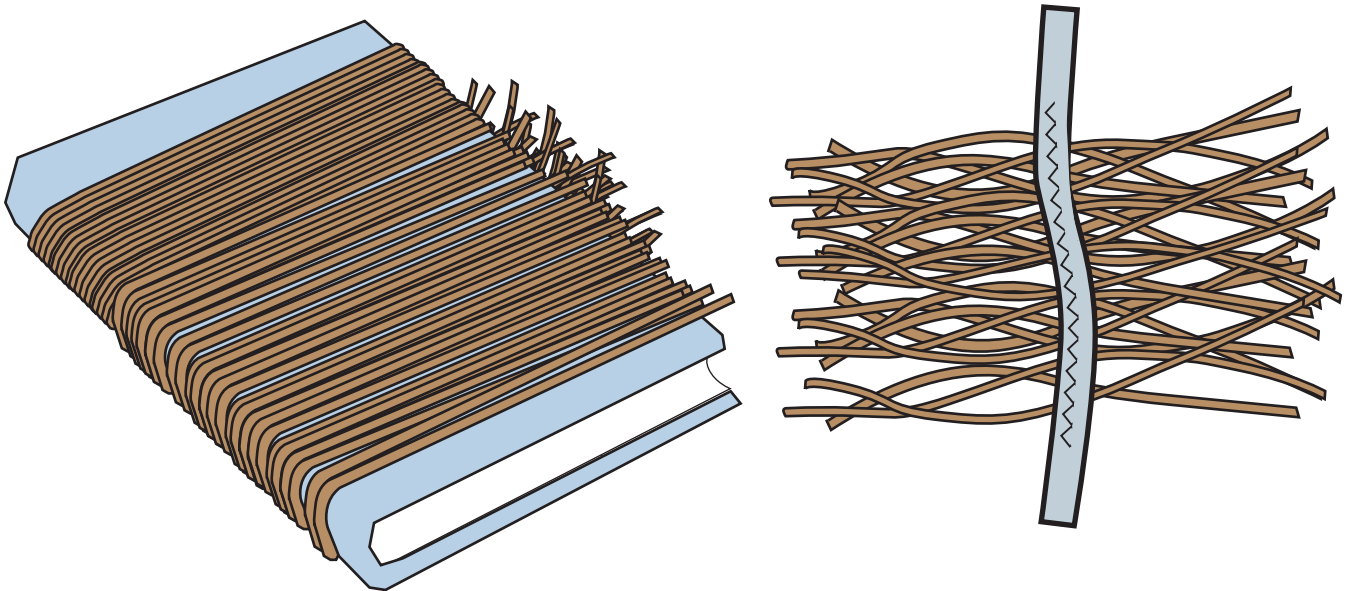
Horse Ears

Add to Integral Ears Base



How to add a Mane

A mane can be added between the ears and/or down the center back seam. Prepare the yarn before sewing the hat together.

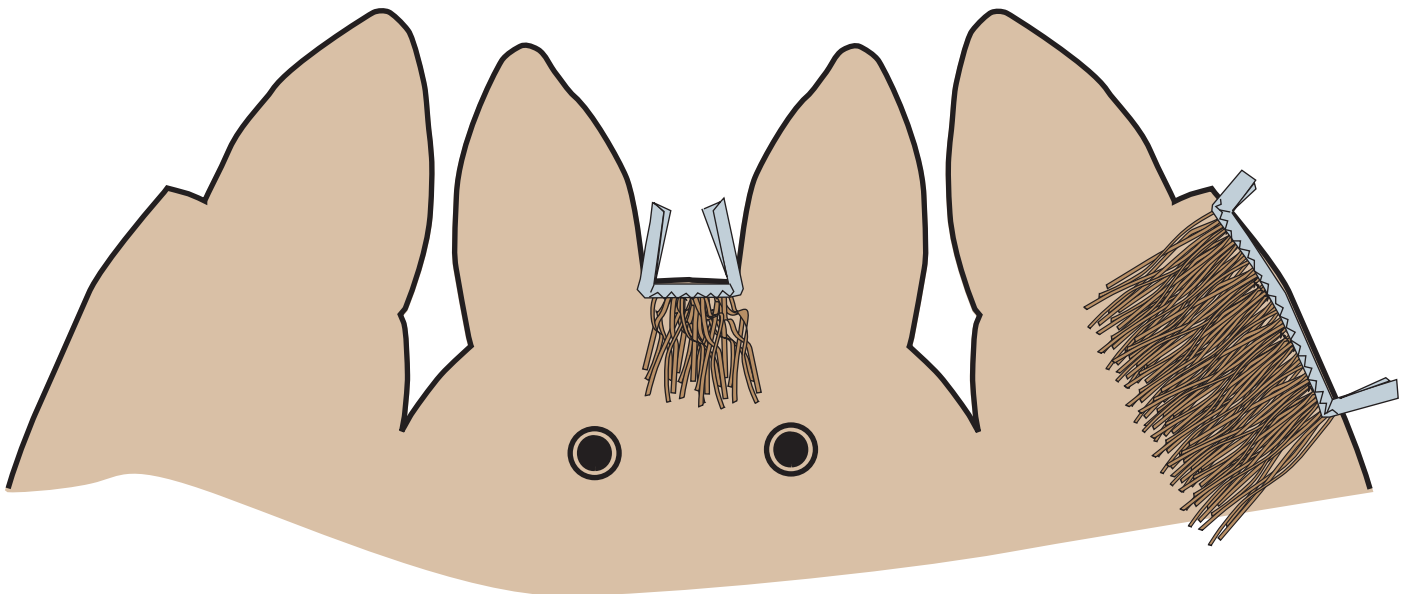


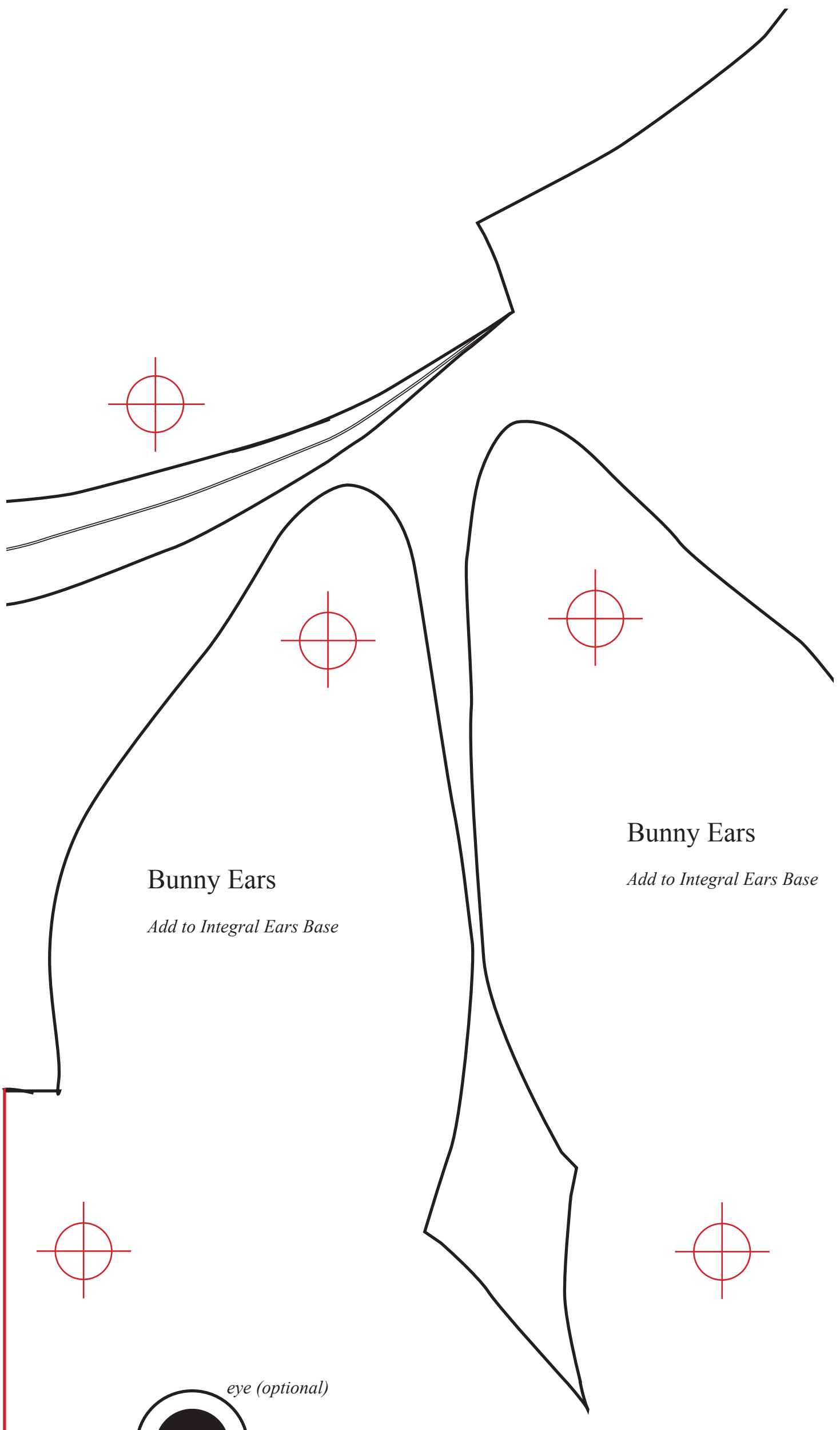
You will need scrap yarn and some kind of narrow tape or ribbon, which is sewn down the center of the pieces so you don't go crazy handling them.

Wind as much yarn as you want around something like a book, cut it to length, put the ribbon over it and zigzag down the center of the strip. The yarn pieces will be folded back on themselves, so don't get them too dense.

Fold the tape together so that the yarn is all on one side. Baste at the edge of the fabric, folding the ends of the tape out of the way as shown below.

Take your time sewing over the bumpy parts, and carefully clip through all layers into the corners as shown in the instructions so that the corners will turn neatly.





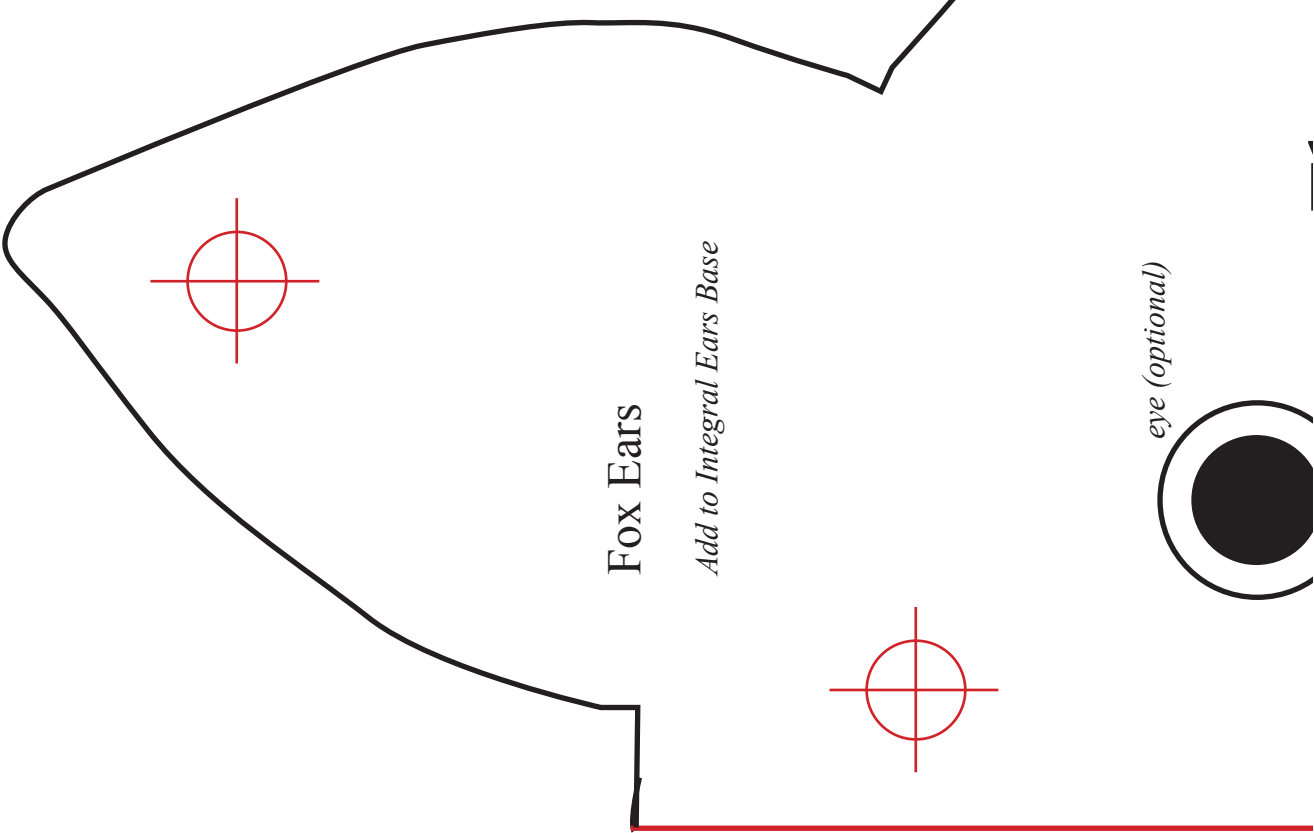
Bunny Ears
Add to Integral Ears Base

Bunny Ears
Add to Integral Ears Base

eye (optional)

Fox Ears

Add to Integral Ears Base



Fox Ears

Add to Integral Ears Base

