

Eared Chemo Hats - all patterns

© 2013 Carol Kimball

Please refer to PDF instruction page for assembly. Add details (eyes, noses) before sewing hat together.

Print two of each set of pages, tape each set together, flip half over and join for complete pattern



Floppy-eared Hound
Print pages 3-6

Yardage:

Child - 37" x 23 1/2"

Small Adult - 37" x 24"

Lg. Adult - 37" x 24 1/2"

(no photo yet)



Mouse

Print pages 8-11

Yardage:

Child - 12 1/2" x 23 1/2"

Small Adult - 12 1/2" x 24"

Lg. Adult - 12 1/2" x 24 1/2"



Cat (photoshopped face)

Print pages 8-9, 12-13

Yardage:

Child - 12" x 23 1/2"

Small Adult - 12" x 24"

Lg. Adult - 12" x 24 1/2"



Owl

Print pages 8-9, 14-15

Yardage:

Child - 12" x 23 1/2"

Small Adult - 12" x 24"

Lg. Adult - 12" x 24 1/2"



Fox

Print pages 8-9, 21-22

Yardage:

Child - 12 1/2" x 23 1/2"

Small Adult - 12 1/2" x 24"

Lg. Adult - 12 1/2" x 24 1/2"



Horse (Donkey)

Print pages 8-9, 16-17

How to Make a Mane 18

Yardage:

Child - 15" x 23 1/2"

Small Adult - 15" x 24"

Lg. Adult - 15" x 24 1/2"



Bunny

Print pages 8-9, 19-20

Yardage:

Child - 16" x 23 1/2"

Small Adult - 16" x 24"

Lg. Adult - 16" x 24 1/2"

Suggested layouts for the floppy-eared hats are on Page 23

© 2013 Carol Kimball

These patterns and instructions may be freely duplicated and used to sew these hats, as long as not for profit and as long as this attribution to me is kept.

www.carolkimball.net

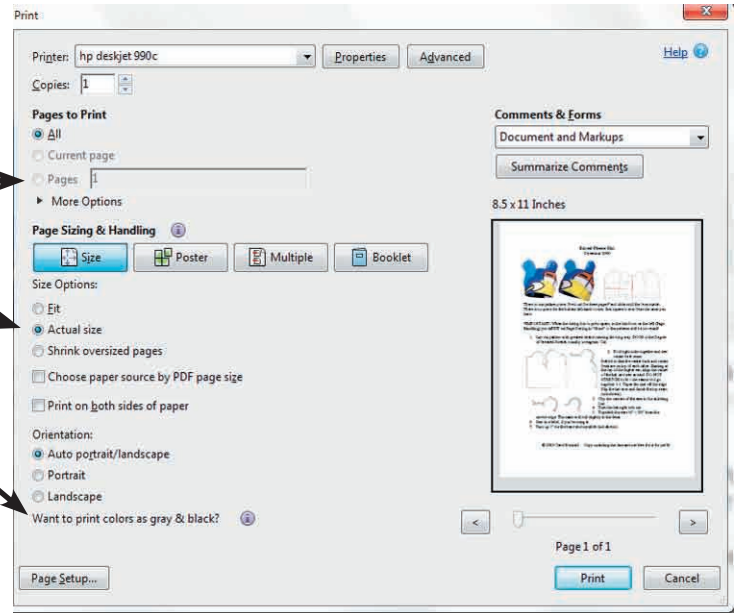
Your print dialog box will look something like this:

Three things to check:

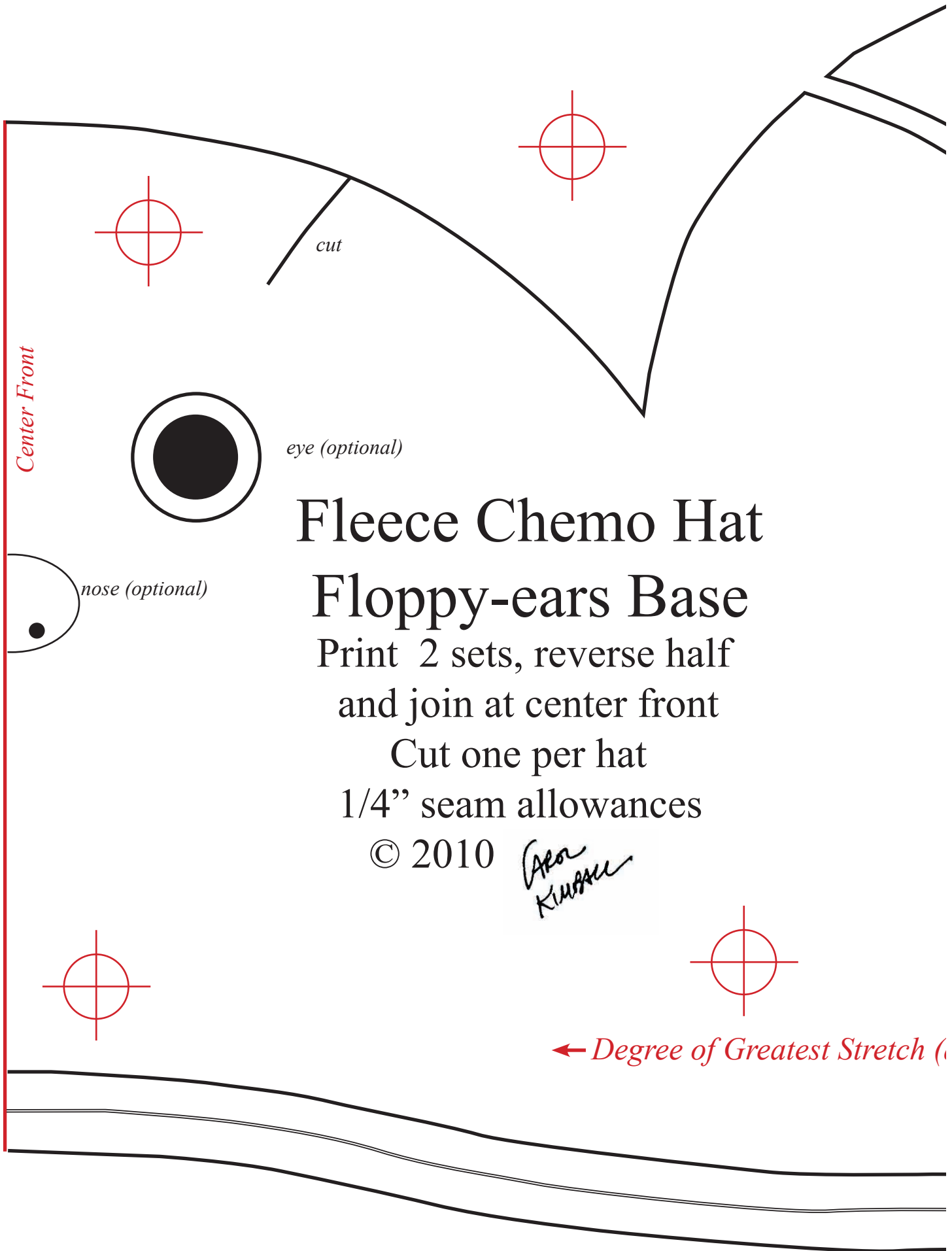
Which pages do you want to print?

Size Options - **MUST** be actual size!
(do not scale)

Print grayscale (if your printer supports it)



	<i>check your printer - 3" x 3"</i>	



Center Front

cut

eye (optional)

nose (optional)

Fleece Chemo Hat Floppy-ears Base

Print 2 sets, reverse half
and join at center front

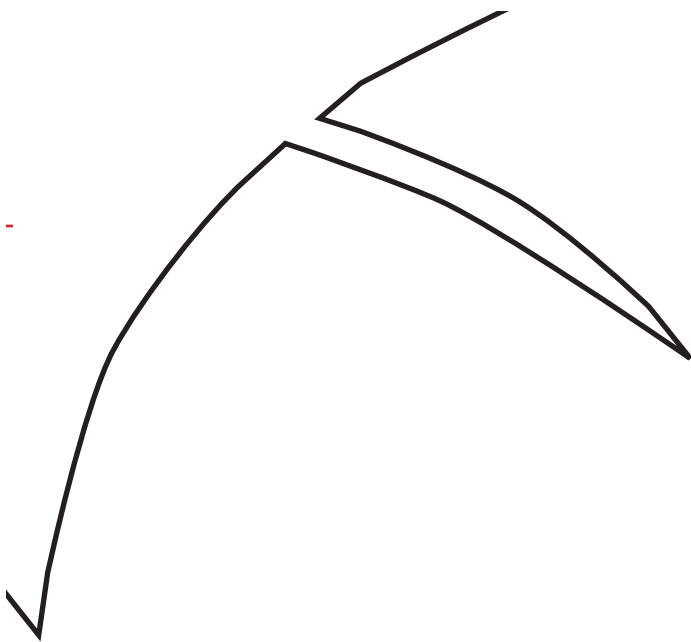
Cut one per hat

1/4" seam allowances

© 2010

Ala Kussak

← Degree of Greatest Stretch (1/4" seam allowances)



Fleece Chemo Hat
Floppy-ears Base

o Hat

Base

se half

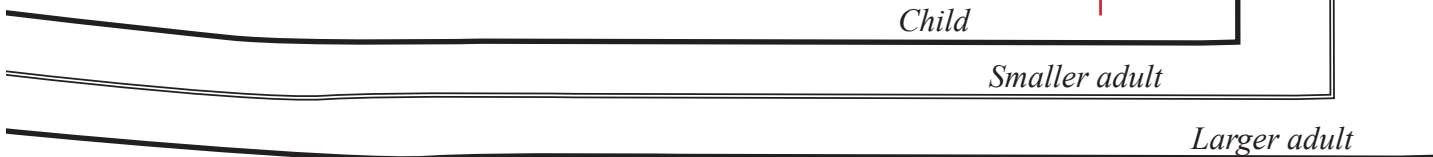
: front

at

nces



egree of Greatest Stretch (dogs) →



Child

Smaller adult

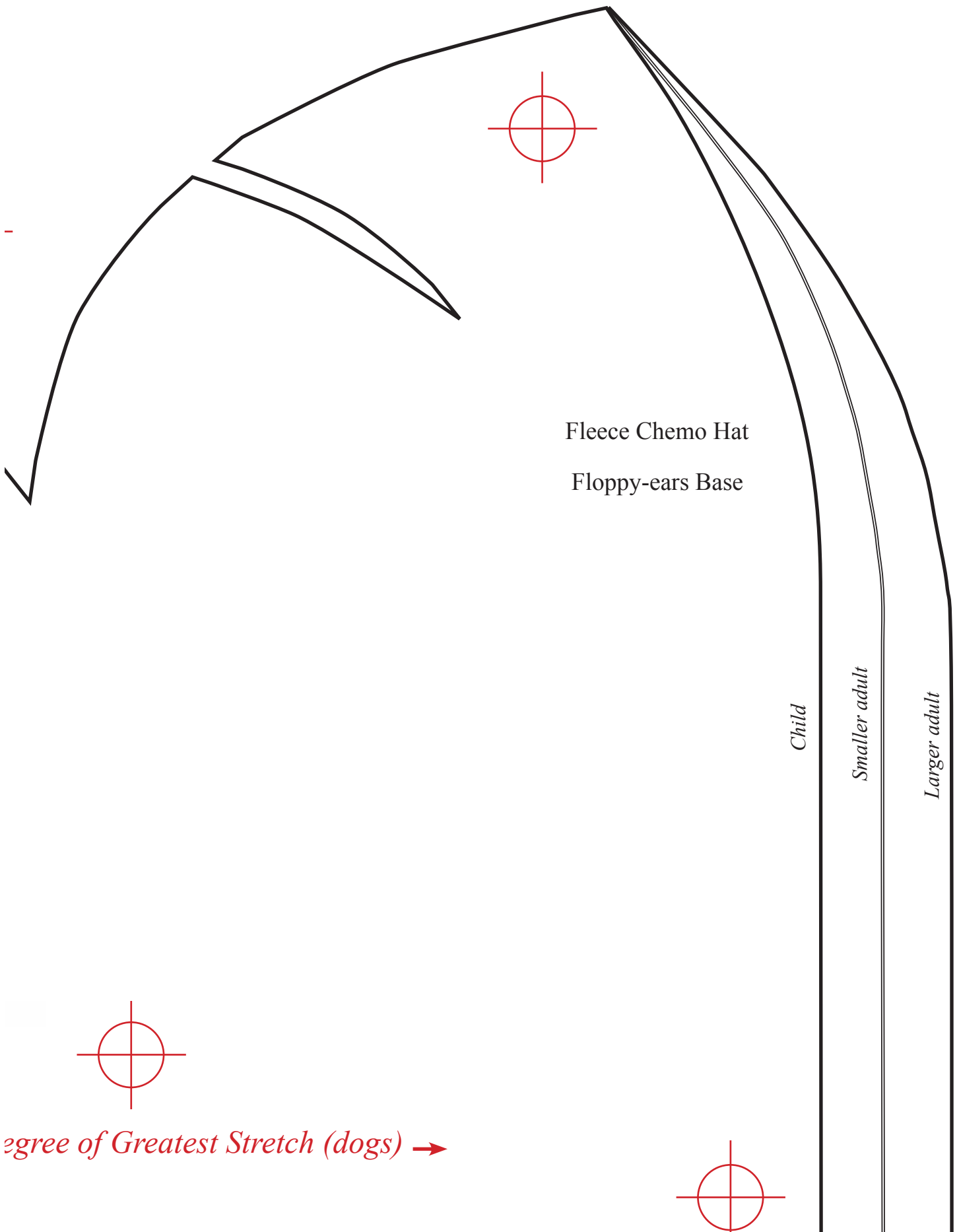
Larger adult

Child

Smaller adult

Larger adult





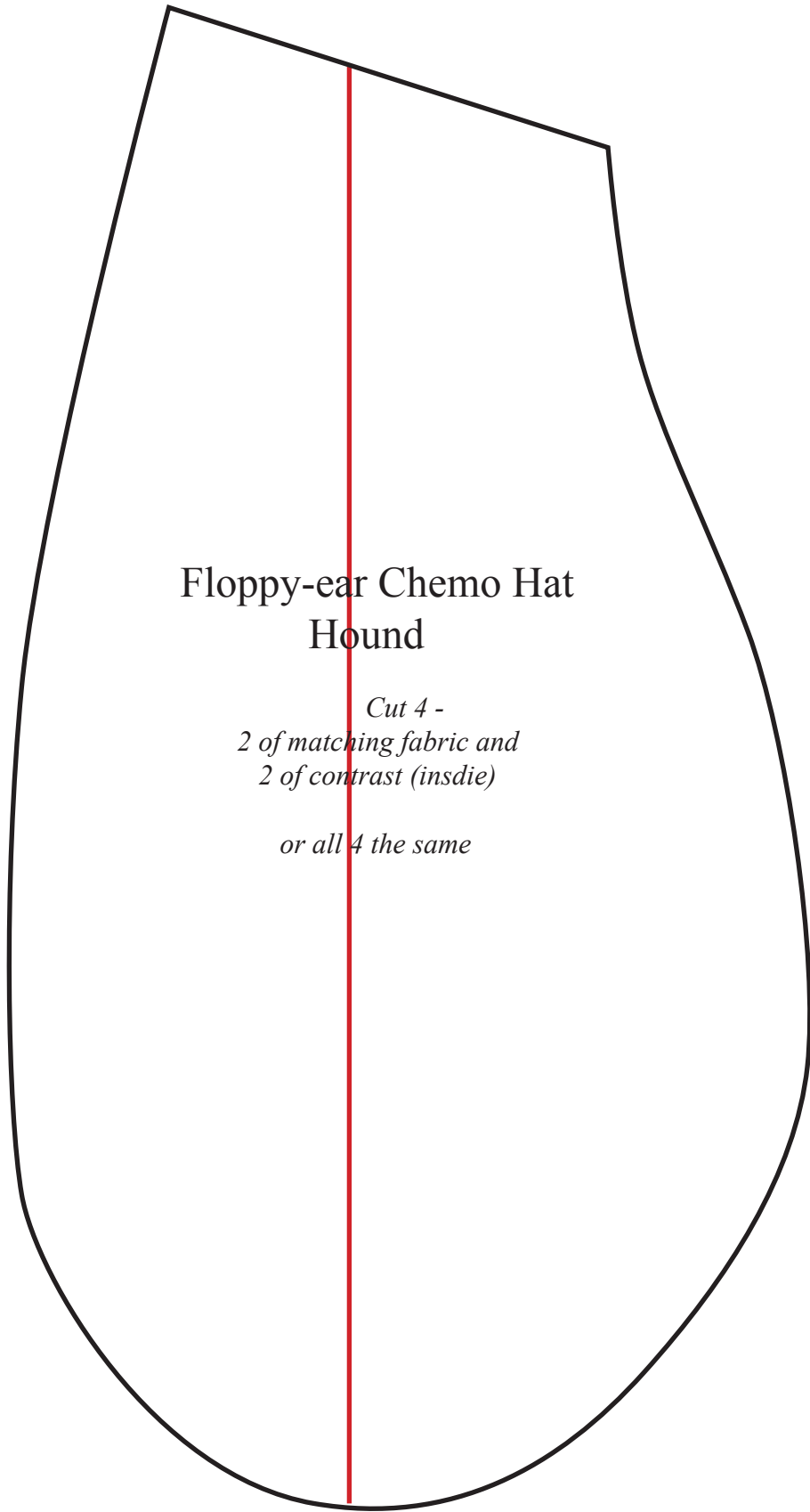
Fleece Chemo Hat
Floppy-ears Base

Child

Smaller adult

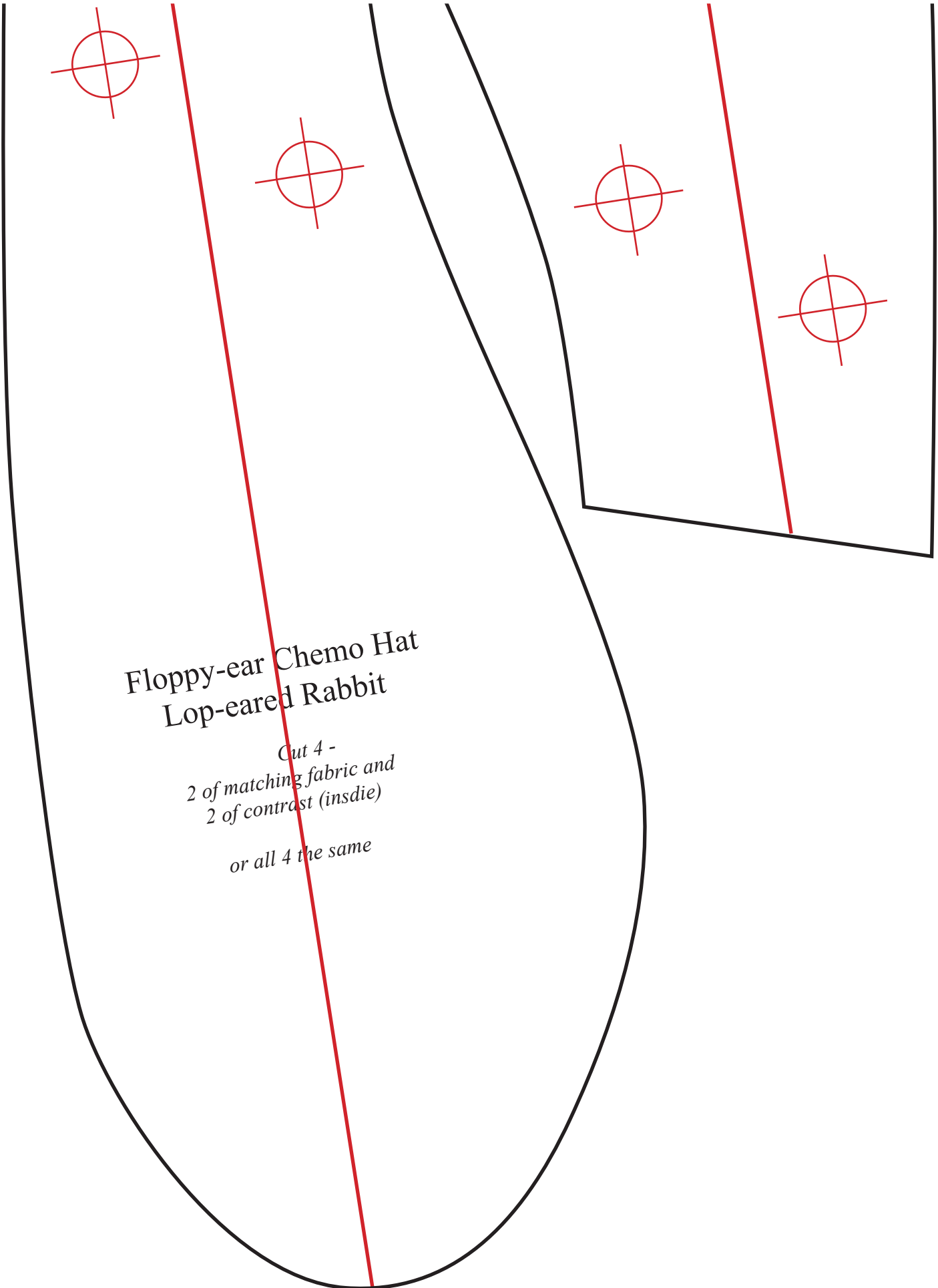
Larger adult

Degree of Greatest Stretch (dogs) →



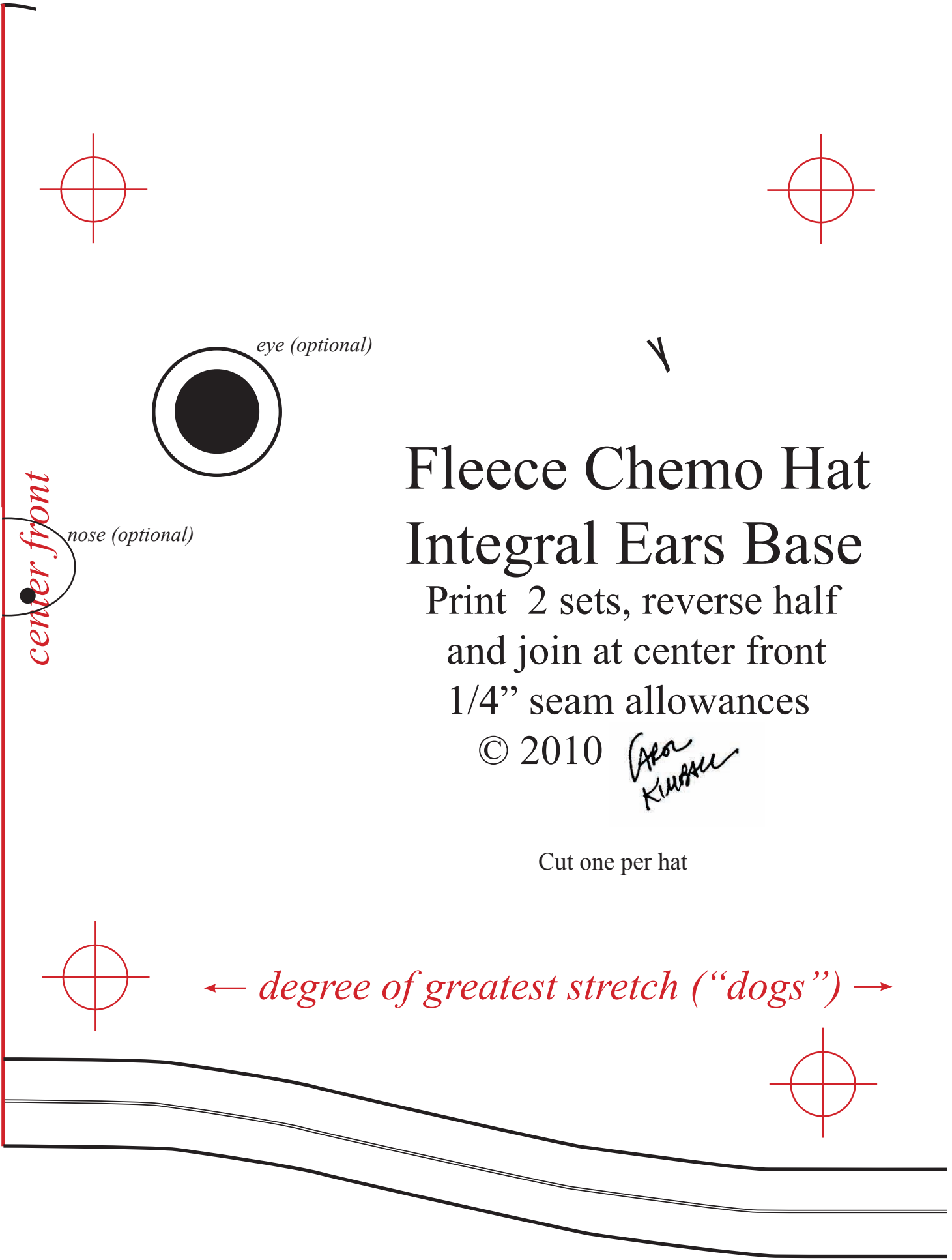
Floppy-ear Chemo Hat
Hound

*Cut 4 -
2 of matching fabric and
2 of contrast (inside)
or all 4 the same*



**Floppy-ear Chemo Hat
Lop-eared Rabbit**

*Cut 4 -
2 of matching fabric and
2 of contrast (insdie)
or all 4 the same*



Fleece Chemo Hat Integral Ears Base

Print 2 sets, reverse half
and join at center front
1/4" seam allowances

© 2010 *Aron Kussner*

Cut one per hat



Y

rimo Hat

ears Base

reverse half

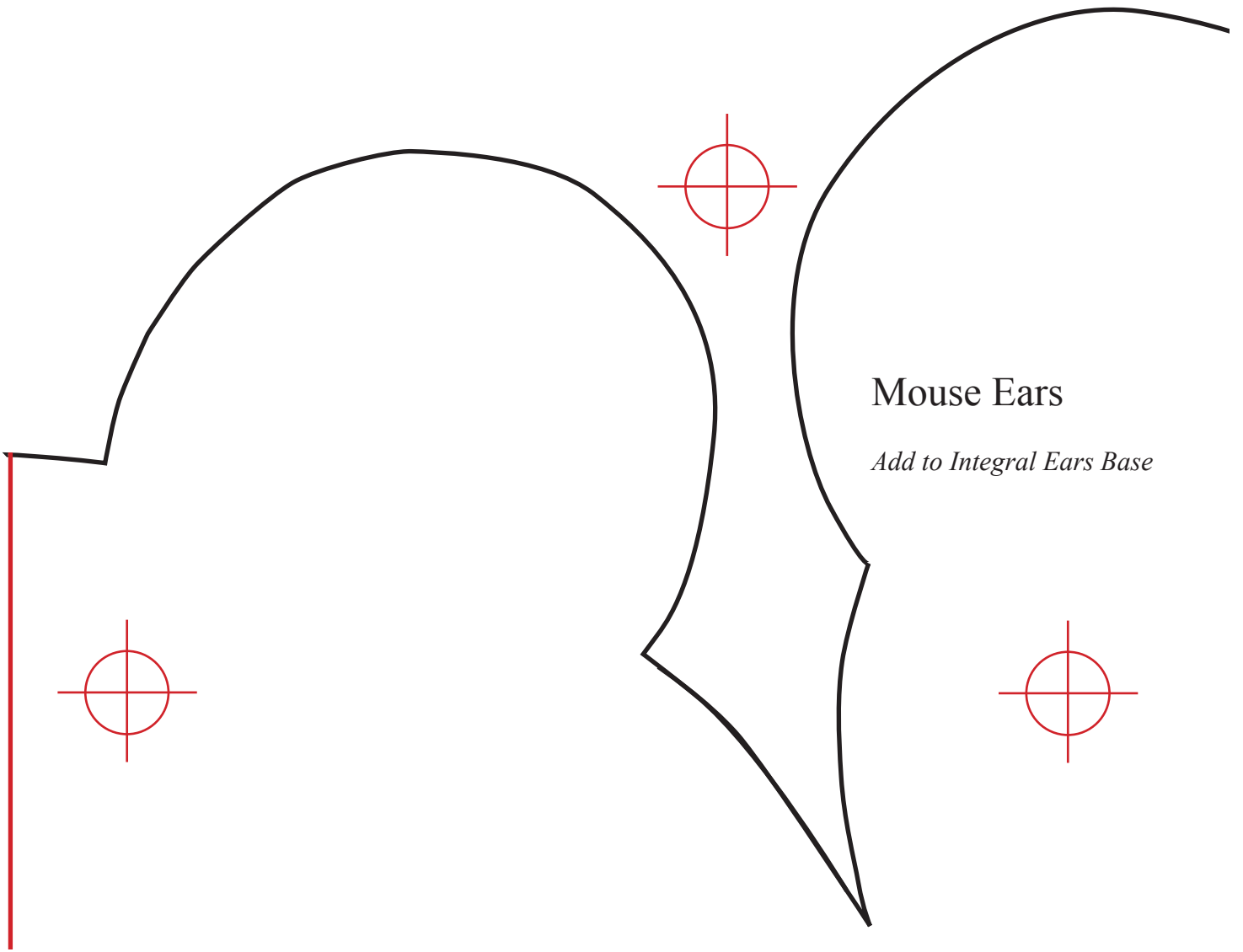
center front

allowances

*for
KURALL*

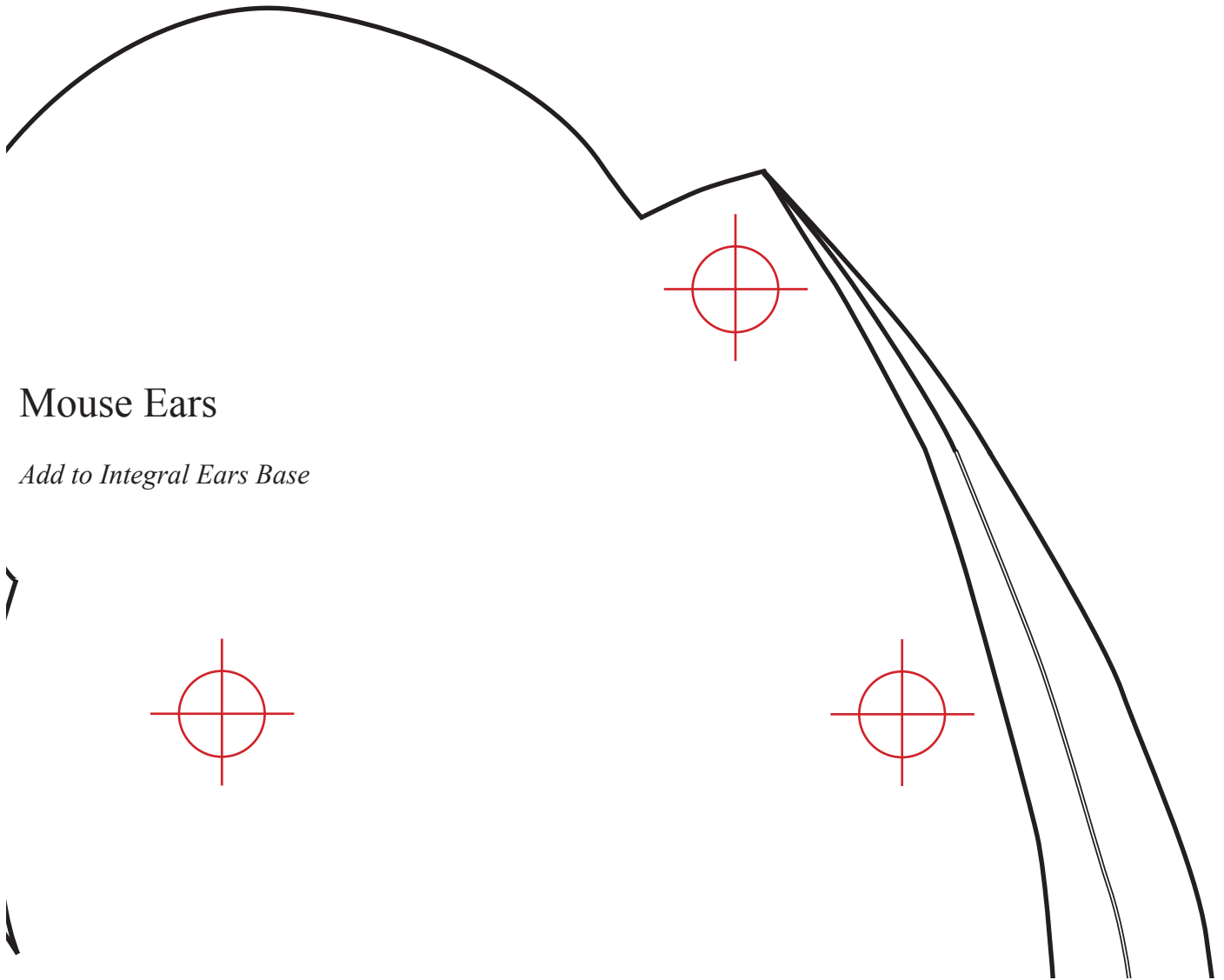
ch ("dogs") →





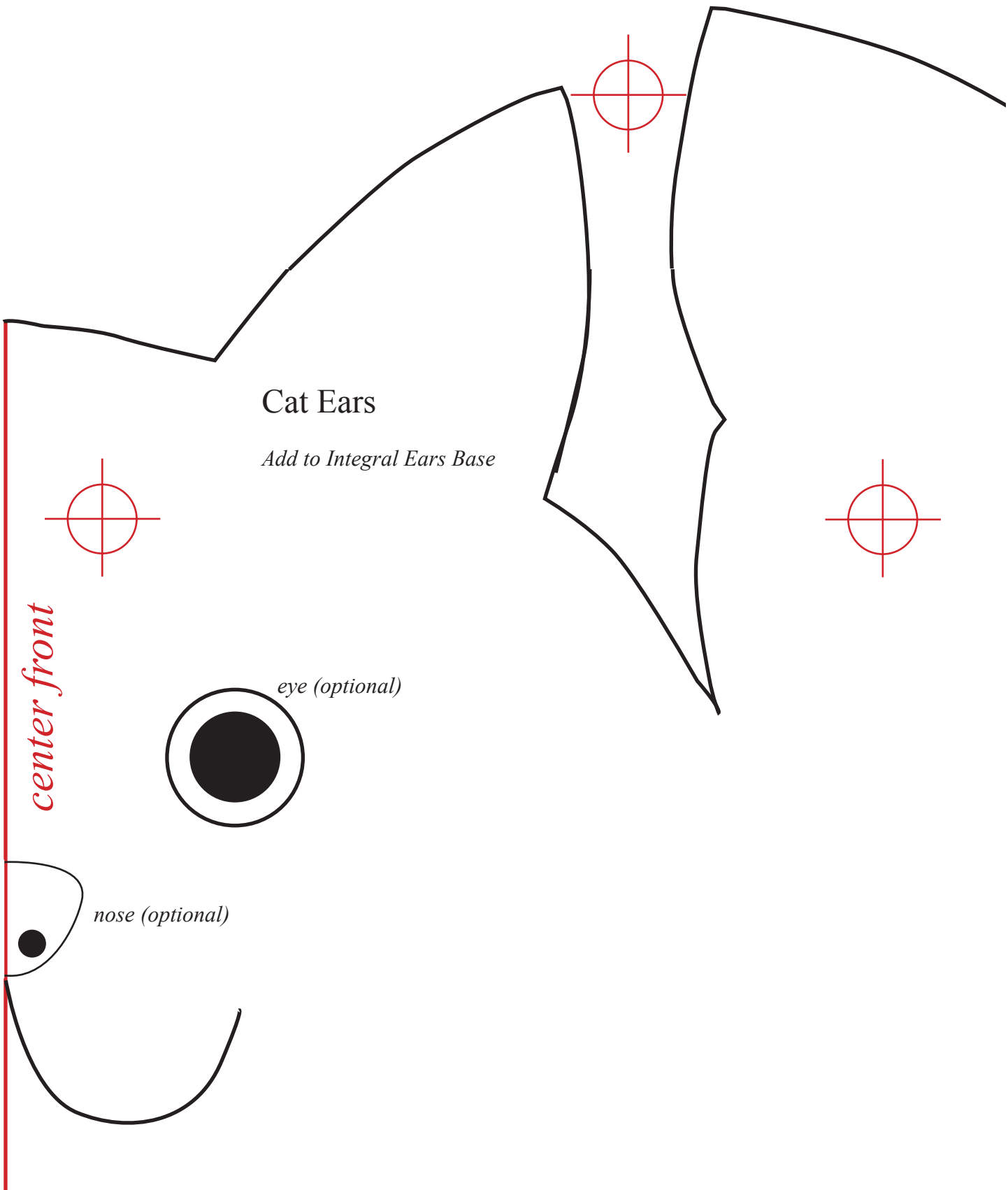
Mouse Ears

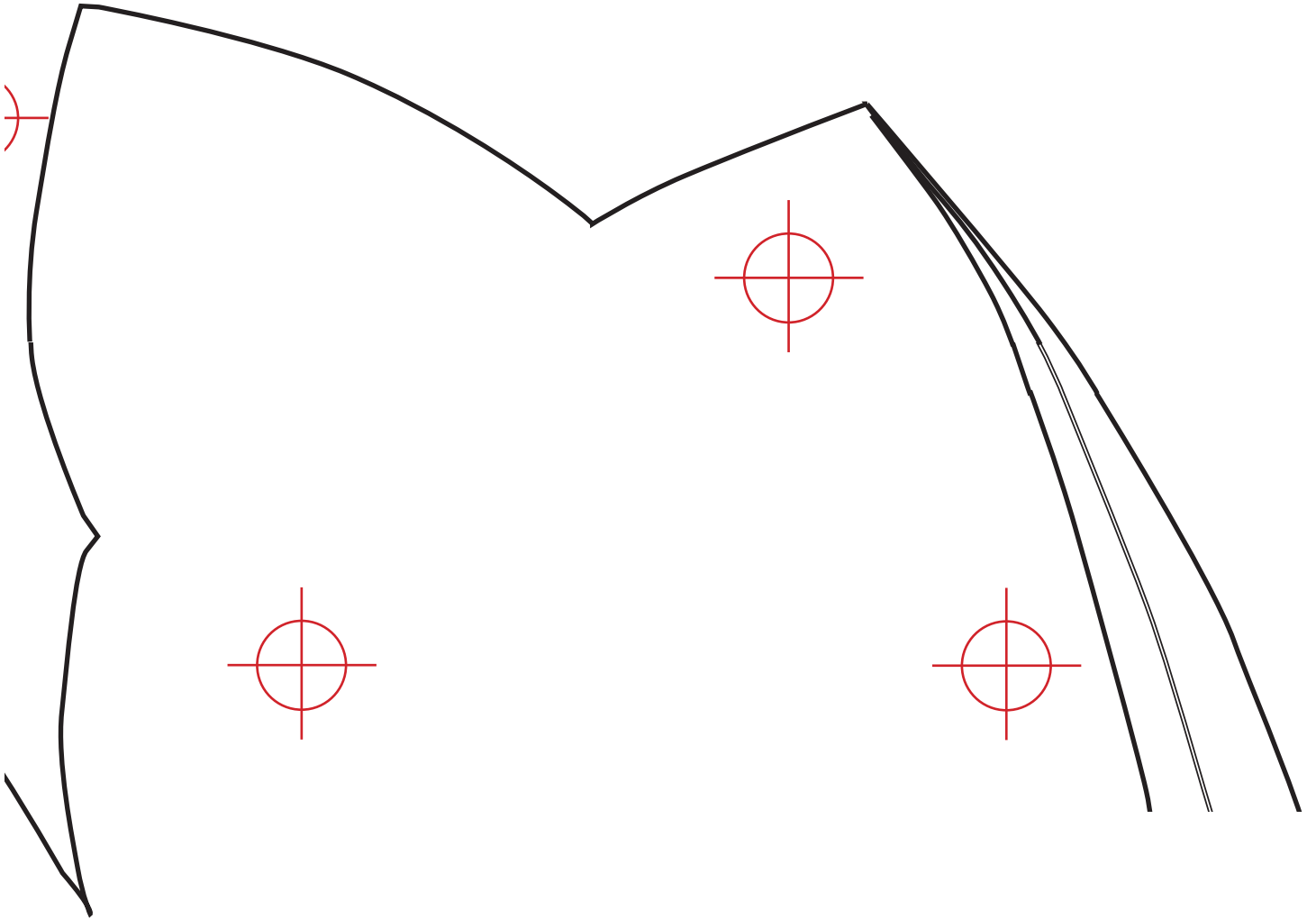
Add to Integral Ears Base



Mouse Ears

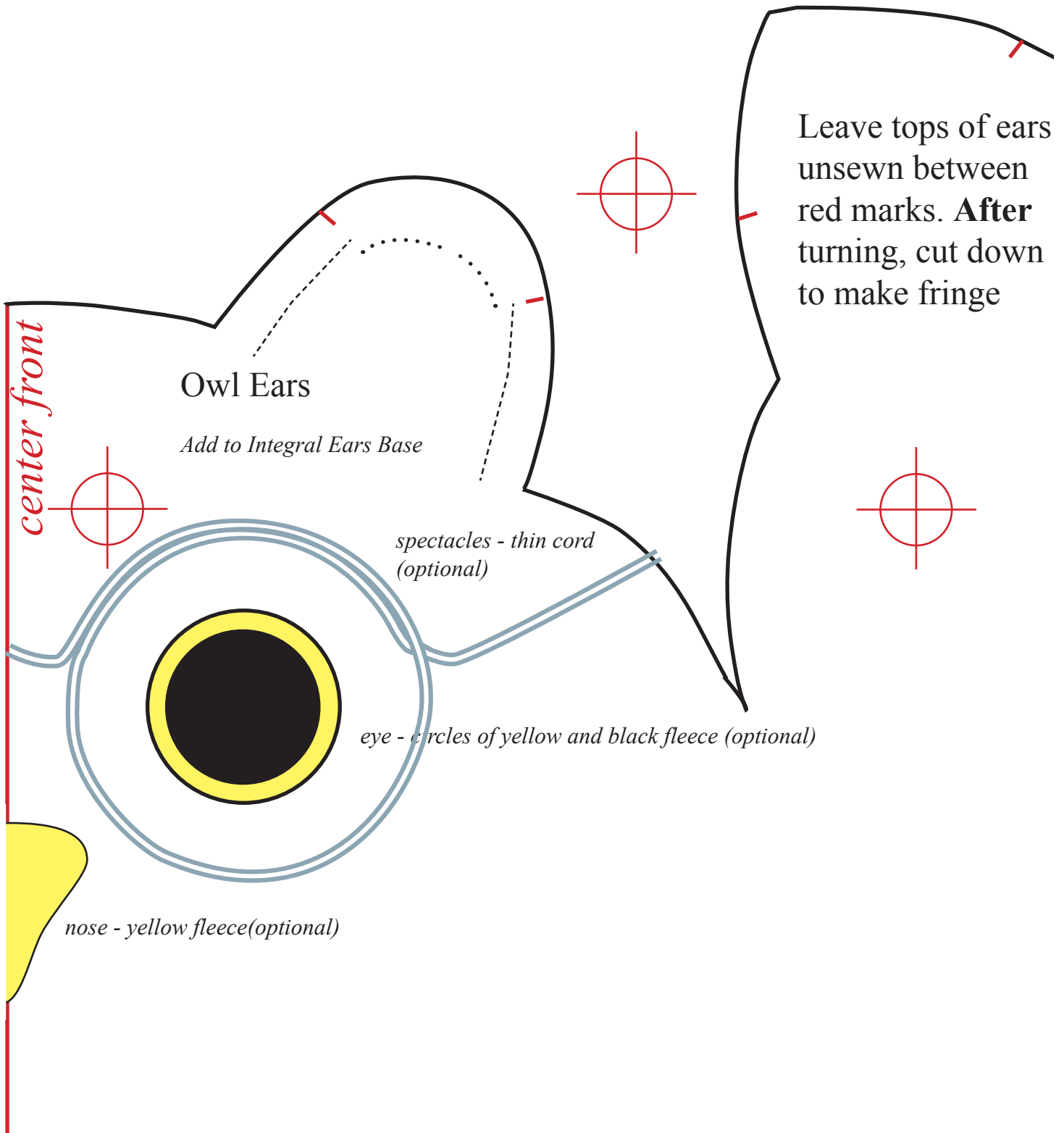
Add to Integral Ears Base

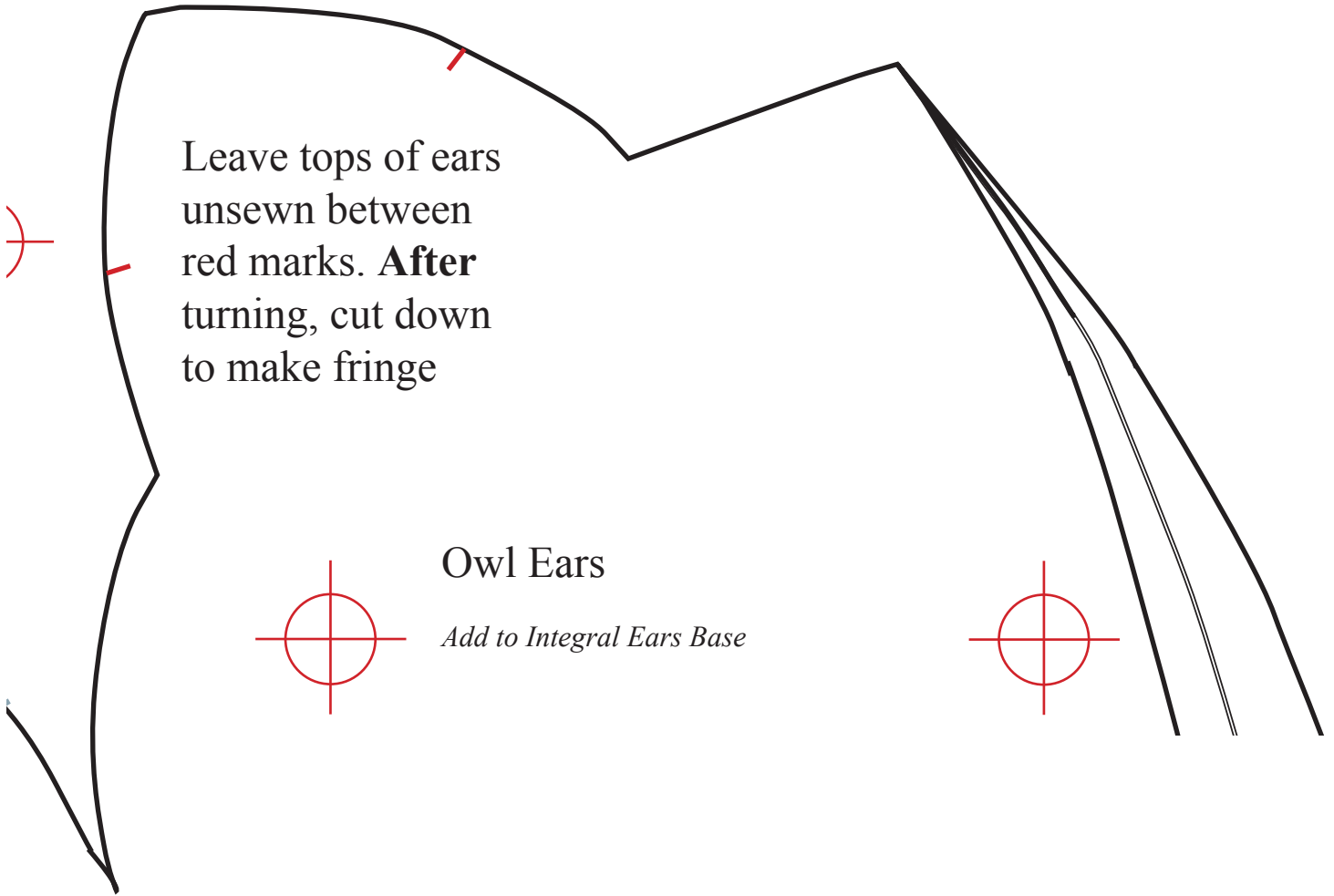




Cat Ears

Add to Integral Ears Base

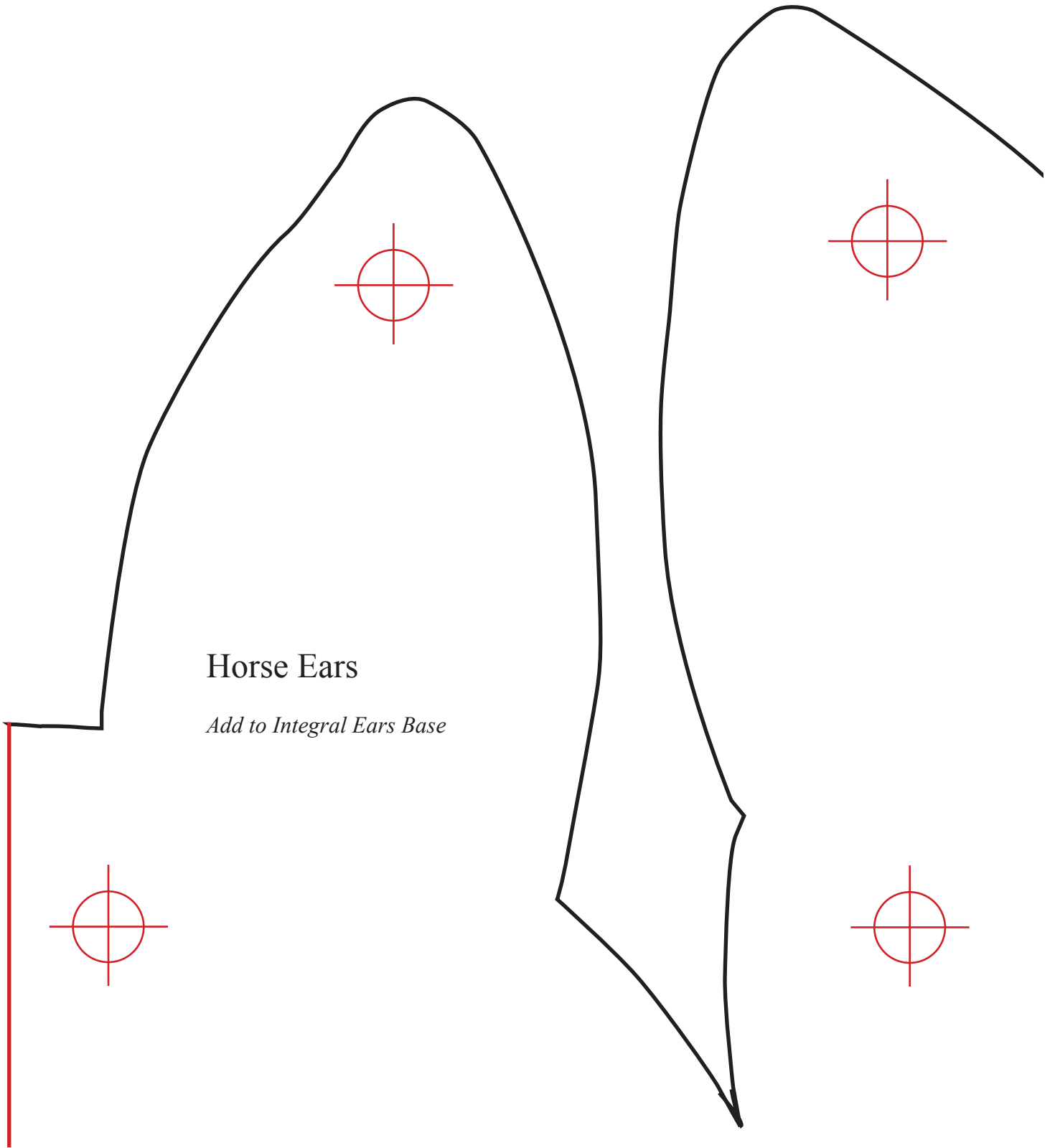




Leave tops of ears unsewn between red marks. **After** turning, cut down to make fringe

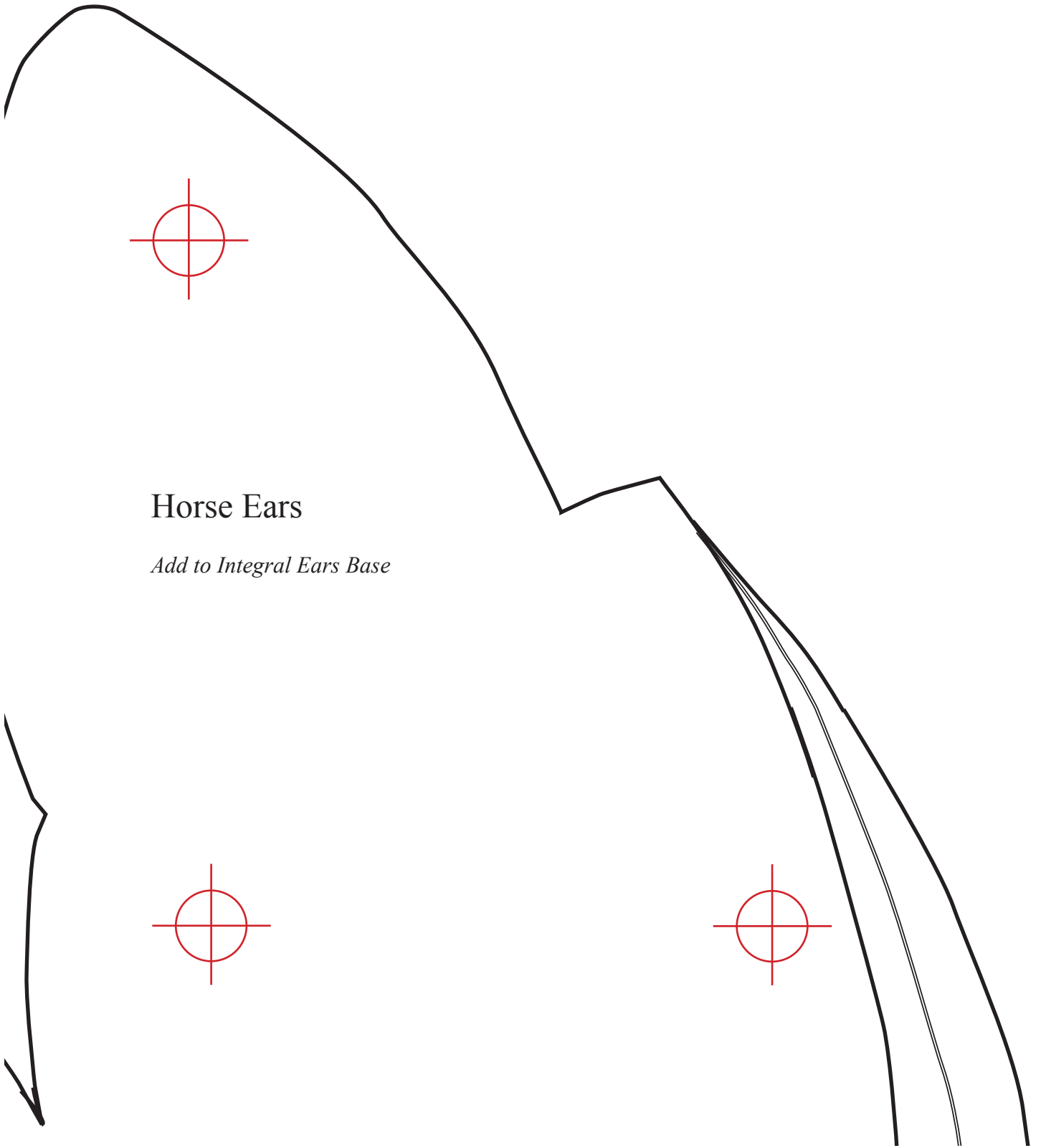
Owl Ears

Add to Integral Ears Base



Horse Ears

Add to Integral Ears Base

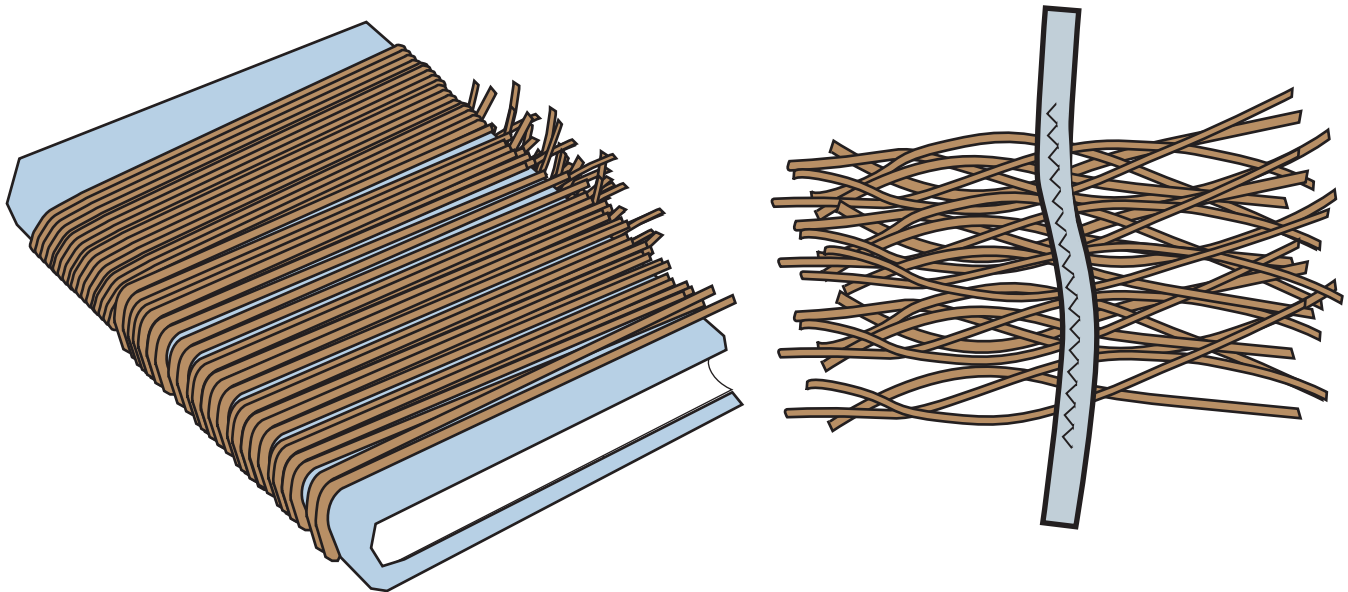


Horse Ears

Add to Integral Ears Base

How to add a Mane

A mane can be added between the ears and/or down the center back seam. Prepare the yarn before sewing the hat together.

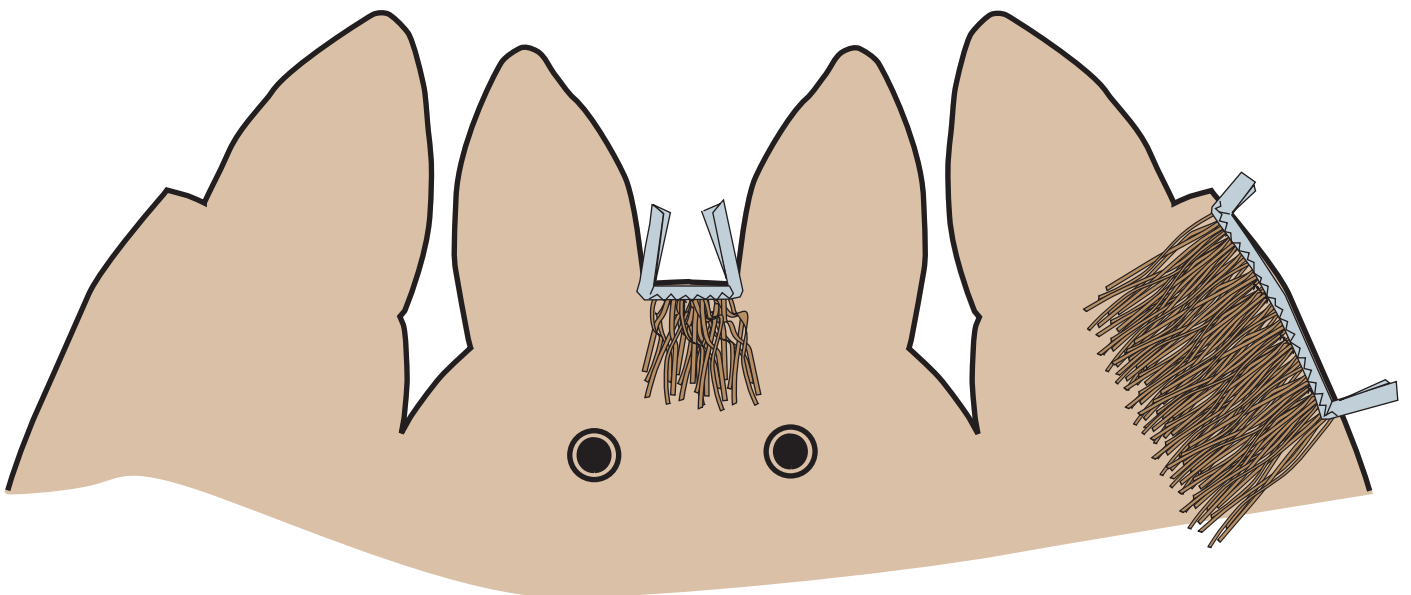


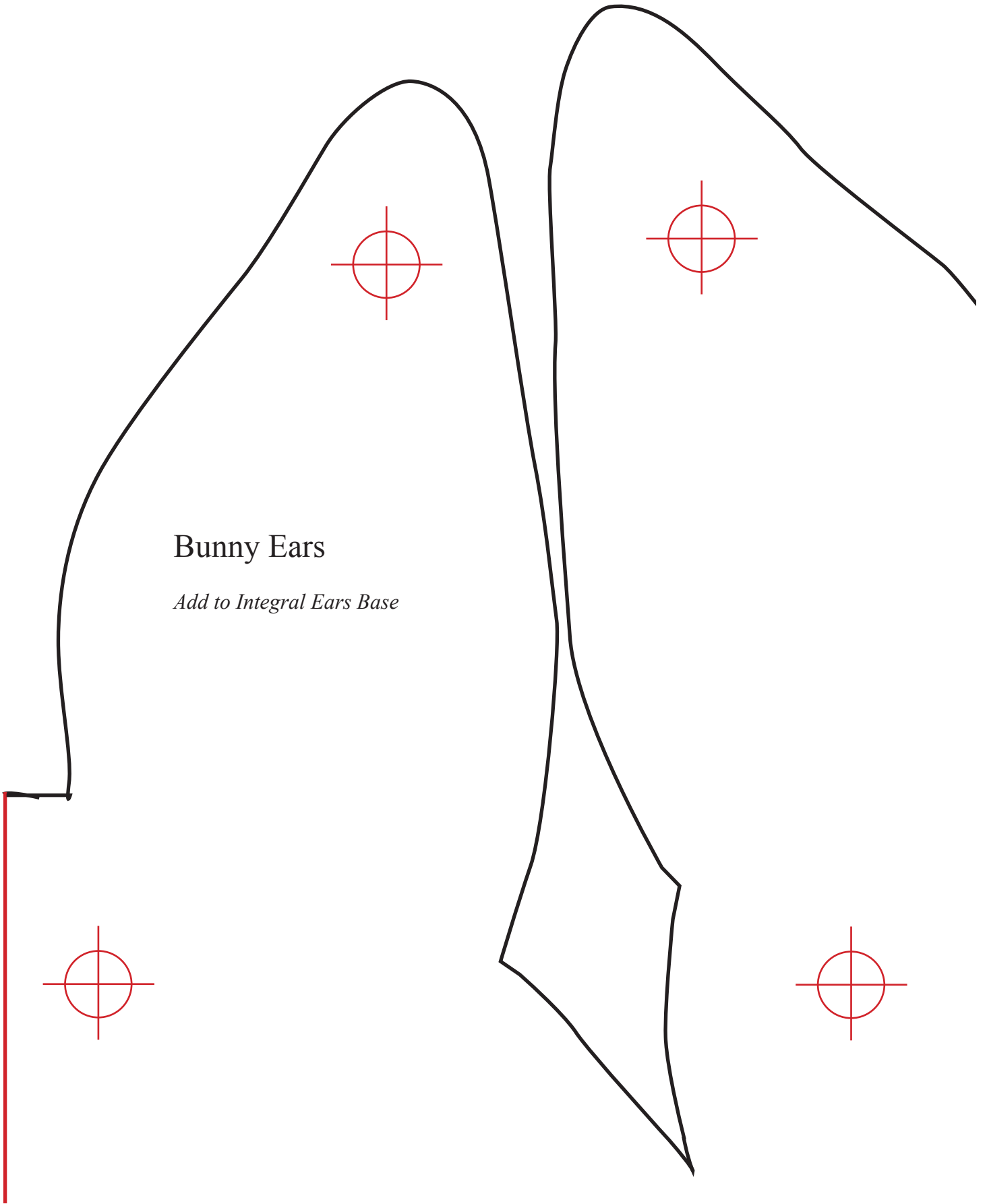
You will need scrap yarn and some kind of narrow tape or ribbon, which is sewn down the center of the pieces of yarn so that you don't go crazy handling them.

Wind as much yarn as you want around something like a book, cut it to length, put the ribbon over it and zigzag down the center of the strip. The yarn pieces will be folded back on themselves, so don't get them too dense.

Fold the tape together so that the yarn is all on one side. Baste at the edge of the fabric, folding the ends of the tape out of the way as shown below.

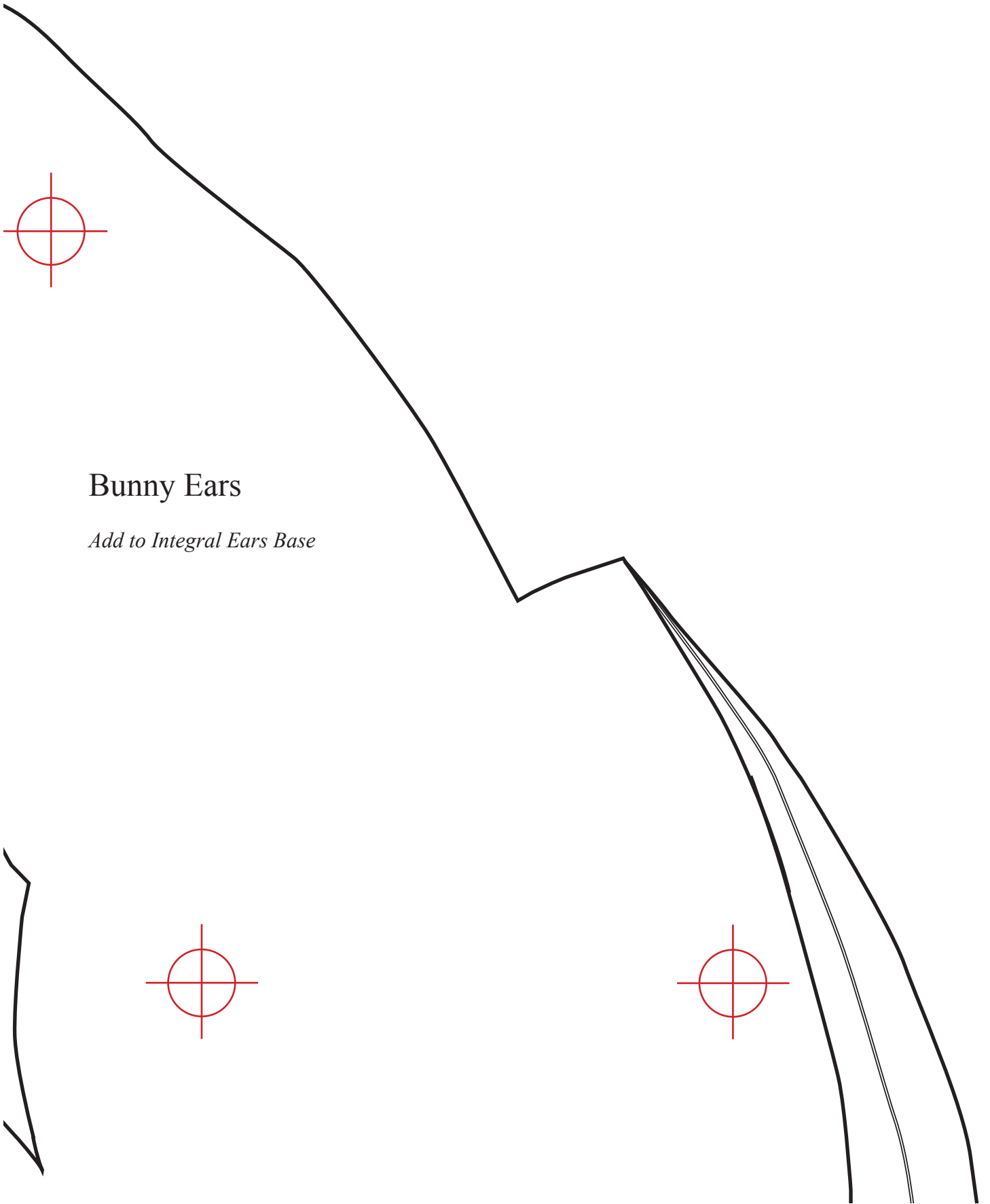
Take your time sewing over the bumpy parts, and carefully clip through all layers into the corners as shown in the instructions so that the corners will turn neatly.





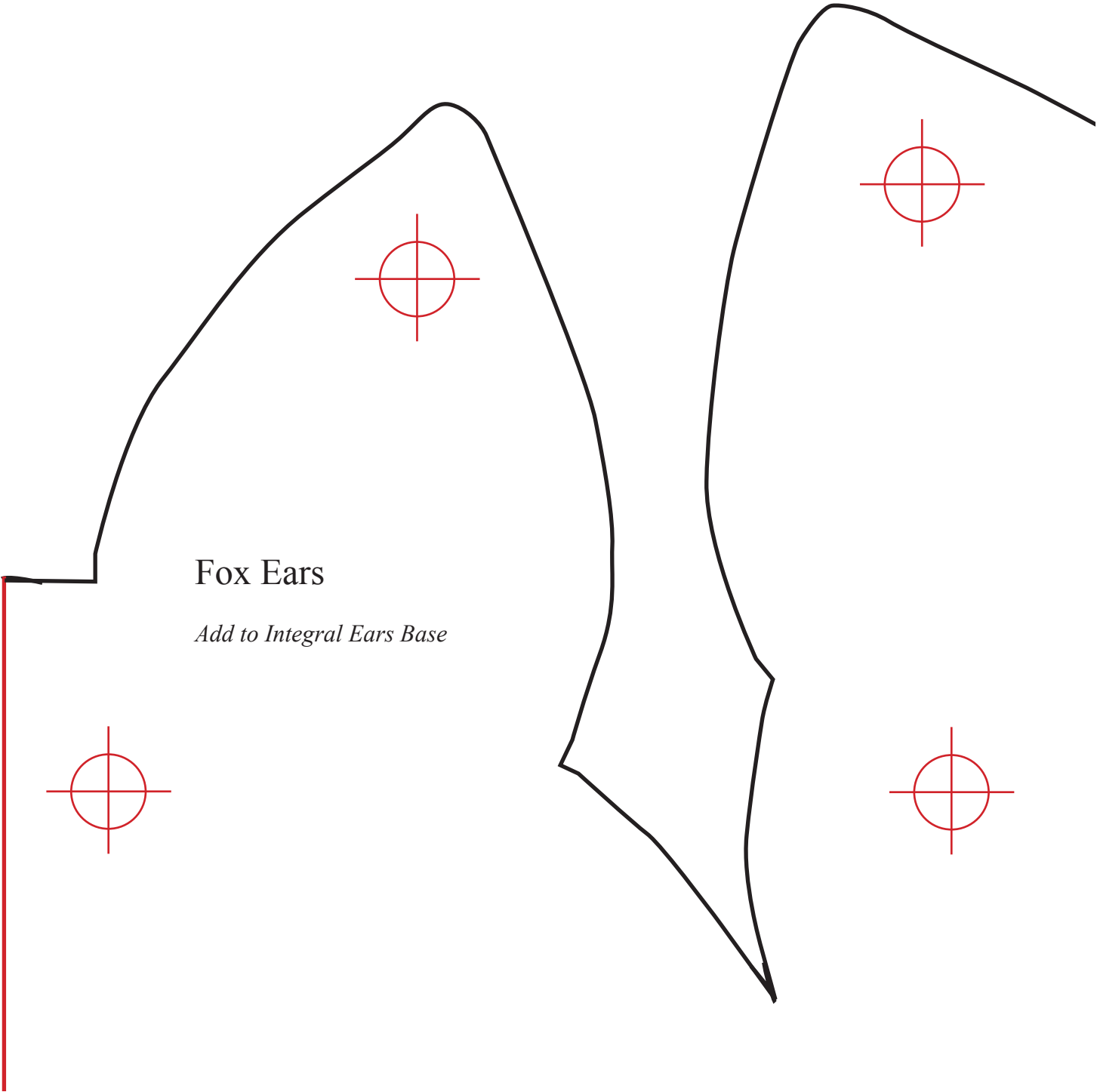
Bunny Ears

Add to Integral Ears Base



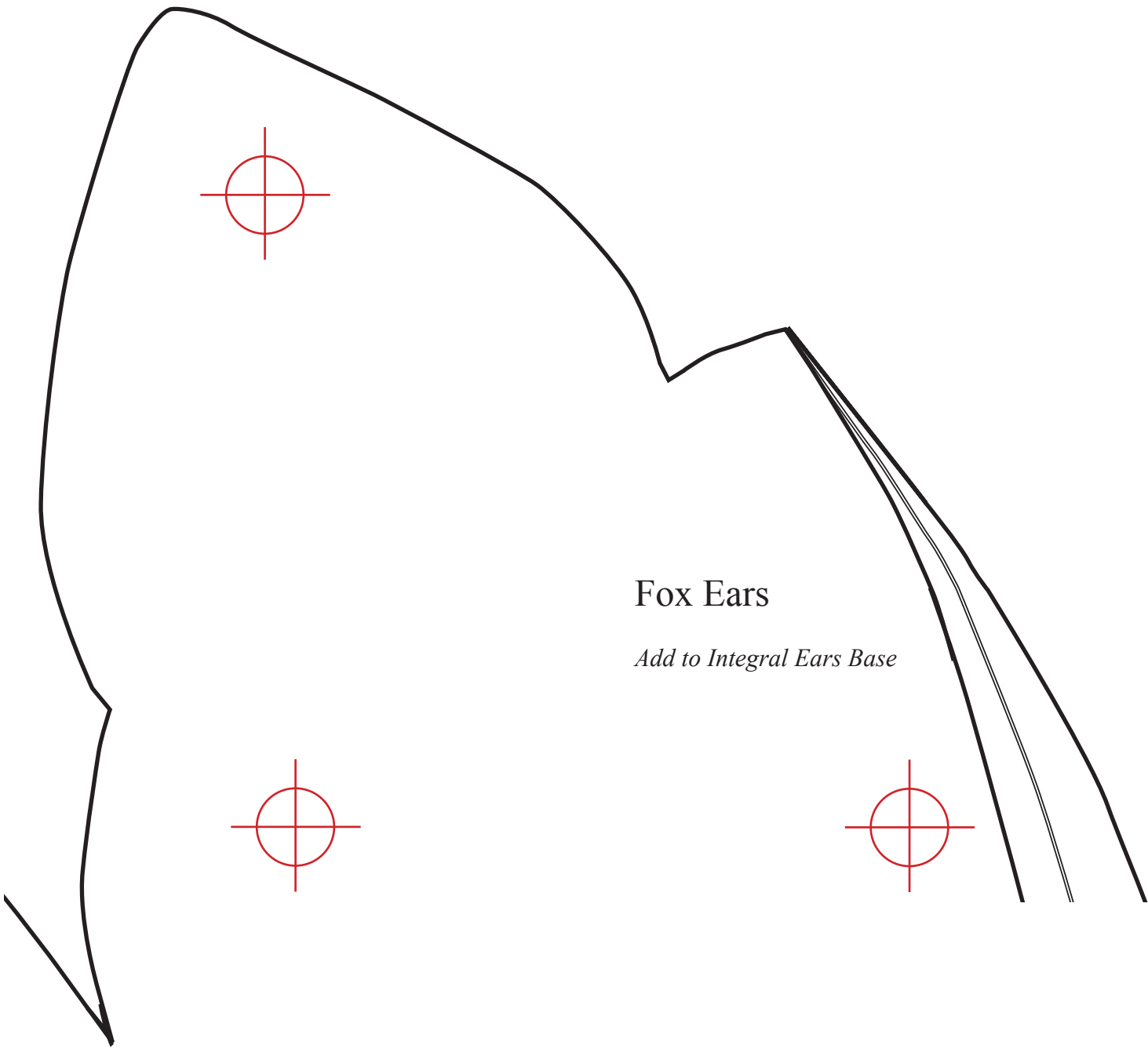
Bunny Ears

Add to Integral Ears Base



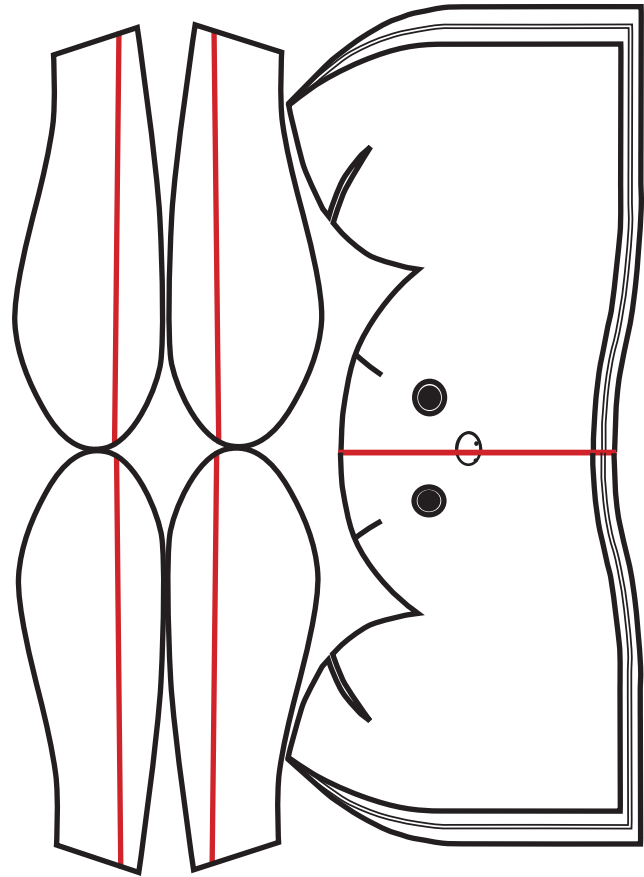
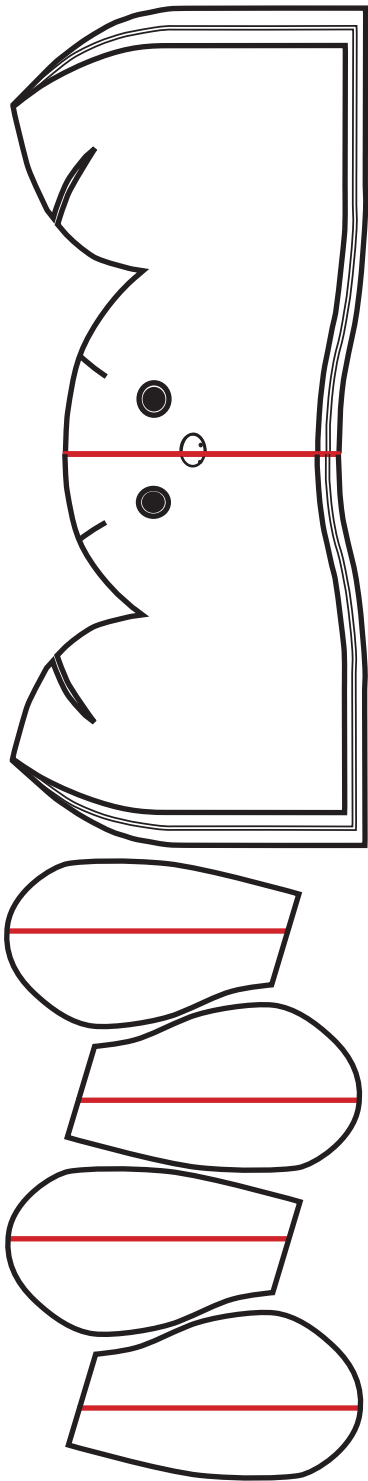
Fox Ears

Add to Integral Ears Base



Fox Ears

Add to Integral Ears Base



Possible layouts for floppy-eared hats - off the end, or above the main pattern piece.