

Fleece Hat

Side

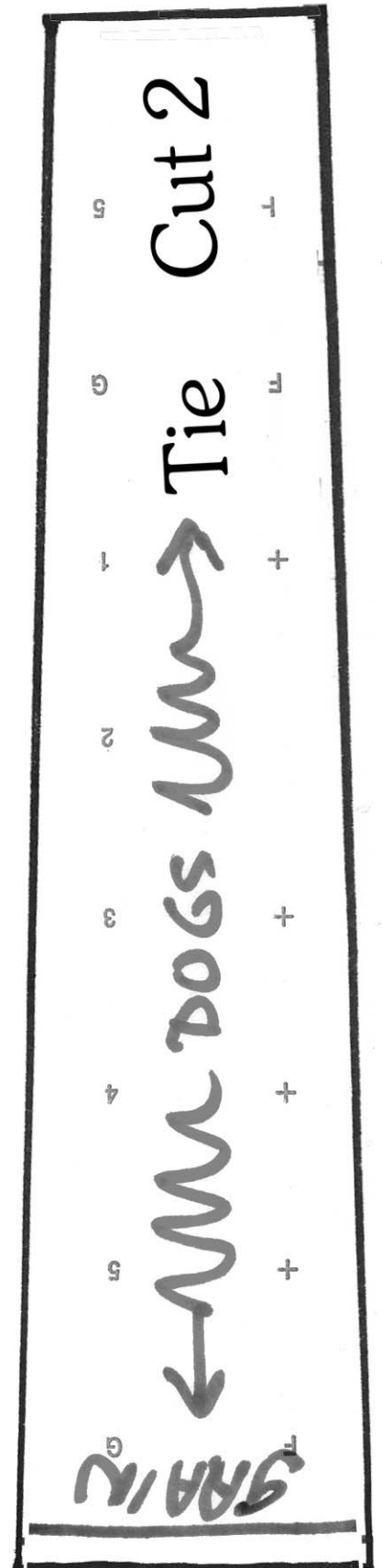
Cut 2

3/8" seams

←MM DOGS MM→

©2009

Carol Kimball



©2009 Carol Kimball

3/8" seams

Cut 1

Top (1 of 2)

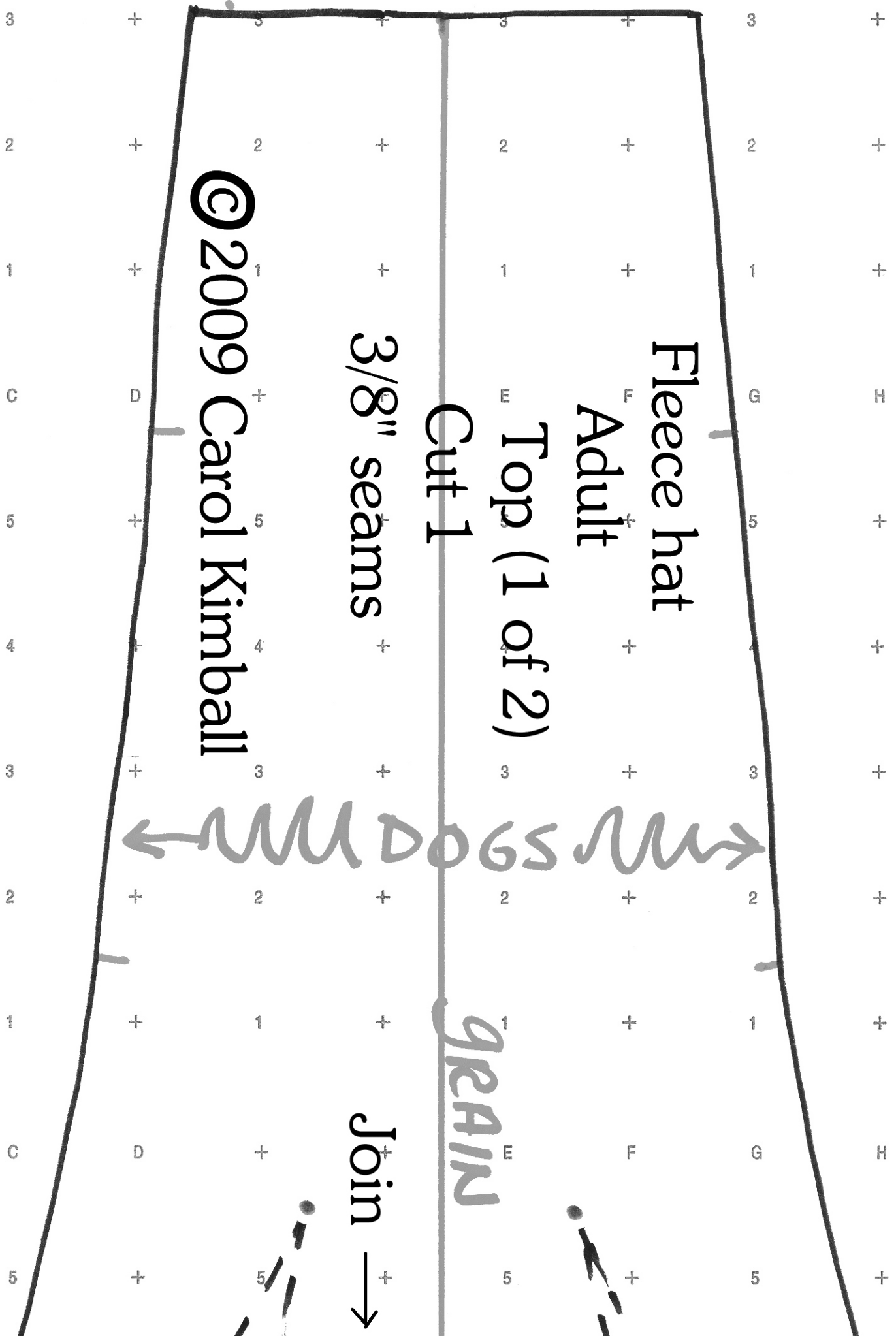
Adult

Fleece hat

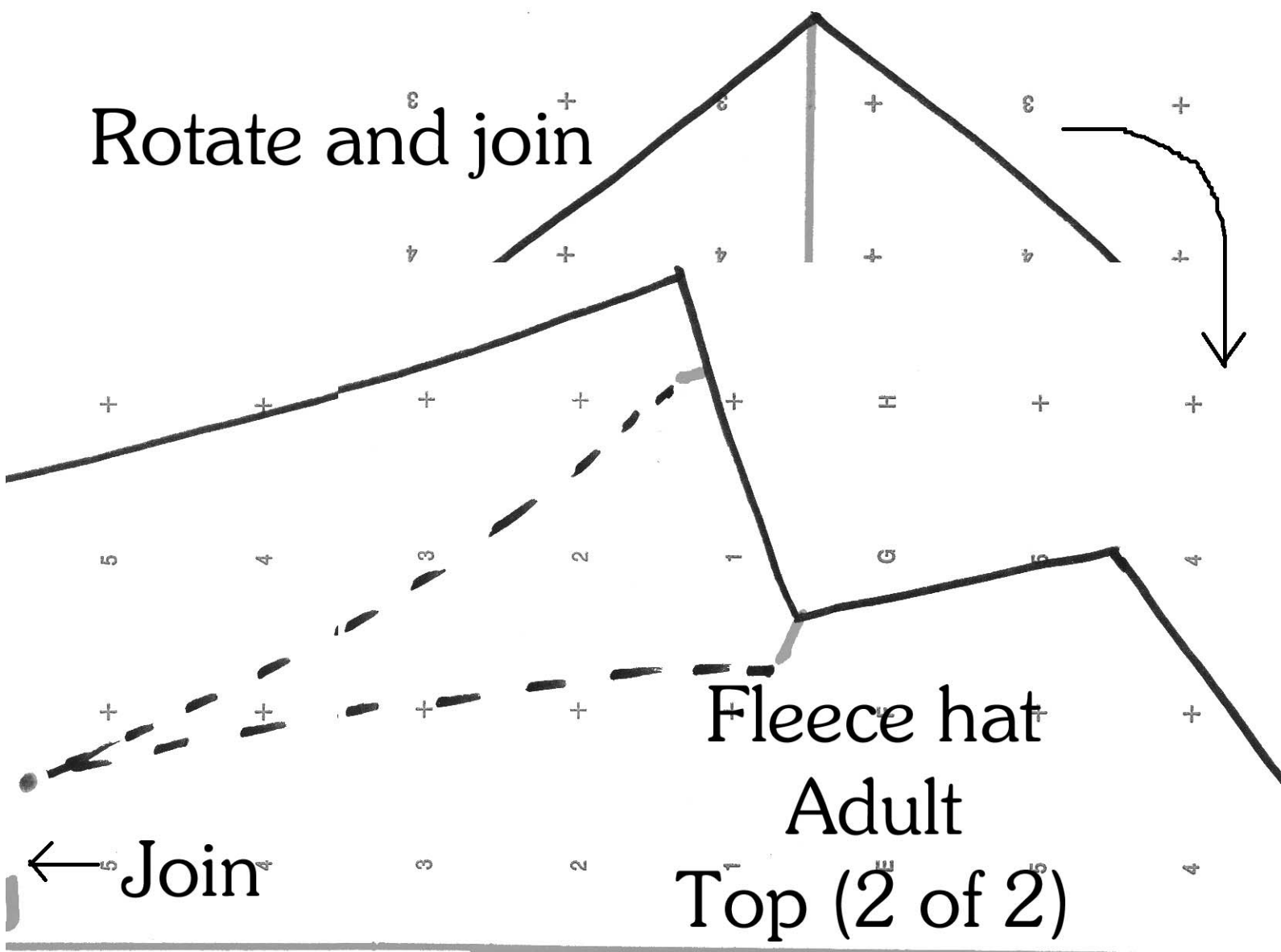
MUDOGS M

GRAIN

Join



Rotate and join



Fleece hat
Adult
Top (2 of 2)

Join

Cut 1

3/8" seams

©2009 Carol Kimball

