

“I Love You” Sign Pattern

© 2013 Carol Kimball

<http://www.carolkimball.net/>




Overview: pattern is worked in the round using knit, purl, slip stitch, twist/cabling, and smocking.


This sample, roughly 5”/12.5 cm. square, was knit of worsted on a size 4/3.5 mm circ in the round and could be used as a tube for a scarf by extending the number of back stitches, used as a motif in a sweater or hat, etc. Any weight of yarn and size of needles may be used. This chart is worked **in the round**.


The hand is stockinette on a background of seed stitch. The back of the tube is plain stockinette as it goes faster. The chart is meant to go into another piece of knitting once you know what you’re doing. This pattern will give you what’s in the photo.


 Knit


 Purl

 Slip – move stitch purlwise from left to right needle, with yarn in back.

 Twist (cable) to right, total 2 stitches
Hold one stitch to back on a cable needle. Knit the next. Move the held stitch behind to the left needle and knit it.*

 Cable to right, 2 over 1, total 3 stitches
Hold one stitch to back on a cable needle. Knit the next two. Move the held stitch behind to the left needle and knit it.*

 Cable to left, 2 over 1, total 3 stitches
Hold two stitches to front on a cable needle. Knit the next one. Move the held stitches to the left needle and knit them.*

 Smock with slipped stitches -
– slip 2 stitches (always purlwise) from left to right needle. Bring yarn forward. Slip stitches back to left and bring yarn over them and to the back, snug but not tight. Slip stitches to right needle and proceed with pattern.

I grayed-out the background as I find it easier to keep track of where I am in the chart, but this is NOT color-work.

Charts start in the **lower right-hand corner** and go **right to left**.

Cast on 48 stitches - 24 stitches for the front and 24 for the back. You can make a bigger tube by casting on more stitches. Stockinette (plain knitting) is suggested for the back of this sample because it’s fast. Use what you’d like.

Divide stitches into 12, 24, 12 and join into a circle, being careful not to twist.

This puts the start point in the middle of the back.

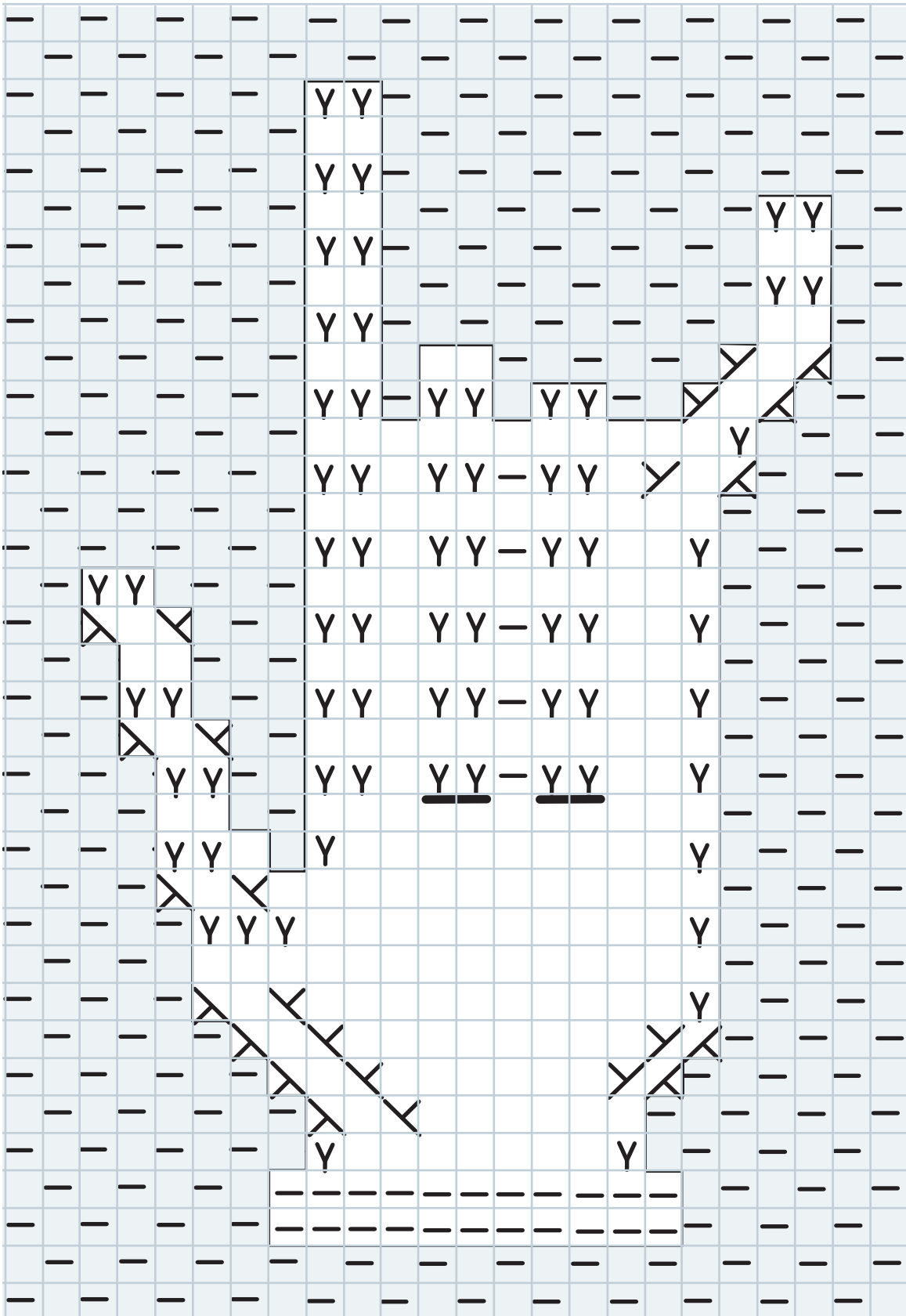
Work several rounds of garter stitch by alternately knitting and purling rows. This keeps the edge from rolling.

Work pattern as per chart, knitting across back of tube (where the join is). Markers are useful until the pattern is established.

When chart is complete, work several rows of garter and bind off.

*Or cable without an extra needle. There are many excellent videos online.

Adult hand - seed stitch background



35
34 You may use,
33 copy or pass
32 on this original
31 design as long
30 as not for profit,
29 and as long as the
28 attribution to me
27 is kept.

26 If you change it
25 and pass it on,
24 please note that
23 it's adapted from
22 my original.

21 I'd love (!) to
20 see your photos,
19 particularly if you
18 embed the motif
17 in a scarf, sweat-
16 er, hat, etc.

15 If you then wish
14 to sell your pat-
13 tern, contact me
12 for permission
11 (my policy is to
10 give it, but please
9 ask).

8 Please include
7 written permis-
6 sion if it's all
5 right to publish
4 your photos, oth-
3 erwise I will not.
2 Give me the name
1 you prefer for the
credit.